

881 高负压防爆盘管器

ATEX认证的适用于爆炸性粉尘的真空盘管器



881型高负压防爆盘管器帮助处理长而重的高负压管道，同时在不使用时提供整理和安全储存的空间。保证这些软管不会挡了叉车和车间移动设备的路。分开的悬浮支架也使安装变得更简单和安全。所有的盘管器到货的时候都是不带软管的。根据ATEX 2014/34/EU指令，881型不锈钢防爆盘管器也被批准用于22防爆区域。

Product marking: CE EX II 3D c T=40° C X

Requirement for ATEX conformity (X):


The micro-switch should be connected to an intrinsic safe circuit or be left unconnected.

适用于清理易爆粉尘
带有自动风阀
集成微动电门
Max. vacuum 45 kPa

品名	881 高负压防爆盘管器
安装	室内
适用于易爆粉尘	True
物料回收 (%)	100
连接软管长度 (米)	10
软管类型	PE/C
输送软管长度 (米)	10
连接软管, 直径 (毫米)	
最大工作压力 (Mpa)	
重量 (公斤)	26-28
Corrosion resistance	标准
Electric/Spring driven	弹簧驱动



881 高负压防爆盘管器

[image]	软管输送	颜色	输送软管直径 (毫米)	最大软管长度	产品编号
			50		30806081*
			38		30805881*
	无	Blue		10	30805981
	有	Grey	38		30811081**

*With PE/C hose

**配 PE/C 软管

软管类型	描述	温度范围, 摄氏度	管尾接头, 输送软管	管尾接头, 进气软管	盘管器, 输送软管	盘管器, 进气软管
PEC	清洗应用, 最大真空50 KPa, 电导率 10^{-6} 欧姆	-40 Deg. C. - +60 Deg. C.				

881 高负压防爆盘管器

附件		产品编号
	塑料开槽吸嘴。长度：360 mm。宽度：45 x 10 mm。	40193090*
	钢质圆形开槽吸嘴，长度：310 mm。宽度：55 x 15 mm	40193620**
	Floor cleaning equipment width 400 mm with small nylon wheels and rubber lips, d51 mm	42932000*
	Floor cleaning equipment width 500 mm with small nylon wheels 51 and rubber lips	42932100*
	延长刷，169 x 54 mm。	40190020*
	手持吸嘴，硬刷90mm, 51	43860001*
	手持吸嘴，软刷90 mm	43860200*
	Floor cleaning equipment width 600 mm with small nylon wheels and rubber lips, d51 mm	42932200*
	锯齿形吸嘴 宽130 mm, 51	43861001***
	Floor cleaning equipment width 400 mm with large rubber wheels 51 and rubber lips	42932300*
	卫生刷子，食品级	40190030*
	Floor cleaning equipment width 400 mm without wheels for wet suction, with rubber lips, d 51 mm	42932500***
	Cleaning equipment with 450 mm with rubber rim and brush	40377086*
	Floor cleaning equipment width 400 mm without wheels for dry suction 51, with brushes	42932800*
	Cleaning equipment with 370 mm with rubber rim	40377083*
	用于密闭空间的橡胶吸嘴。长度：230 mm。宽度：32-38 mm。	40193130*
	用于密闭空间的橡胶吸嘴。长度：230 mm。宽度：25 - 32 mm。	40193110*
	锥形吸嘴 长250 mm, 51	43862001****
	圆型橡胶刷，顶部可旋转	40193080*
	新微动开关重置套件	30375936
	Nozzle crevice plastic 60x15 D=40	40377194

*ATEX: 适用于可燃粉尘 (20区,21区,22区)。确保抽排设备接地。不能用于可燃气体环境和易爆物质的抽排。

**ATEX: 适合易燃粉尘 (20、21、22区) 和气体 (1、2区) 类别 IIA、IIB 和 IIC。确保抽排装置接地。不适合抽排爆炸性物料

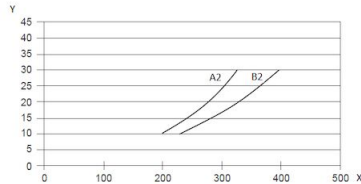
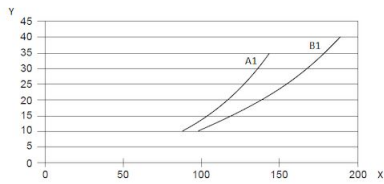
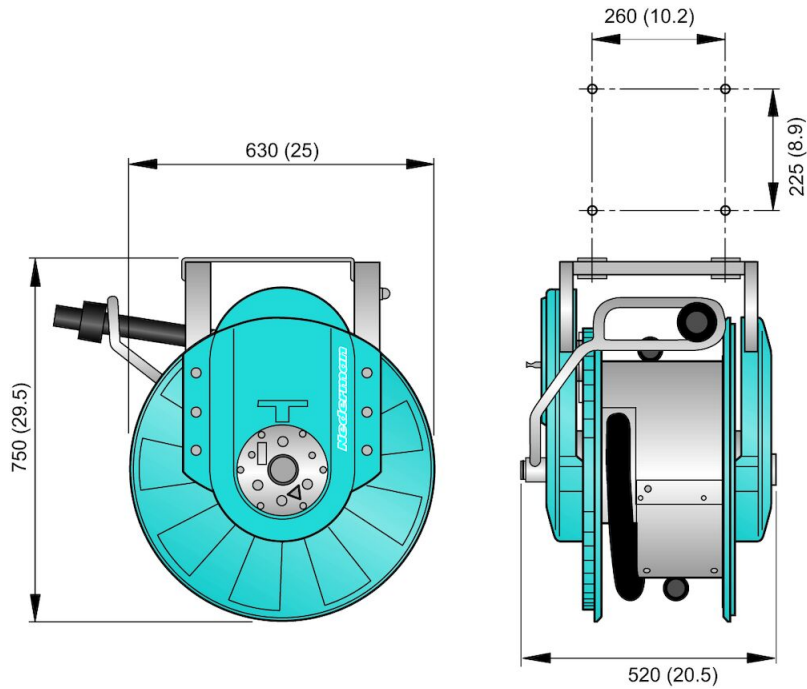
***ATEX - Suitable for combustible dust (zone 20,21,22) and gas (zone 1,2) of group IIA, IIB and IIC. Ensure earthing to extraction unit. Not to be

881 高负压防爆盘管器

used for extraction of explosive materials

****ATEX – Suitable for combustible dust (zone 20,21,22) and gas (zone 1,2) of group IIA, IIB and IIC. Ensure earthing to extraction unit. Not to be used for extraction of explosive materials.*

881 高负压防爆盘管器



Y = Pressure drop (kPa)
X = Airflow (m³/h)

- A1 = Hose 38 mm, coiled on reel
- B1 = Hose 38 mm, fully uncoiled on floor
- A2 = Hose 50 mm, coiled on reel
- B2 = Hose 50 mm, fully uncoiled on floor