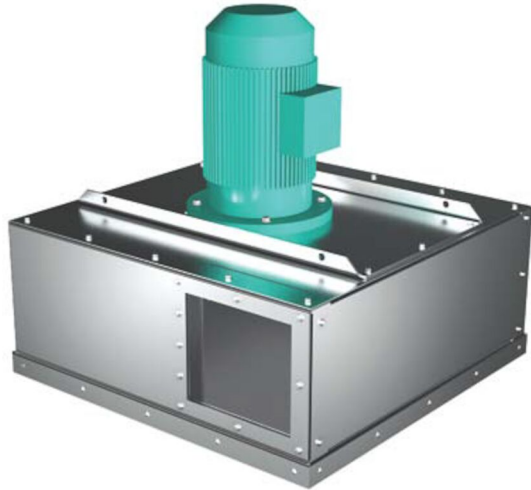


Exaustores Centrífugos FM para Filtros FM

Exaustor centrífugo de alta eficiência para linha de filtros FM.





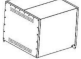
A linha de exaustores FM é projetada exclusivamente para montagem diretamente nos filtros FM. Apresentam alta eficiência e baixo nível de ruído, oferecendo sistema seguro e confiável com mínimo consumo de energia quando em cargas baixas.

Nome do Produto	Exaustores Centrífugos FM para Filtros FM
Instalação	Interior, Exterior
Material	Galv. steel, 2 mm (FM1000 = 4 mm)
Frequência (Hz)	50
Nº de fases	3

Exaustores Centrífugos FM para Filtros FM

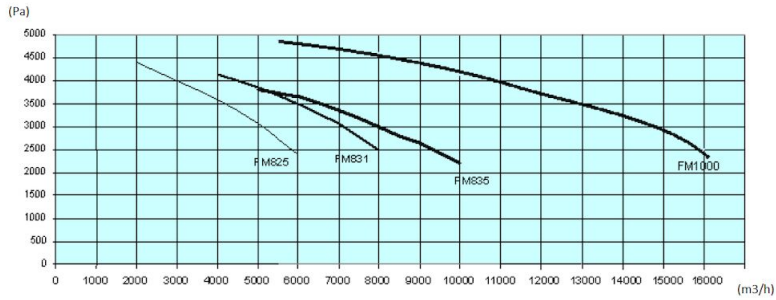
[image]	Descrição	Voltagem (V)	Noise level (dB(A))	Peso (kg)	Potência /kW	[model]
	Fan type FM620 (airflow optimum 2000 m³/h, Max 3000 m³/h)	230/400	65	74	3	5501498
	Fan type FM622 (airflow optimum 3000 m³/h, Max 4000 m³/h)	400/690	69	83	4	5501537
	Fan type FM622 (airflow optimum 3000 m³/h, Max 4000 m³/h)	230/400	69	83	4	5501538
	Fan type FM625 (airflow optimum 4000 m³/h, Max 5000 m³/h)	230/400	67	95	5,5	5501576
	Fan type FM625 (airflow optimum 4000 m³/h, Max 5000 m³/h)	400/690	67	95	5,5	5501575
	Fan type FM825 (airflow optimum 5000 m³/h, Max 6000 m³/h)	400/690	72	150	7,5	5501612
	Fan type FM831 (airflow optimum 7000 m³/h, Max 8000 m³/h)	400/690	73	166	11	5501659
	Fan type FM831 (airflow optimum 7000 m³/h, Max 8000 m³/h)	230/400	73	166	11	5501660
	Fan type FM835 (airflow optimum 9000 m³/h, Max 10000 m³/h)	400/690	74	180	15	5501699
	Fan type FM835 (airflow optimum 9000 m³/h, Max 10000 m³/h)	230/400	74	180	15	5501700
	Fan type FM1000 (airflow optimum 14000 m³/h, Max 16000 m³/h)	400/690	76	260	18,5	5501741
	Fan type FM1000 (airflow optimum 14000 m³/h, Max 16000 m³/h)	230/400	76	260	18,5	5501742

Exaustores Centrífugos FM para Filtros FM

[accessory]		[partno]
	Noise enclosure for FM800 fan	5501783
	Noise enclosure for FM800 fan	5501784
	Noise enclosure for FM1000 fan	5501799

Exaustores Centrífugos FM para Filtros FM

FM fan curve. Static pressure at filter inlet / Airflow volume.
(Includes all internal resistance except filter media)



FM fan curve. Static pressure at filter inlet / Airflow volume.
(Includes all internal resistance except filter media)

