

MJC, mini cartridge dust collector

Compact reverse jet tubular cartridge filters



MJC Mini standard version

Suitable for many different applications that generate light to medium volumes of any dust. The MJC Mini range of compact reverse jet tubular cartridge filters was developed for continuous operation in industrial process filtration and dust collection applications - incorporating Nederman's patented UniClean cartridge technology for maximum cleaning efficiency and extended life.

Key features

- Standard filter range from 4 to 40m² (43-430ft²)
- Robust weatherproof fully welded steel construction
- Space saving integral fans from 0.75 to 3.0kW (1-4hp)
- 4.0kW (5hp) higher pressure fan available
- ATEX compliant features for St1, St2 and St3 dusts
- Integral pre-separation chamber, cross flow / down flow inlet air pattern
- Modular interchangeable assemblies

Typical dust control and process applications:

- Materials handling - conveying, screening, sieving, mixing, bin/silo venting
- Shot, sand and bead blasting
- Welding and cutting processes
- Chemical, plastics and pharmaceutical powders

品名	MJC, mini cartridge dust collector
压缩空气需求	5 to 5,5 bar
安装	室内, 室外
材料	Robust construction in 2.5 mm thick steel, fully welded and painted
适用于易爆粉尘	True
清灰方式	脉冲清灰
应用	粉尘, 烟气
工作压力 (千帕)	-8,0 to 2,0
灰斗容量	75 or 150 l
过滤面积 (平方米)	4 to 40
性能 (最大风量m ³ /h)	3600
工作温度	-20 to 80 Dec. C
除尘器类型	滤筒式过滤器
技术数据声明	Open base filter without hopper and collection bin










烟气 粉尘

MJC, mini cartridge dust collector

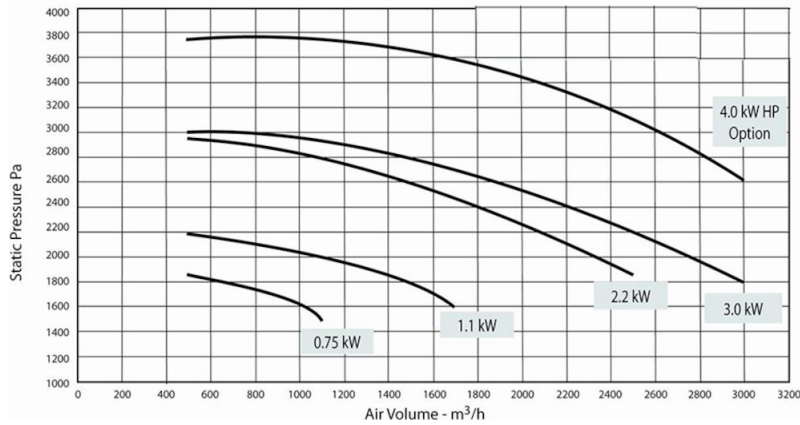
产品名称	滤芯数量	产品编号
MJC Mini 4/22/21	2	MJCMini4/22/21*
MJC Mini 8/40/21	2	MJCMini8/40/21*
MJC Mini 9/22/22	4	MJCMini9/22/22
MJC Mini 13/22/32	6	MJCMini13/22/32
MJC Mini 16/40/22	4	MJCMini16/40/22
MJC Mini 24/40/32	6	MJCMini24/40/32
MJC Mini 26/66/22	4	MJCMini26/66/22
MJC Mini 40/66/32	6	MJCMini40/66/32

*Open base filter without hopper and collection bin

MJC, mini cartridge dust collector

	附件	产品编号
	Frequency inverter with 2 kPa pressure sensor. 1,5kW	73008913
	Frequency inverter with 2kPa pressure sensor. 2,2kW	73008914
	Frequency inverter with 2kPa pressure sensor. 4kW	73008915
	Frequency inverter with 2kPa pressure sensor. 5,5kW	73008916
	Frequency inverter with 5kPa pressure sensor. 7,5kW	73008917
	Frequency inverter with 5kPa pressure sensor. 11kW	73008918
	Frequency inverter with 5kPa pressure sensor. 15kW	73008919

MJC, mini cartridge dust collector



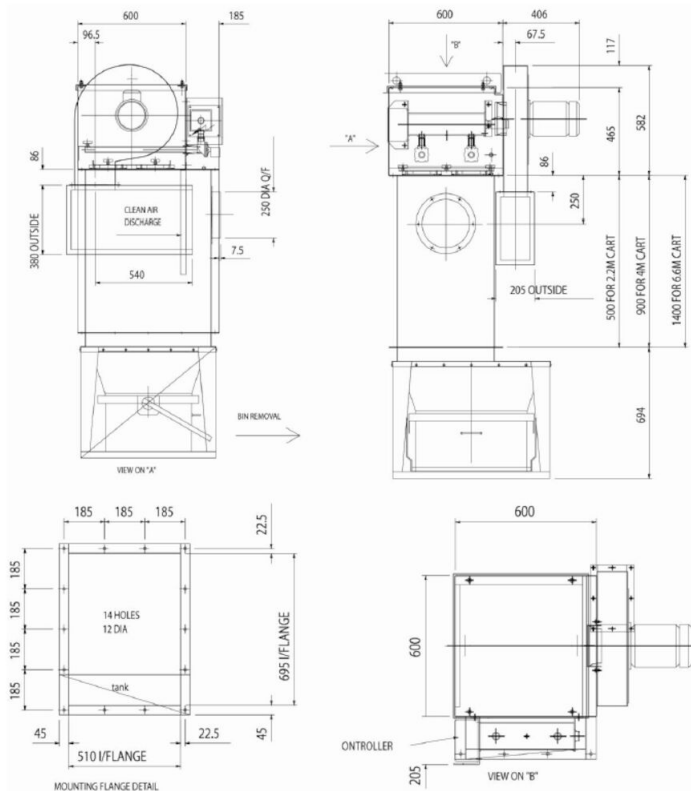
MJC Mini range fan performance, with open outlet, at running speed 2900/min.

Electrical Supply: MJC Mini 4/22/21 and 8/40/21 with no fan: -110v single phase 50 or 60Hz.

MJC Mini, all other models, with no fan: - 110 or 220v single phase 50 or 60Hz.

Fan: add 380/415v 3-phase for any fan or 220/240v single phase supply for 0.75, 1.1 or 2.2kW fan only.

MJC, mini cartridge dust collector

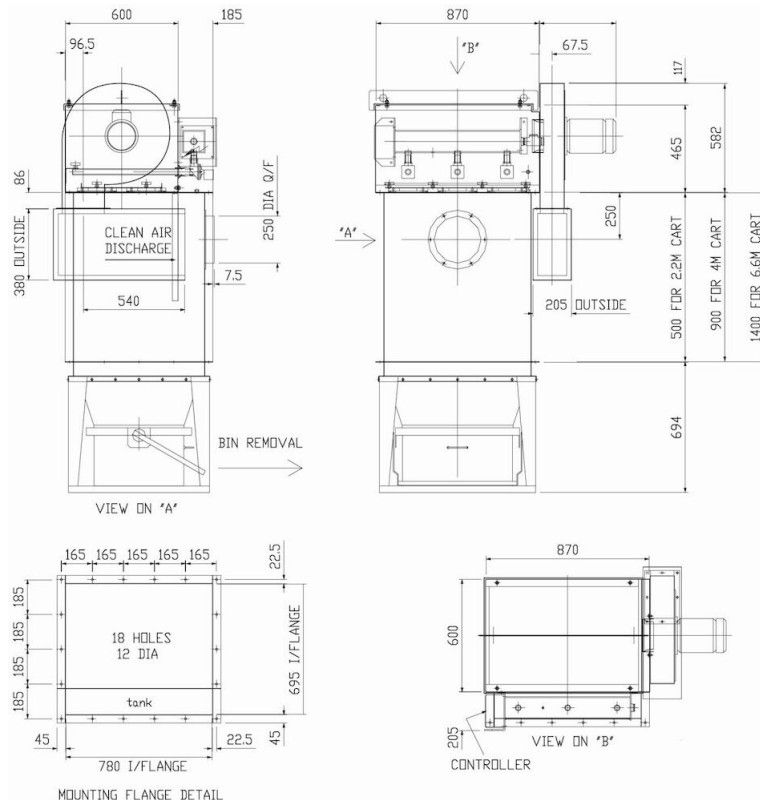


MJC Mini Planning-in Data

MJC Mini 9/22/22, 16/40/22 and 26/66/22 are available as insertable or open based venting filters, with or without fan assistance. Both units use the same mounting flange illustrated here.

A hopper with 75 litre quick-release bin is available.
 The unit can be assembled with bin removal from front or rear.
 The fan may be positioned with an upward discharge if required.

MJC, mini cartridge dust collector



MJC Mini Planning-in Data

The MJC Mini 13/22/32, 24/40/32 and 40/66/32 are available as insertable or open based venting filters, with or without fan assistance. Both units use the same mounting flange illustrated here. They may also be specified with a conventional hopper with 75 litre (illustrated) or 150 litre quick-release bin. The units may be assembled with bin removal from front or rear.

The fan may be positioned with an upward discharge if required.