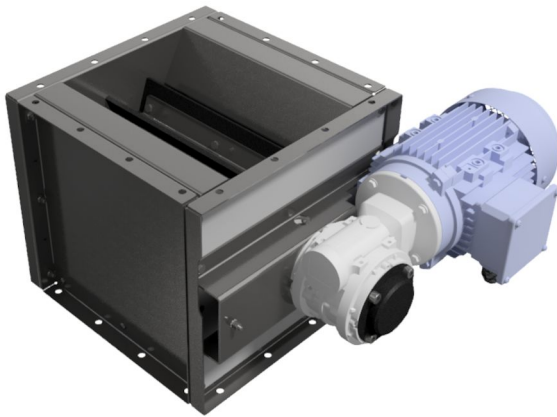


NRS 3, rotary valves

Continuous emptying of the dust collector hopper



NRS3 rotary valve

The rotary valve type NRS3 is used for continuous emptying of material from the dust collector.

The rotary valve can be used for emptying of several non-adhesive material types. Max. particle size for the NRS3 is 3 x 3 x 10 mm (.1 x .1 x .4 in.)

- **NRS3 rotary valve**

The rotary valve type NRS3 is used for continuous emptying of material from the dust collector.

The rotary valve can be used for emptying of several non-adhesive material types. Max. particle size for the NRS3 is 3 x 3 x 10 mm (.1 x .1 x .4 in.)

NRS rotary valves 10, 20 and 30

The NRS type rotary valve is used to transfer material between two separate systems. In pneumatic conveying systems discharge is usually required from the filter or cyclone to the silo, at atmospheric pressure. This is an ideal application for the NRS type rotary valve.

The rotary valve can be used for most material types, though the particle size must not exceed 13 x 13 x 13 mm (.5 x .5 x .5 in.)

Product name	NRS 3, rotary valves
Installation	[Indoor], [Outdoor]
Material	Heavy steel plate
Application	[dust]
Operating Temperature	-20 to 40 Deg. C.



Dust

NRS 3, rotary valves

Weight (kg)	Power (kW)	[model]
32	0,18	5502156
40	0,37	5505391
22	none	5502337

NRS 3, rotary valves

List of Types:

ID	A	B*	C	D	E [kW]	F**	H [kg]
5502156	NRS 3-7	Rubber ¹⁾	-	2,3 m ³ /h	0,18	-	32
5505391	NRS 3-MH		-	2,3 m ³ /h	0,37	-	40
5502337	NRS 3-0		Depends on motor ²⁾	0,32 m ³ /h per RPM ³⁾	none ⁴⁾	-	22

A) Type-Model

B) Blades Material, 1) Rubber

*) Polyurethane blades available only on request.

C) Installation zone exterior of NRSZ, 2) Depends on motor

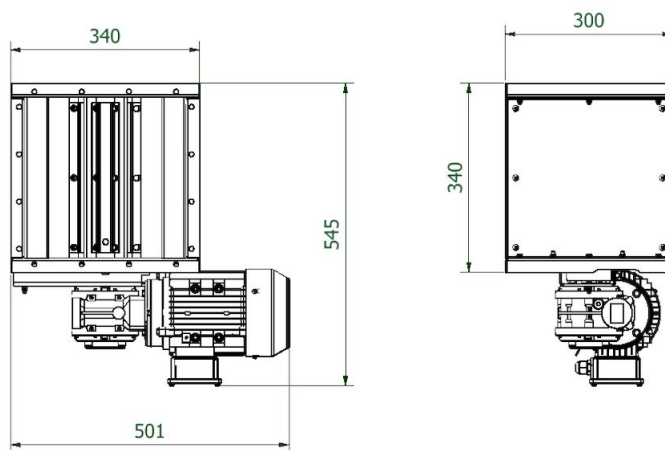
D) Capacity at 100% filling, 3) per RPM

E) Motor, 4) None

F) Motor ATEX Marking

H) Weight

Dimensions NRS 3 / NRSZ 3



Dimensions NRS 3

NRS 3, rotary valves

Dimension inlet NRS 3 / NRSZ 3

