

## Braço extrator de bancada FX2 75 CHEM

Solução de melhor custo-benefício para aplicações onde captos compactos, flexíveis e simples sejam necessários.



Os braços Nederman FX2 são fabricados em seções de alumínio anodizado leve, com dois ou três juntas de ajuste feitas em material composto. Oferecem resistência e durabilidade combinadas com fácil utilização em diversas aplicações. São especialmente indicados para aplicações onde captos compactos, flexíveis e simples são necessários.









Uma linha completa e confiável para aplicações triviais e outras onde existe risco de descargas elétricas ou substâncias corrosivas.

- Excelente eficiência e baixo nível de ruído garantem um ambiente de trabalho seguro e agradável.
- Suportes para fixação em teto, parede, pisos e bancadas, e os perfis de extensão Cut2fit garantem máxima flexibilidade de instalação.
- As justas externas permitem rotação 360° das seções do braço, garantindo total e exclusiva manobrabilidade.
- O desenho leve, suave e estético permite que os braços se adequem a qualquer ambiente sem comprometer sua durabilidade e confiabilidade.
- Produtos totalmente integrados que economizam tempo e custos, além de prover alta confiabilidade e funcionalidade.

Nome do Produto	Braço extrator de bancada FX2 75 CHEM
Nível de ruído (dB(A))	58 dB(A) at 240 m <sup>3</sup> /h
Instalação	Interior
Material	Tubes in anodized aluminium with a white electrophoretic deposition coating. Joints in PP plastic. Duct connector in EPDM rubber. Minihood in PP plastic.
Temperatura dos fumos	max 70°C
Diâmetro do braço de extração (mm)	75
Caudal (m <sup>3</sup> /h)	110 - 240
Cor	White



## Braço extrator de bancada FX2 75 CHEM

[image]	Descrição	Comprimento do braço (m)	Peso (kg)	[model]
	FX2-CHEM-D75-L1100-Up-Low	1,1	3,2	70603144*
	FX2-CHEM-D75-L1100-Up-PLUS	1,1	4,5	70603244**
	FX2-CHEM-D75-L1100-Down-Low	1,1	3,2	70603344***
	FX2-CHEM-D75-L1100-Down-Through	1,1	2,6	70603444****
	FX2-CHEM-D75-L1500-Up-Low	1,5	3,4	70603544*
	FX2-CHEM-D75-L1500-Up-PLUS	1,5	4,7	70603644**
	FX2-CHEM-D75-L1500-Down-Low	1,5	3,4	70603744***
	FX2-CHEM-D75-L1500-Down-Through	1,5	2,8	70603844****

\*Up-Low

\*\*Up-PLUS

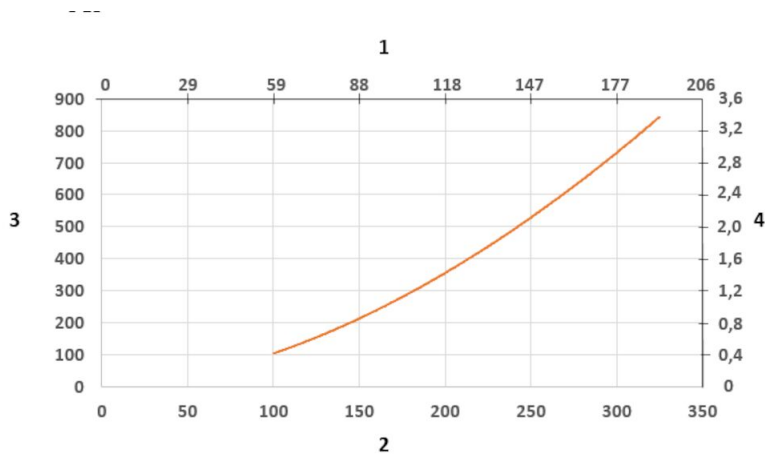
\*\*\*Down-Low

\*\*\*\*Down-Through

# Braço extrator de bancada FX2 75 CHEM

	[accessory]	[partno]
	Suporte FX-Bracket kit-D50/75/100-L190.	70501144
	Suporte FX2-Bracket kit-D50/75/100-L500	70377042
	Suporte FX2-Wall BRKT FLAT-L190-White	70377043
	Suporte FX2-Wall-P BRKT D50/75/100-L190	70377046
	Suporte de bancada FX2 D50/75/100	70501444
	Suporte FX-Classic D50/75/100	70501244
	Extensão FX-Cut2fit L1100.	70501344
	Extensão FX-Cut2fit L2200.	70374600
	Tampa FX-Ceiling cover plate	70502644
	Tampa FX-Ceiling cover plate PLUS	70377045
	Coifa FX-Combi CHEM-D50/75/100.	70500344
	Coifa FX-Dome CHEM-D50/75/100.	70376984
	Coifa FX-Metal ORIG/CHEM-D50/75/100.	70500444
	Coifa FX-Flange CHEM-D50/75/100.	70503044
	Duto FX2-Al duct-L1000-D75/100toD100-WHT.	70377054
	Duto FX2-Al duct-L2000-D75/100toD100-WHT	70377055
	FX2-Hose support ring-D75	70377067
	FX2-Hose support ring-D100	70377068

## Braço extrator de bancada FX2 75 CHEM



Pressure Drop diagram:

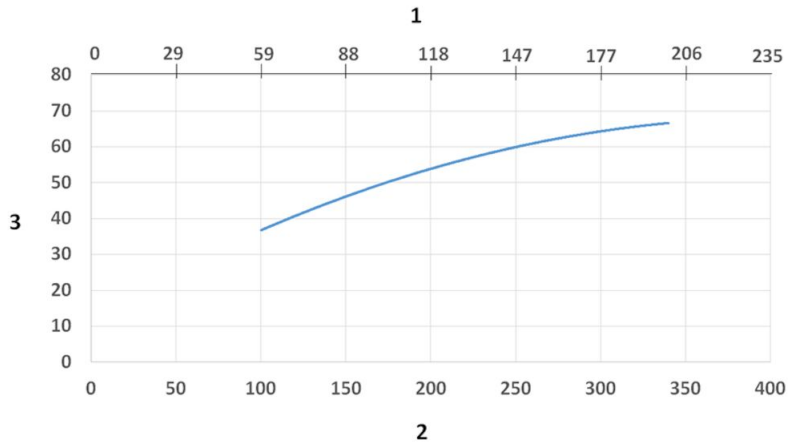
1) X- Axis: Air Flow Rate (cfm)

2) X- Axis: Air Flow Rate (m/h)

3) Y- Axis: Static Pressure Drop (Pa)

4) Y- Axis: Static Pressure Drop (in. wg.)

## Braço extrator de bancada FX2 75 CHEM



Sound Level diagram:

1) X- Axis: Air Flow Rate (cfm)

2) X- Axis: Air Flow Rate (m/h)

3) Y- Axis: Sound Pressure Level (dB) (A)

## Braço extrator de bancada FX2 75 CHEM



**Material:**

1) Flange: PP

2) Tubes: Aluminum: anodized 10 µm, with white electrophoretic deposition coating

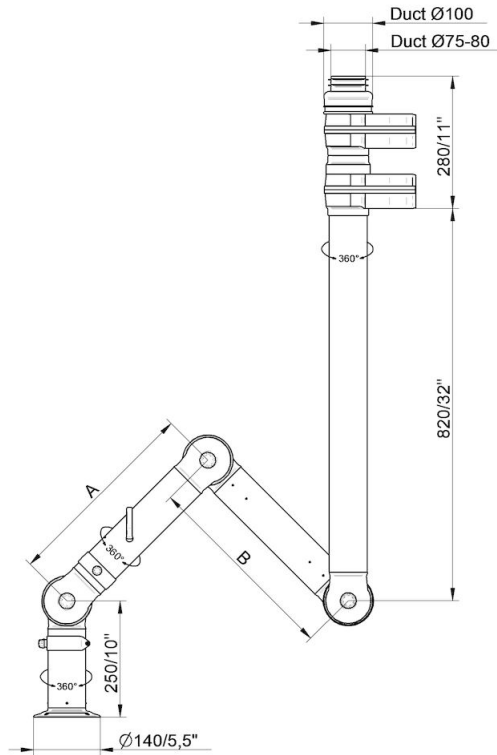
3) Damper adjustment handle: Aluminum: anodized 10 µm  
Internal spring: Stainless steel  
Damper blade: Conductive TP & PP plastic

4) Joints: PP with glass fibre reinforcement  
Plastic rings: PP with glass fibre reinforcement  
Axial locking rings: PP with glass fibre reinforcement  
Adjustment knobs: PA & EDS plastic  
Threaded shaft inside joints: Stainless Steel

5) Duct connector: EPDM Rubber

6) Swivel: Aluminum, powder coating  
Rivets: Aluminum  
Bearings swivel: PP with glass fibre reinforcement

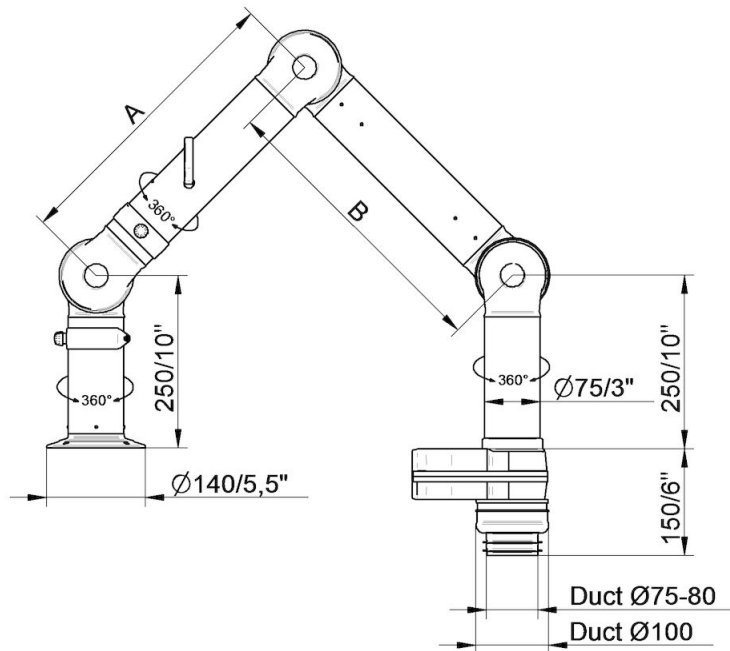
## Braço extrator de bancada FX2 75 CHEM



- FX2-CHEM-D75-L1100-Up-PLUS  
Part number: 70603244  
Max. working radius: 1090 mm (42,9 in)  
A: 420 mm (16,5 in)  
B: 420 mm (16,5 in)

- FX2-CHEM-D75-L1500-Up-PLUS  
Part number: 70603644  
Max. working radius: 1450 mm (57,1 in)  
A: 500 mm (19,7 in)  
B: 700 mm (27,5 in)

## Braço extrator de bancada FX2 75 CHEM

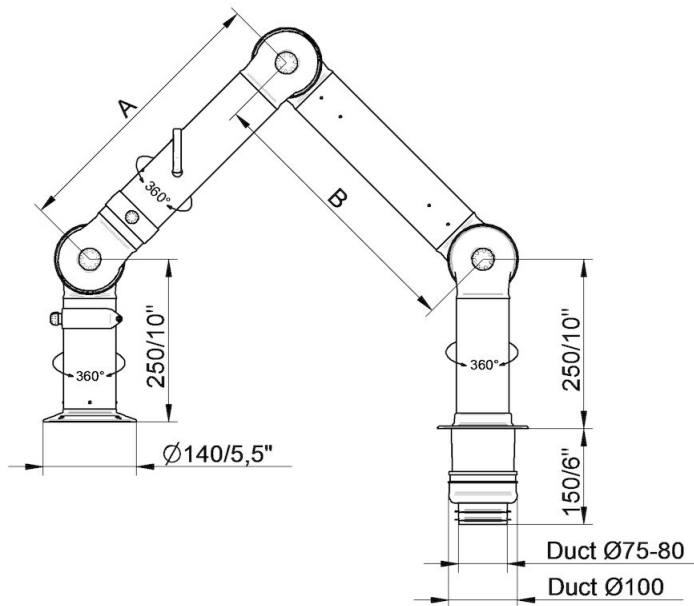


- FX2-CHEM-D75-L1100-Down-Low  
Part number: 70603344  
Max. working radius: 1090 mm (42,9 in)  
A: 420 mm (16,5 in)  
B: 420 mm (16,5 in)

- FX2-CHEM-D75-L1500-Down-Low  
Part number: 70603744  
Max. working radius: 1450 mm (57,1 in)  
A: 500 mm (19,7 in)  
B: 700 mm (27,5 in)



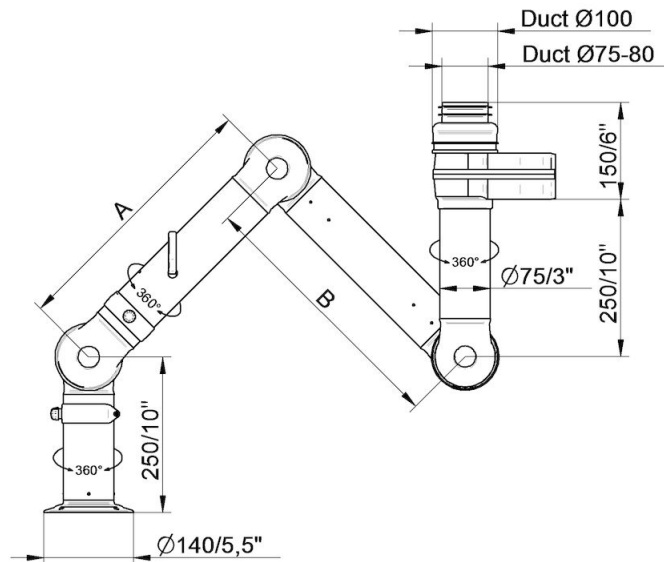
## Braço extrator de bancada FX2 75 CHEM



- FX2-CHEM-D75-L1100-Down-Through  
Part number: 70603444  
Max. working radius: 1090 mm (42,9 in)  
A: 420 mm (16,5 in)  
B: 420 mm (16,5 in)

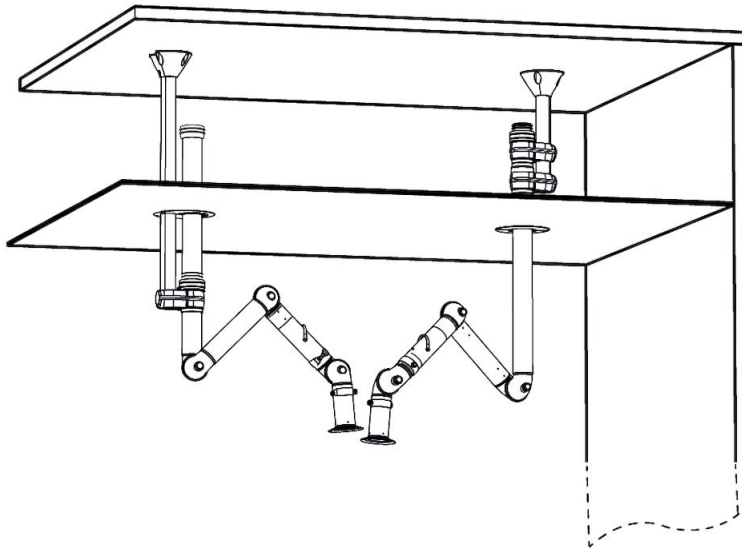
- FX2-CHEM-D75-L1500-Down-Through  
Part number: 70603844  
Max. working radius: 1450 mm (57,1 in)  
A: 500 mm (19,7 in)  
B: 700 mm (27,5 in)

## Braço extrator de bancada FX2 75 CHEM



- FX2-CHEM-D75-L1100-Up-Low  
Part number: 70603144  
Max. working radius: 1090 mm (42,9 in)  
A: 420 mm (16,5 in)  
B: 420 mm (16,5 in)
  
- FX2-CHEM-D75-L1500-Up-Low  
Part number: 70603544  
Max. working radius: 1450 mm (57,1 in)  
A: 500 mm (19,7 in)  
B: 700 mm (27,5 in)

## Braço extrator de bancada FX2 75 CHEM



Ceiling mounting example:

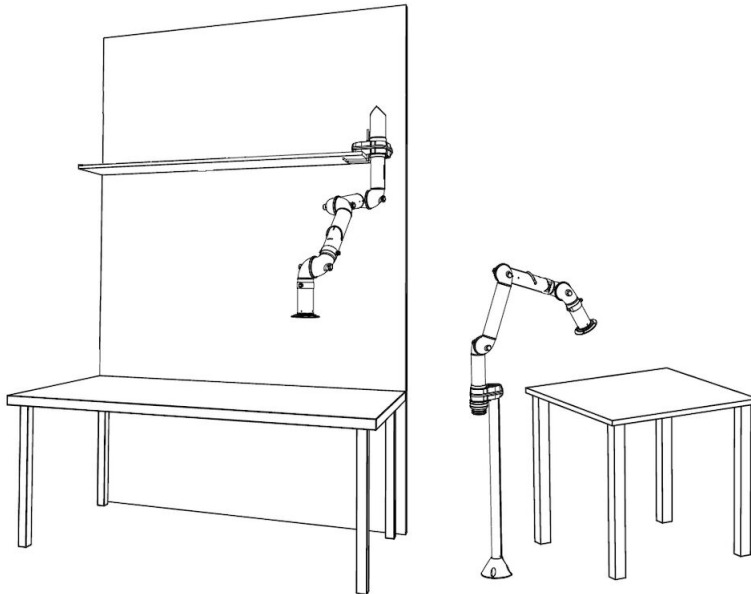
Left: FX2-Up-Low arm with following accessories:

- FX-Classic bracket
- FX-Cut2fit extension-L1100
- FX2-Alu duct-WHT
- FX2-Duct connector-ORIG/CHEM-D100
- FX-Ceiling cover plate

Right: FX2-Up-PLUS arm with following accessories:

- FX2-Bracket kit-D50/75/100-L500
- FX2-Ceiling cover plate-PLUS

## Braço extrator de bancada FX2 75 CHEM



Other mounting examples:

Left: Shelf mounting with FX2-Up-Low arm and following accessories:

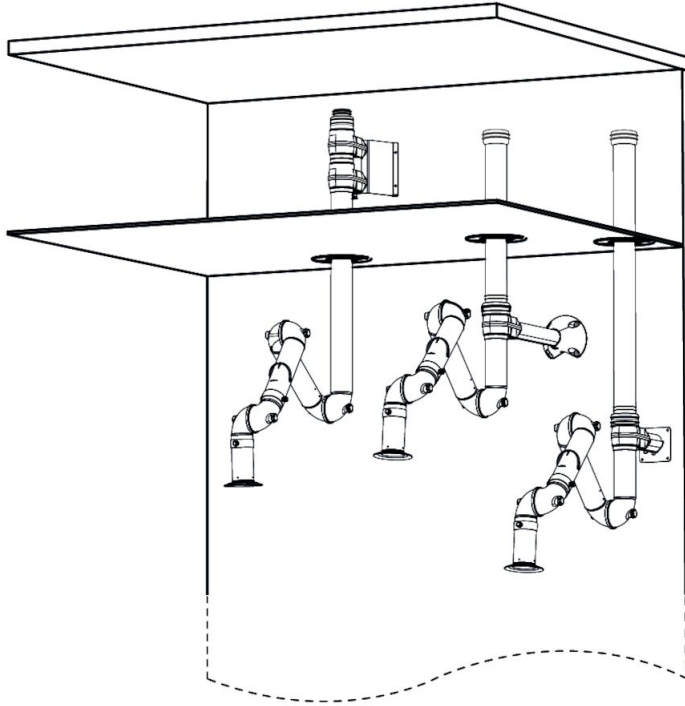
-FX2-Bench bracket kit

Right: Floor mounting with FX2-Up-Low arm and following accessories:

-FX-Classic bracket

-FX-Cut2fit extension-L1100

## Braço extrator de bancada FX2 75 CHEM



Wall mounting examples:

Left: FX2-Up-PLUS arm with following accessories:

- FX2-Wall-P BRKT kit-D50/75/100-L190
- FX2-Ceiling cover plate-PLUS

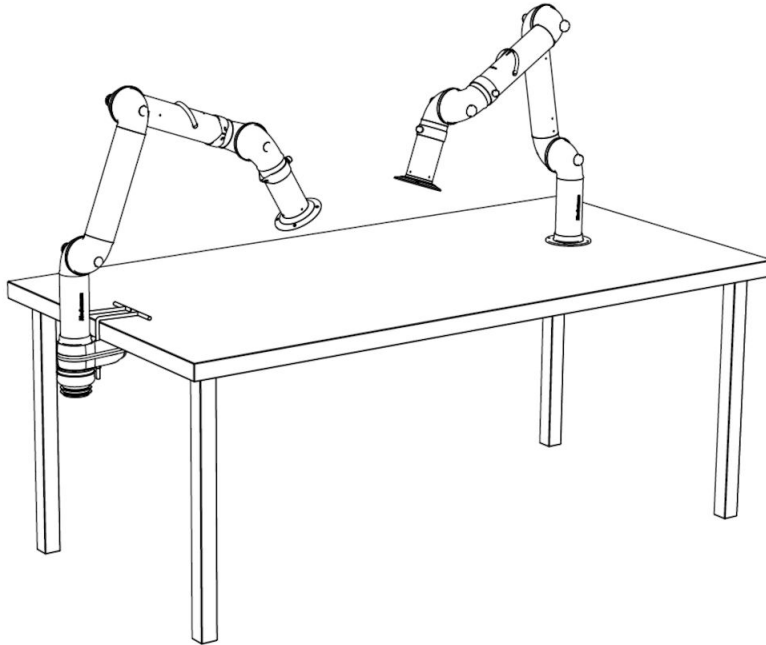
Middle: FX2-Up-Low arm with following accessories:

- FX2-Bracket kit-D50/75/100-L500
- FX2-Ceiling cover plate-PLUS
- FX2-Alu duct-WHT
- FX2-Duct connector-ORIG/CHEM-D100

Right: FX2-Up-Low arm with following accessories:

- FX2-Wall BRKT kit-Flat-L190-White
- FX2-Ceiling cover plate-PLUS
- FX2-Alu duct-WHT
- FX2-Duct connector-ORIG/CHEM-D100

## Braço extrator de bancada FX2 75 CHEM



Bench mounting examples:

Left: FX2-Down-Low arm with following accessories:

-FX2-Bench bracket kit-D50/75/100

Right: FX2-Down-Through arm