

## Braço extrator de bancada FX2 50 ESD/EX

Solução de melhor custo-benefício para aplicações onde captos compactos, flexíveis e simples sejam necessários.











Os braços Nederman FX2 são feitos de seções leves de alumínio anodizado, com duas ou três juntas ajustáveis de fricção. Oferecendo resistência e durabilidade combinadas com fácil manuseio, elas podem ser usadas em muitos tipos de ambiente. Eles são especialmente adequados para aplicações em que são necessários braços pequenos, flexíveis e fáceis de usar. O braço é projetado para uso em ambientes eletrônicos, onde existe o risco de descargas eletrostáticas. O ESD / EX também pode ser usado para certas aplicações em atmosferas potencialmente explosivas. Recomendado para uso nas zonas 1, 2 e 21, 22.

- Excelente eficiência e baixo nível de ruído garantem um ambiente de trabalho seguro e agradável.
- Suportes para fixação em teto, parede, pisos e bancadas, e os perfis de extensão Cut2fit garantem máxima flexibilidade de instalação.
- As justas externas permitem rotação 360° das seções do braço, garantindo total e exclusiva manobrabilidade.
- O desenho leve, suave e estético permite que os braços se adequem a qualquer ambiente sem comprometer sua durabilidade e confiabilidade.
- Produtos totalmente integrados que economizam tempo e custos, além de prover alta confiabilidade e funcionalidade.

Nome do Produto	Braço extrator de bancada FX2 50 ESD/EX
Nível de ruído (dB(A))	60 dB(A) at 110 m <sup>3</sup> /h
Instalação	Interior
Material	Tubes in anodized aluminium. Joints in conductive PP plastic. Duct connector in conductive EPDM rubber. Minihood in conductive PP plastic.
Temperatura dos fumos	max 70°C
Diâmetro do braço de extração (mm)	50
Caudal (m <sup>3</sup> /h)	50 - 110
Cor	Aluminum and black



## Braço extrator de bancada FX2 50 ESD/EX

[image]	Descrição	Comprimento do braço (m)	Peso (kg)	[model]
	FX2-ESD/EX-D50-L700-Up/Down-Low	0,7	1,7	70601244*
	FX2-ESD/EX-D50-L700-Up/Down-Through	0,7	1,2	70601444**
	FX2-ESD/EX-D50-L1100-Up-Low	1,1	2,3	70601544***
	FX2-ESD/EX-D50-L1100-Down-Low	1,1	2,3	70601744****
	FX2-ESD/EX-D50-L1100-Down-Through	1,1	1,8	70601844*****
	FX2-ESD/EX-D50-L1500-Up-Low	1,5	2,6	70601944*****
	FX2-ESD/EX-D50-L1500-Down-Low	1,5	2,6	70602144****
	FX2-ESD/EX-D50-L1500-Down-Through	1,5	2,1	70602244*****

\*Up/Down-Low

\*\*Up/Down-Through


\*\*\*up-Low

\*\*\*\*Down-Low

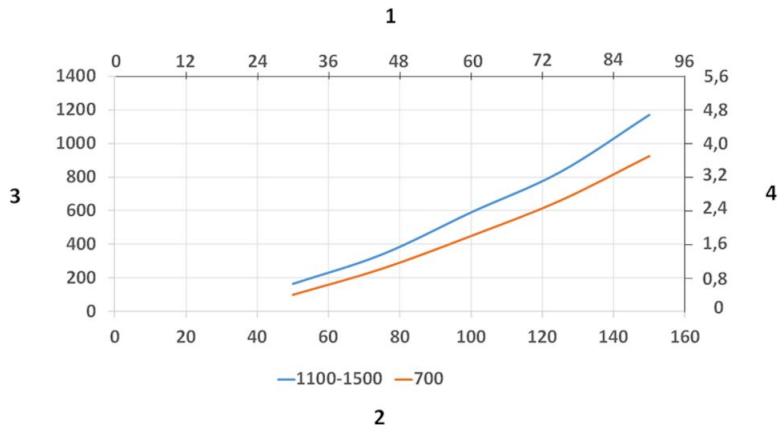
\*\*\*\*\*Down-Through

\*\*\*\*\*Up-Low

# Braço extrator de bancada FX2 50 ESD/EX

	[accessory]	[partno]
	Suporte FX-Bracket kit-D50/75/100-L190.	70501144
	Suporte FX2-Bracket kit-D50/75/100-L500	70377042
	Suporte FX2-Wall BRKT FLAT-L190-Black.	70377044
	Suporte de bancada FX2 D50/75/100	70501444
	Suporte FX-Classic D50/75/100	70501244
	Extensão FX-Cut2fit L1100.	70501344
	Extensão FX-Cut2fit L2200.	70374600
	Tampa FX-Ceiling cover plate	70502644
	Tampa FX-Ceiling cover plate PLUS	70377045
	Coifa FX-Combi ESD/EX-D50/75/100	70500244
	Coifa FX-Dome ESD/EX-D50/75/100.	70376983
	Coifa FX-Metal ESD/EX-D50/75/100	70500544
	Coifa FX-Flange ESD-D50/75/100	70502944
	Conector FX2-Duct connector-ESD/EX-D50	70377037
	Duto FX2-Al duct-L1000-D50toD77	70377056
	Duto FX2-Al duct-L2000-D50toD77	70377057
	FX2-Hose support ring-D75	70377067

## Braço extrator de bancada FX2 50 ESD/EX



Pressure Drop diagram:

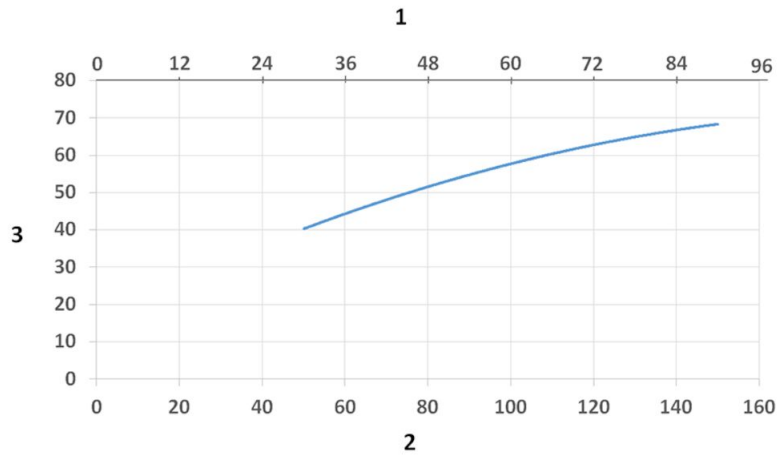
1) X- Axis: Air Flow Rate (cfm)

2) X- Axis: Air Flow Rate (m/h)

3) Y-Axis: Static Pressure Drop (Pa)

4) Y-Axis: Static Pressure Drop (in. wg.)

## Braço extrator de bancada FX2 50 ESD/EX



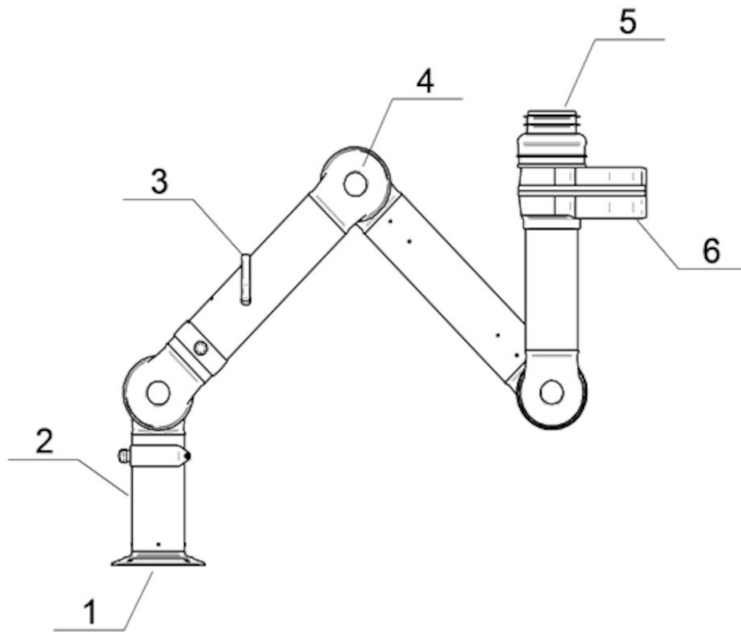
Sound Level diagram:

1) X- Axis: Air Flow Rate (cfm)

2) X- Axis: Air Flow Rate (m/h)

3) Y- Axis: Sound Pressure Level (dB) (A)

## Braço extrator de bancada FX2 50 ESD/EX



Material:

1) Flange: Conductive PP plastic

2) Tubes: Aluminum, anodized 10 µm

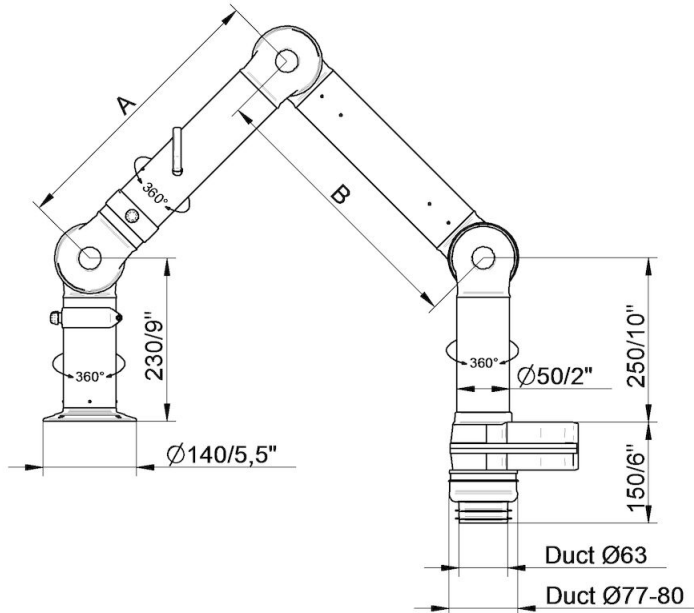
3) Damper adjustment handle: Aluminum: anodized 10 µm  
Internal spring: Stainless steel  
Damper blade: Conductive TP & PP plastic

4) Joints conductive: PP plastic with glass fibre reinforcement  
Plastic rings conductive: PP plastic with glass fibre reinforcement  
Axial locking rings conductive: PP plastic with glass fibre reinforcement  
Adjustment knobs: PA & EDS plastic  
Threaded shaft inside joints: Stainless Steel

5) Duct connector: conductive EPDM Rubber

6) Swivel: Aluminum, conductive powder coating  
Rivets: Aluminum  
Bearings swivel conductive: PP plastic with glass fibre reinforcement

## Braço extrator de bancada FX2 50 ESD/EX

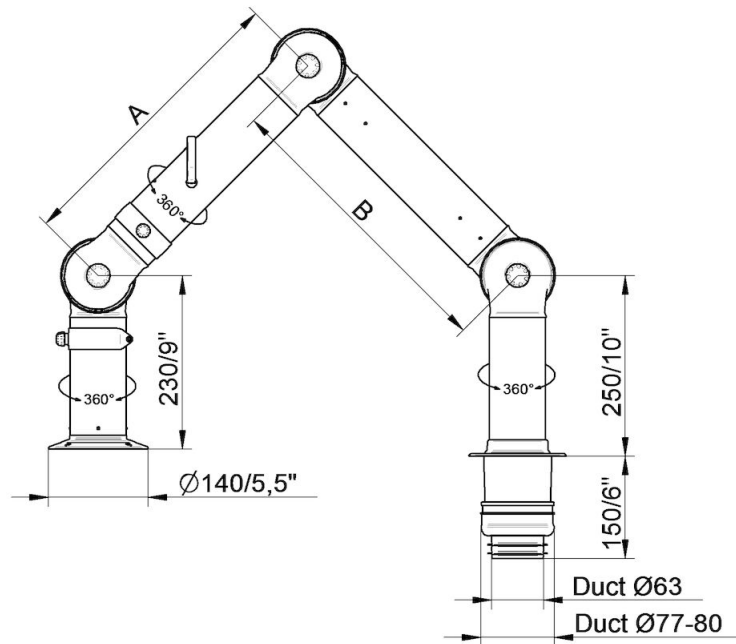


- FX2-ESD/EX-D50-L700-Up/Down-Low  
Part number: 70601244  
Max. working radius: 630 mm (24,8 in)  
A: 400 mm (15,7 in)

- FX2-ESD/EX-D50-L1100-Down-Low  
Part number: 70601744  
Max. working radius: 1030 mm (40,5 in)  
A: 400 mm (15,7 in)  
B: 400 mm (15,7 in)

- FX2-ESD/EX-D50-L1500-Down-Low  
Part number: 70602144  
Max. working radius: 1430 mm (56,3 in)  
A: 500 mm (19,7 in)  
B: 700 mm (27,6 in)

## Braço extrator de bancada FX2 50 ESD/EX



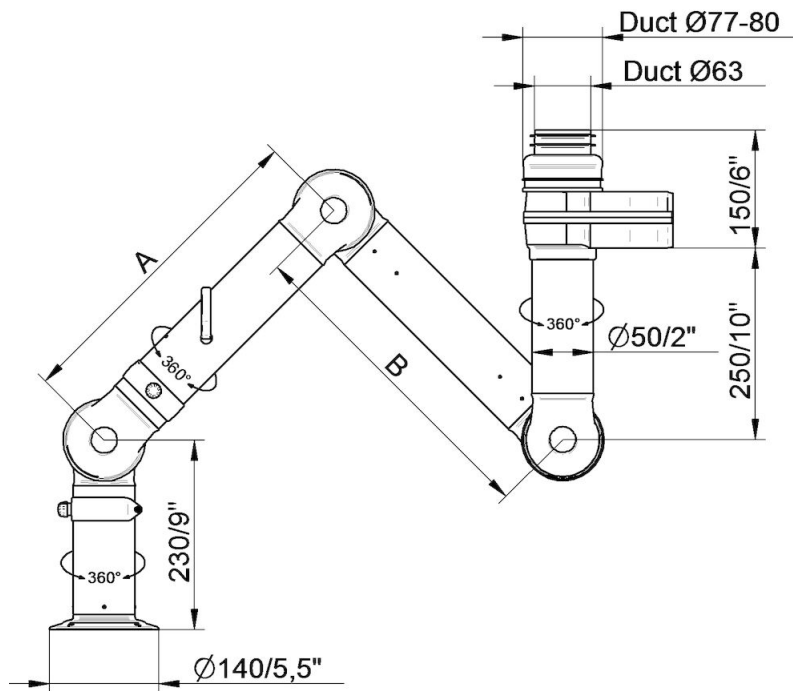
- FX2-ESD/EX-D50-L700-Up/Dow-Through  
Part number: 70601444  
Max. working radius: 630 mm (24,8 in)  
A: 400 mm (15,7 in)

- FX2-ESD/EX-D50-L1100-Down-Through  
Part number: 70601844  
Max. working radius: 1030 mm (40,5 in)  
A: 400 mm (15,7 in)  
B: 400 mm (15,7 in)

- FX2-ESD/EX-D50-L1500-Down-Through  
Part number: 70602244  
Max. working radius: 1430 mm (56,3 in)  
A: 500 mm (19,7 in)  
B: 700 mm (27,6 in)



## Braço extrator de bancada FX2 50 ESD/EX

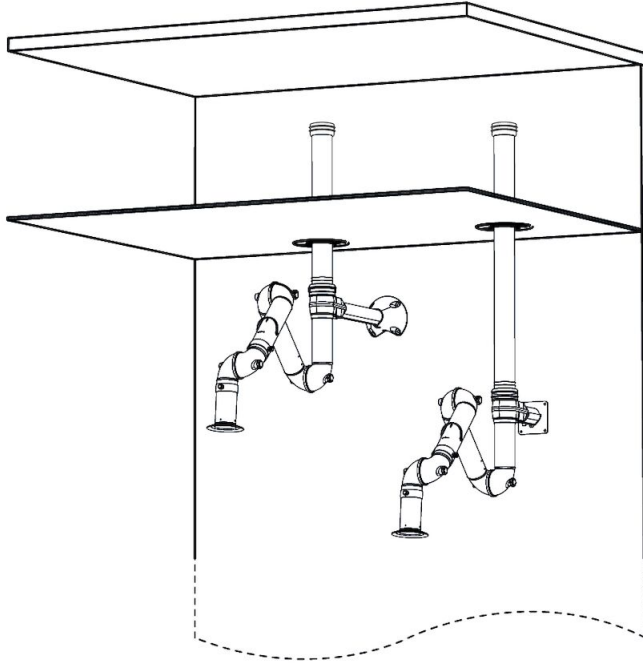


- FX2-ESD/EX-D50-L700-Up/Down-Low  
Part number: 70601244  
Max. working radius: 630 mm (24,8 in)  
A: 400 mm (15,7 in)

- FX2-ESD/EX-D50-L1100-Up-Low  
Part number: 70601544  
Max. working radius: 1030 mm (40,5 in)  
A: 400 mm (15,7 in)  
B: 400 mm (15,7 in)

- FX2-ESD/EX-D50-L1500-Up-Low  
Part number: 70601944  
Max. working radius: 1430 mm (56,3 in)  
A: 500 mm (19,7 in)  
B: 700 mm (27,6 in)

## Braço extrator de bancada FX2 50 ESD/EX



Wall mounting examples:

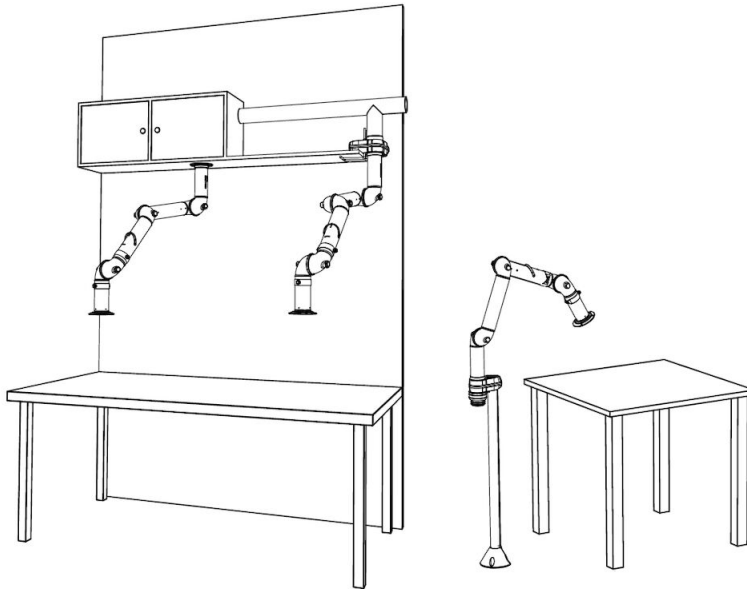
Left: FX2-Up-Low arm with following accessories:

- FX2-Bracket kit-D50/75/100-L500
- FX2-Ceiling cover plate-PLUS
- FX2-Alu duct
- FX2-Duct connector-ESD/EX-D75

Right: Up-Low arm with following accessories:

- FX2-Wall BRKT kit-Flat-L190-Black
- FX2-Ceiling cover plate-PLUS
- FX2-Alu duct
- FX2-Duct connector-ESD/EX-D75

## Braço extrator de bancada FX2 50 ESD/EX



Other mounting examples:

Left: Overbench cabinet mounting with FX2-Up/Down-Through arm

Middle: Shelf mounting with FX2-Up-Low arm and following accessories:

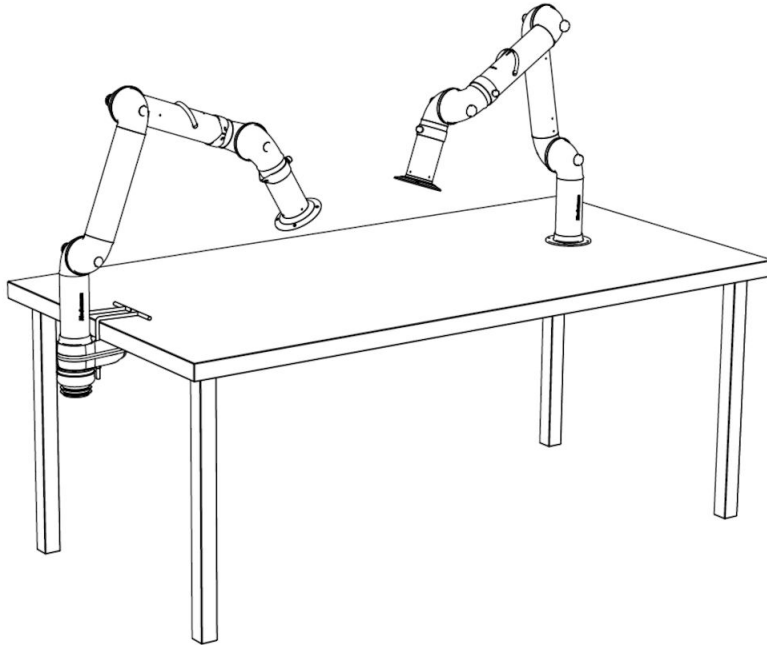
-FX2-Bench bracket kit

Right: Floor mounting with FX2-Up-Low arm and following accessories:

-FX-Classic bracket

-FX-Cut2fit extension-L1100

## Braço extrator de bancada FX2 50 ESD/EX



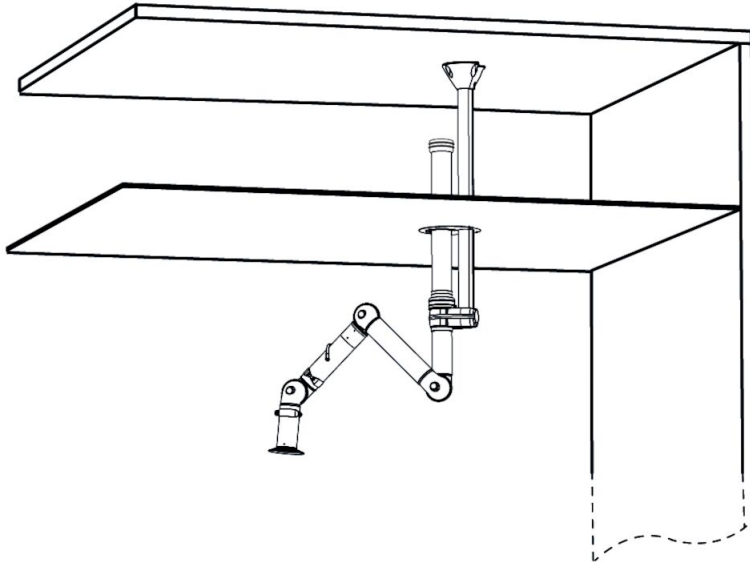
Bench mounting examples:

Left: FX2-Down-Low arm with following accessories:

-FX2-Bench bracket kit-D50/75/100

Right: FX2-Down-Through arm

## Braço extrator de bancada FX2 50 ESD/EX



Ceiling mounting example:

Left: FX2-Up-Low arm with following accessories:

- FX-Classic bracket
- FX-Cut2fit extension-L1100
- FX2-Alu duct
- FX2-Duct connector-ESD/EX-D75
- FX-Ceiling cover plate