

## Tezgâh Üstü Ekstraksiyon Kolu FX2 100 Orijinal

Küçük, esnek ve kullanımı kolay kolların gerekli olduğu uygulamalarda havada dolaşan tehlikeli kirletici maddelerin ekstraksiyonunun en ideal ve en tasarruflu çözümüdür.












Nederman FX2 kolları üç adet ayarlanabilir kompozit sürtünme birleşimine sahip hafif ağırlıkta eloksallı alüminyum kesitlerden imal edilmiştir. Kolay kullanımla birlikte sağlamlık ve dayanıklılık sunan bu ürünler birçok tipte ortamda kullanılabilirler. Özellikle küçük, esnek ve kullanımı kolay kolların gerekli olduğu uygulamalar için uygundur. Az elektriksel deşarj riski olan veya agresif kimyasallarca saldırı riski olan genel uygulamalar için sağlam ve güvenilir çok yönlü bir koldur.

- İdeal etkinlik ve düşük gürültü seviyesi güvenli ve sessiz çalışma ortamı sağlar.
- Tavanlara, duvarlara ve zeminlere veya tezgah üstüne montajlarına sabitlenmeleri ve uygun kesim uzatma profili maksimum montaj esnekliği sunar.
- En dıştaki iki kol birleşimi döner tertibatı 360° döndürebilir ki bu da eşsiz manevra kabiliyetini sağlar.
- Sade, pürüzsüz ve estetik bir tasarım kolların dayanıklılıklarından ve güvenilirliklerinden herhangi bir ödün vermeksizin her türlü ortamda en iyi şekilde uyum sağlamasına olanak tanır.
- Müşteriler için zaman ve maliyet tasarrufu sağlayan ve daha iyi bir performans sunmak için güvenilirlik ve işlevsellik sunan son derece entegre ürünler

Medya	Tezgâh Üstü Ekstraksiyon Kolu FX2 100 Orijinal
Ses Düzeyi(dB(A))	450 m <sup>3</sup> /saatte 62 dB(A)
Kurulum	[Indoor]
Materyal	Eloksallı alüminyum borular. İletken PP plastiklerde birleşimler. İletken EPDM lastik boru bağlantısı. PP plastikte mini hazne.
Dumam ısısı	max 70°C
Emiş kolu ölçüsü (mm)	100
Hava Debisi (m <sup>3</sup> /h)	200-450
Renk	Aluminum and white



## Tezgâh Üstü Ekstraksiyon Kolu FX2 100 Orijinal

[image]	Bilgi Dökümanı ismi	Kol uzunluğu (m)	Ağırlık (kg)	[model]
	FX2-ORIG-D100-L1200-Yukarı/Aşağı-Boyunca	1,2	4,8	70604744*
	FX2-ORIG-D100-L1200-Yukarı-ARTI	1,2	5,9	70604844**
	FX2-ORIG-D100-L1200-Yukarı/Aşağı-Boyunca	1,2	4,1	70604944***
	FX2-ORIG-D100-L1800-Yukarı-Alt	1,8	5,9	70605044****
	FX2-ORIG-D100-L1800-Yukarı-ARTI	1,8	7,7	70605144**
	FX2-ORIG-D100-L1800-Aşağı-Alt	1,8	5,9	70605244*****
	FX2-ORIG-D100-L1800-Aşağı-Boyunca	1,8	5,2	70605344*****
	FX2-ORIG-D100-L2400-Yukarı-Alt	2,4	6,9	70605444****
	FX2-ORIG-D100-L2400-Yukarı-ARTI	2,4	8,7	70605544**

\*Up/Down-Low

\*\*Up-PLUS

\*\*\*Up/Down-Through

\*\*\*\*Up-Low

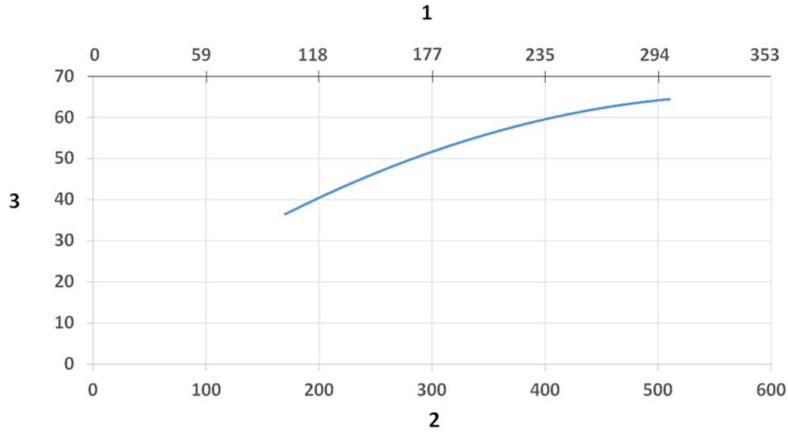
\*\*\*\*\*Down-Low

\*\*\*\*\*Down-Through

## Tezgâh Üstü Ekstraksiyon Kolu FX2 100 Orijinal

	[accessory]	[partno]
	FX-braket kiti-D50/75/100-L190	70501144
	FX2-braket kiti-D50/75/100-L500	70377042
	FX2-duvar BRKT kit-düz-L190-Beyaz	70377043
	FX2-duvar-P BRKT kit-D50/75/100-L190	70377046
	FX2-tezgah braket kiti-D50/75/100	70501444
	FX-klasik braket-D50/75/100	70501244
	FX-uygun Kesim uzantı-L1100.	70501344
	FX-Uygun Kesim uzantı-L2200	70374600
	FX-Tavan kapatma plakası.	70502644
	FX2-Tavan kapatma plakası-PLUS	70377045
	FX-Kombi gövde-ORİJİNAL-D50/75/100	70500144
	FX-Kubbe gövde-ORİJİNAL-D50/75/100	70376982
	FX-metal gövde-ORIG/CHEM-D50/75/100	70500444
	FX-Flanş gövde-ORİJİNAL-D50/75/100	70502844
	FX2-Kanal konnektör -ORIG/CHEM-D100	70377040
	FX2-AI Kanal-L1000-D75/100toD100	70377058
	FX2-AI Kanal-L2000-D75/100toD100	70377059
	FX-Hortum-D100-L3000-gri	70377099
	FX-Hortum D125-L5000-gri	70377100
	FX2-Hose support ring-D100	70377068
	FX2-Hose support ring-D125	70377069

## Tezgâh Üstü Ekstraksiyon Kolu FX2 100 Orijinal



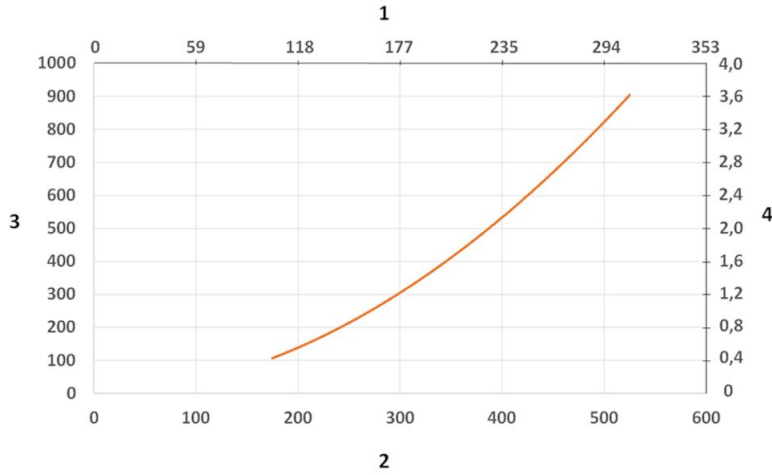
Sound Level diagram:

1) X- Axis: Air Flow Rate (cfm)

2) X- Axis: Air Flow Rate (m/h)

3) Y-Axis: Sound Pressure Level (dB) (A)

## Tezgâh Üstü Ekstraksiyon Kolu FX2 100 Orijinal



Pressure Drop diagram:

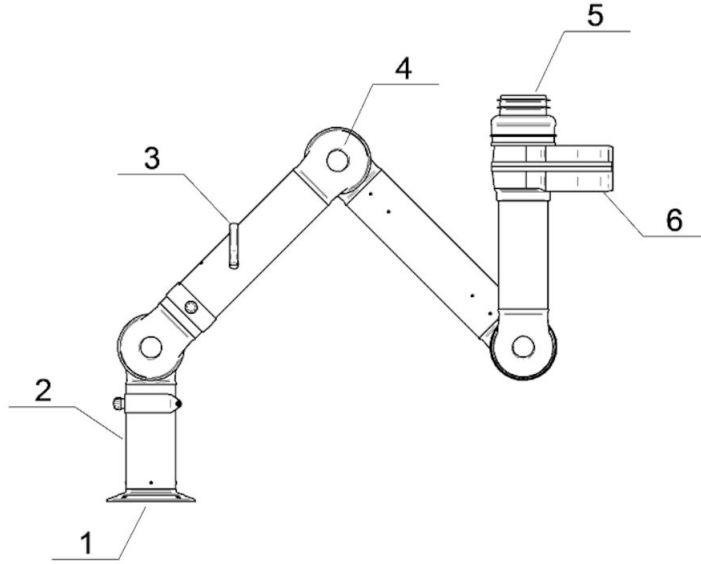
1) X- Axis: Air Flow Rate (cfm)

2) X- Axis: Air Flow Rate (m/h)

3) Y- Axis: Static Pressure Drop (Pa)

4) Y- Axis: Static Pressure Drop (in. wg.)

## Tezgâh Üstü Ekstraksiyon Kolu FX2 100 Orijinal



**Material:**

1) Flange: PP

2) Tubes: Aluminum, anodized 10 µm

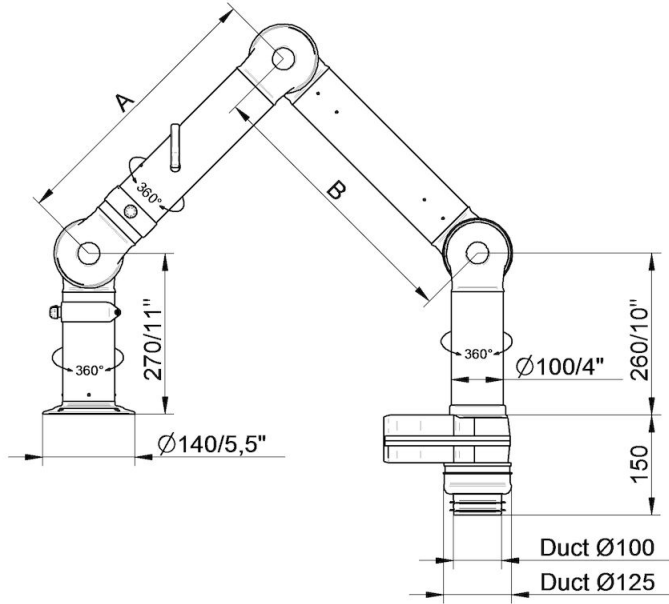
3) Damper adjustment handle: Aluminum, anodized 10 µm  
Internal spring: Stainless steel  
Damper blade: Conductive TP & PP plastic

4) Joints: PP with glass fibre reinforcement  
Plastic rings: PP with glass fibre reinforcement  
Axial locking rings: PP with glass fibre reinforcement  
Adjustment knobs: PA & EDS plastic  
Threaded shaft inside joints: Stainless Steel

5) Duct connector: EPDM Rubber

6) Swivel: Aluminum, powder coating  
Rivets: Aluminum  
Bearings swivel: PP plastic with glass fibre reinforcement

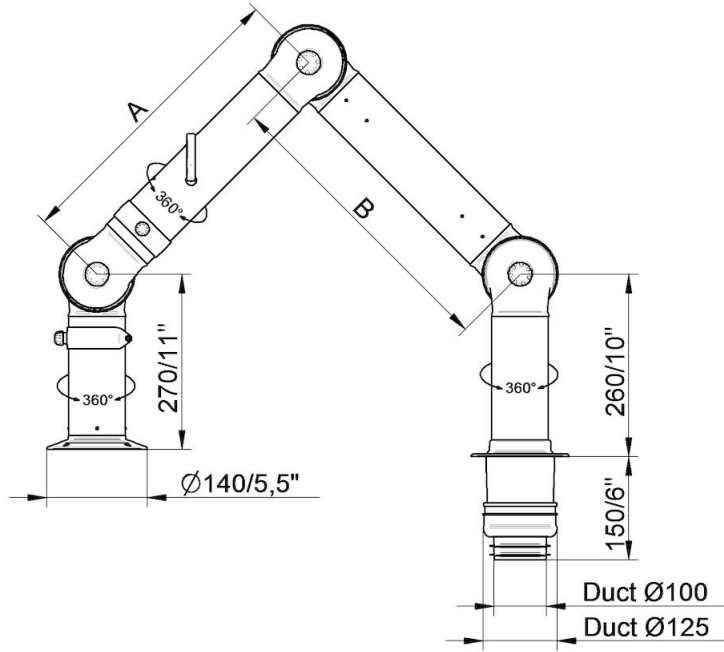
## Tezgâh Üstü Ekstraksiyon Kolu FX2 100 Orijinal



- FX2-ORIG-D100-L1200-Up/Down-Low  
Part number: 70604744  
Max. working radius: 1170 mm (46,1 in)  
A: 450 mm (17,7 in)  
B: 450 mm (17,7 in)

- FX2-ORIG-D100-L1800-Down-Low  
Part number: 70605244  
Max. working radius: 1770 mm (69,7 in)  
A: 750 mm (29,5 in)  
B: 750 mm (29,5 in)

## Tezgâh Üstü Ekstraksiyon Kolu FX2 100 Orijinal

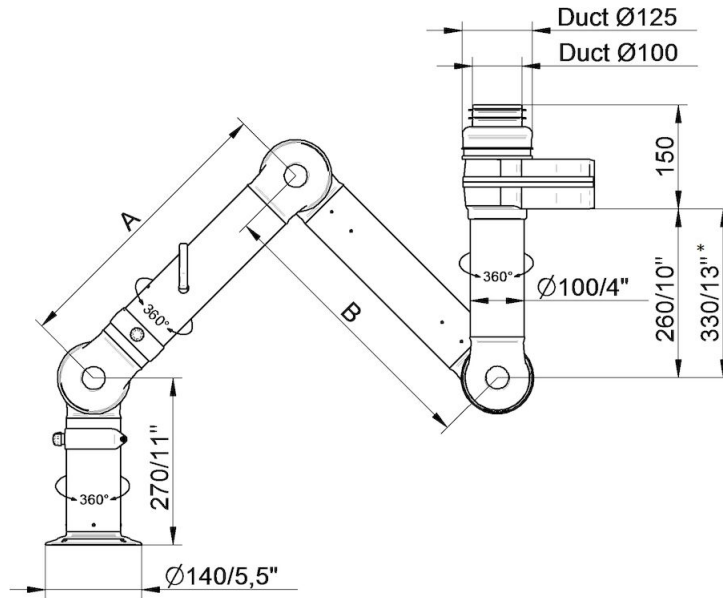


- FX2-ORIG-D100-L1200-Up/Down-Through  
Part number: 70604944  
Max. working radius: 1170 mm (46,1 in)  
A: 450 mm (17,7 in)  
B: 450 mm (17,7 in)

- FX2-ORIG-D100-L1800-Down-Through  
Part number: 70605344  
Max. working radius: 1770 mm (69,7 in)  
A: 750 mm (29,5 in)  
B: 750 mm (29,5 in)



## Tezgâh Üstü Ekstraksiyon Kolu FX2 100 Orijinal

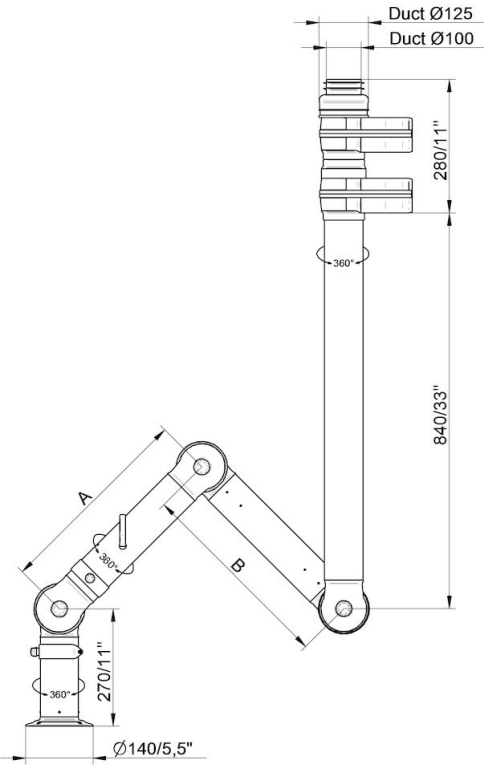


- FX2-ORIG-D100-L1200-Up/Down-Low  
Part number: 70604744  
Max. working radius: 1170 mm (46,1 in)  
A: 450 mm (17,7 in)  
B: 450 mm (17,7 in)

- FX2-ORIG-D100-L1800-Up-Low  
Part number: 70605044  
Max. working radius: 1770 mm (69,7 in)  
A: 750 mm (29,5 in)  
B: 750 mm (29,5 in)

- FX2-ORIG-D100-L2400-Up-Low  
Part number: 70605444  
Max. working radius: 2290 mm (90,2 in)  
A: 1010 mm (39,7 in)  
B: 1010 mm (39,7 in)

## Tezgâh Üstü Ekstraksiyon Kolu FX2 100 Orijinal

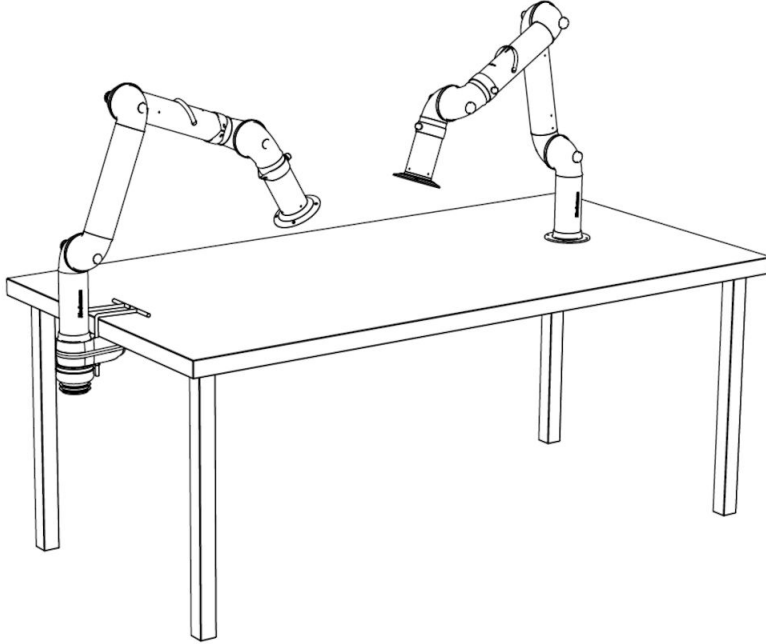


FX2-ORIG-D100-L1200-Up-PLUS  
Part number: 70604844  
Max. working radius: 1170 mm (46,1 in)  
A: 450 mm (17,7 in)  
B: 450 mm (17,7 in)

• FX2-ORIG-D100-L1800-Up-PLUS  
Part number: 70605144  
Max. working radius: 1770 mm (69,7 in)  
A: 750 mm (29,5 in)  
B: 750 mm (29,5 in)

• FX2-ORIG-D100-L2400-Up-PLUS  
Part number: 70605544  
Max. working radius: 2290 mm (90,2 in)  
A: 1010 mm (39,7 in)  
B: 1010 mm (39,7 in)

## Tezgâh Üstü Ekstraksiyon Kolu FX2 100 Orijinal



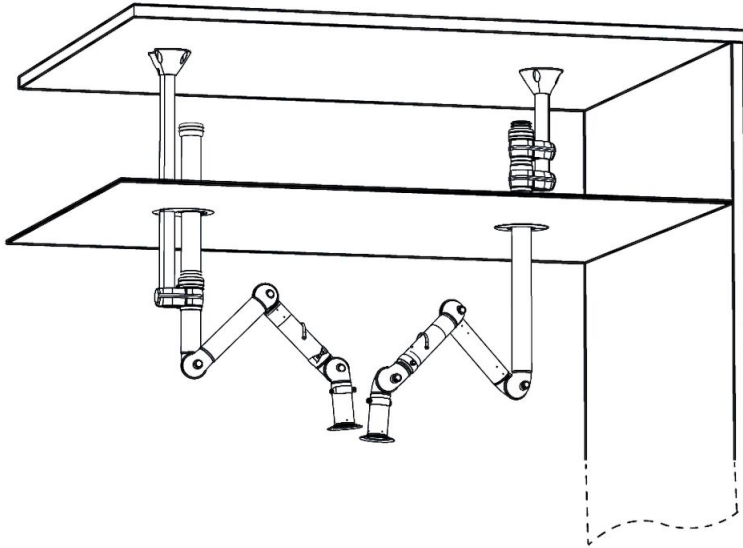
Bench mounting examples:

Left: FX2-Down-Low arm with following accessories:

-FX2-Bench bracket kit-D50/75/100

Right: FX2-Down-Through arm

## Tezgâh Üstü Ekstraksiyon Kolu FX2 100 Orijinal



Ceiling mounting example:

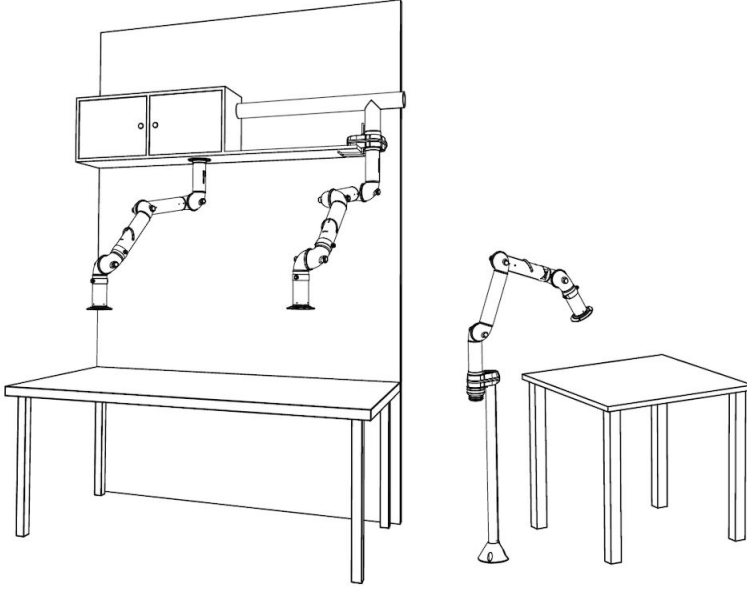
Left: FX2-Up-Low arm with following accessories:

- FX-Classic bracket
- FX-Cut2fit extension-L1100
- FX2-Alu duct
- FX2-Duct connector-ORIG/CHEM-D100
- FX-Ceiling cover plate

Right: FX2-Up-PLUS arm with following accessories:

- FX2-Bracket kit-D50/75/100-L500
- FX2-Ceiling cover plate-PLUS

## Tezgâh Üstü Ekstraksiyon Kolu FX2 100 Orijinal



Other mounting examples:

Left: Overbench cabinet mounting with FX2-Up/Down-Through arm

Middle: Shelf mounting with FX2-Up-Low arm and following accessories:

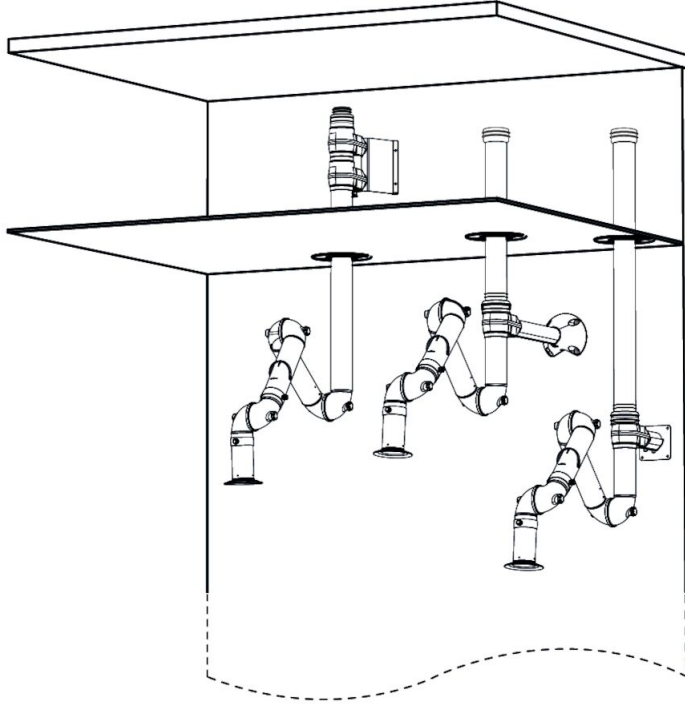
-FX2-Bench bracket kit

Right: Floor mounting with FX2-Up-Low arm and following accessories:

-FX-Classic bracket

-FX-Cut2fit extension-L1100

## Tezgâh Üstü Ekstraksiyon Kolu FX2 100 Orijinal



Wall mounting examples:

Left: FX2-Up-PLUS arm with following accessories:

- FX2-Wall-P BRKT kit-D50/75/100-L190
- FX2-Ceiling cover plate-PLUS

Middle: FX2-Up-Low arm with following accessories:

- FX2-Bracket kit-D50/75/100-L500
- FX2-Ceiling cover plate-PLUS
- FX2-Alu duct
- FX2-Duct connector-ORIG/CHEM-D100

Right: FX2-Up-Low arm with following accessories:

- FX2-Wall BRKT kit-Flat-L190-White
- FX2-Ceiling cover plate-PLUS
- FX2-Alu duct
- FX2-Duct connector-ORIG/CHEM-D100