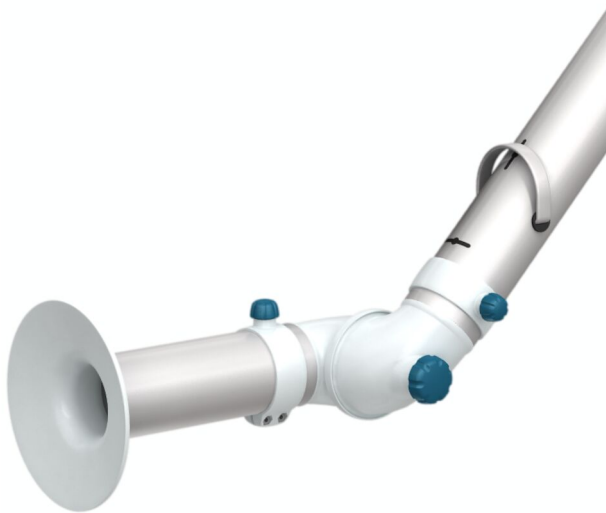


Braço extrator de bancada FX2 50 Original

Solução de melhor custo-benefício para aplicações onde captos compactos, flexíveis e simples sejam necessários.



Os braços Nederman FX2 são fabricados em seções de alumínio anodizado leve, com dois ou três juntas de ajuste feitas em material composto. Oferecem resistência e durabilidade combinadas com fácil utilização para utilização em diversas aplicações. São especialmente indicados para aplicações onde captos compactos, flexíveis simples são necessários.












Uma linha completa e confiável para aplicações triviais e outras onde existe risco de descargas elétricas ou substâncias corrosivas.

- Excelente eficiência e baixo nível de ruído garantem um ambiente de trabalho seguro e agradável.
- Suportes para fixação em teto, parede, pisos e bancadas, e os perfis de extensão Cut2fit garantem máxima flexibilidade de instalação.
- As justas externas permitem rotação 360° das seções do braço, garantindo total e exclusiva manobrabilidade.
- O desenho leve, suave e estético permite que os braços se adequem a qualquer ambiente sem comprometer sua durabilidade e confiabilidade.
- Produtos totalmente integrados que economizam tempo e custos, além de prover alta confiabilidade e funcionalidade.

Nome do Produto	Braço extrator de bancada FX2 50 Original
Nível de ruído (dB(A))	60 dB(A) at 110 m ³ /h
Instalação	Interior
Material	Tubes in anodized aluminium. Joints in PP plastic. Duct connectors in EPDM rubber. Minihood in PP plastic.
Temperatura dos fumos	max 70°C
Diâmetro do braço de extração (mm)	50
Caudal (m ³ /h)	50 - 110
Cor	Aluminum and white



Braço extrator de bancada FX2 50 Original

[image]	Descrição	Comprimento do braço (m)	Peso (kg)	[model]
	FX2-ORIG-D50-L700-Up/Down-Low	0,7	1,7	70600144*
	FX2-ORIG-D50-L700-Up-PLUS	0,7	2,7	70600244**
	FX2-ORIG-D50-L700-Up/Down-Through	0,7	1,2	70600344*
	FX2-ORIG-D50-L1100-Up-Low	1,1	2,3	70600444***
	FX2-ORIG-D50-L1100-Up-PLUS	1,1	3,3	70600544**
	FX2-ORIG-D50-L1100-Down-Low	1,1	2,3	70600644****
	FX2-ORIG-D50-L1100-Down-Through	1,1	1,8	70600744*****
	FX2-ORIG-D50-L1500-Up-Low	1,5	2,6	70600844***
	FX2-ORIG-D50-L1500-Up-PLUS	1,5	3,6	70600944**
	FX2-ORIG-D50-L1500-Down-Low	1,5	2,6	70601044****
	FX2-ORIG-D50-L1500-Down-Through	1,5	2,1	70601144*****

*Up/Down-Low

**Up-PLUS

***Up-Low

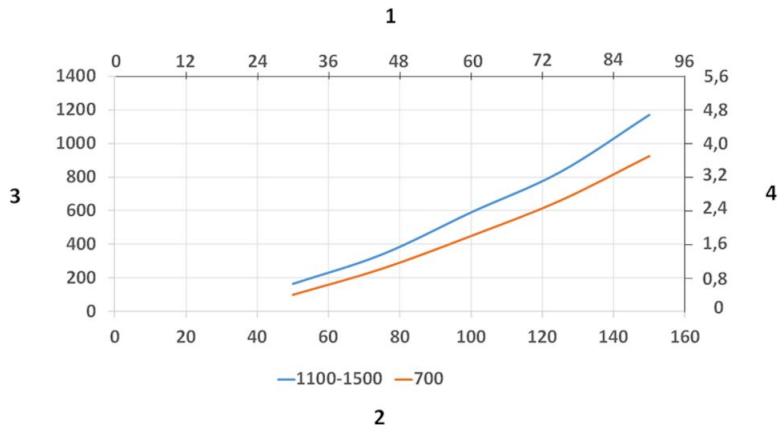
****Down-Low

*****Down-Through

Braço extrator de bancada FX2 50 Original

	[accessory]	[partno]
	Suporte FX-Bracket kit-D50/75/100-L190.	70501144
	Suporte FX2-Bracket kit-D50/75/100-L500	70377042
	Suporte FX2-Wall BRKT FLAT-L190-White	70377043
	Suporte FX2-Wall-P BRKT D50/75/100-L190	70377046
	Suporte de bancada FX2 D50/75/100	70501444
	Suporte FX-Classic D50/75/100	70501244
	Extensão FX-Cut2fit L1100.	70501344
	Extensão FX-Cut2fit L2200.	70374600
	Tampa FX-Ceiling cover plate	70502644
	Tampa FX-Ceiling cover plate PLUS	70377045
	Coifa FX-Combi ORIGINAL-D50/75/100.	70500144
	Coifa FX-Dome ORIGINAL-D50/75/100.	70376982
	Coifa FX-Metal ORIG/CHEM-D50/75/100.	70500444
	Coifa FX-Flange ORIGINAL-D50/75/100	70502844
	Conector FX2-Duct connector-ESD/EX-D100	70377036
	Duto FX2-Al duct-L1000-D50toD77	70377056
	Duto FX2-Al duct-L2000-D50toD77	70377057
	FX2-Hose support ring-D75	70377067

Braço extrator de bancada FX2 50 Original

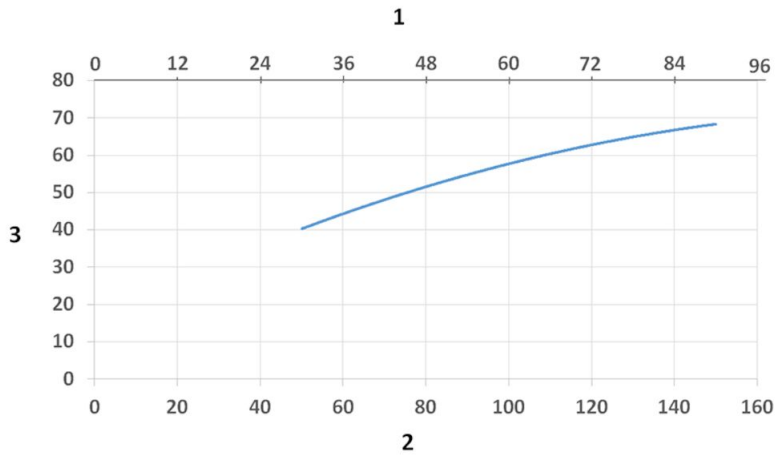


Pressure Drop diagram:

1) X- Axis: Air Flow Rate (cfm)
2) X- Axis: Air Flow Rate (m/h)

3) Y- Axis: Static Pressure Drop (Pa)
4) Y- Axis: Static Pressure Drop (in. wg.)

Braço extrator de bancada FX2 50 Original



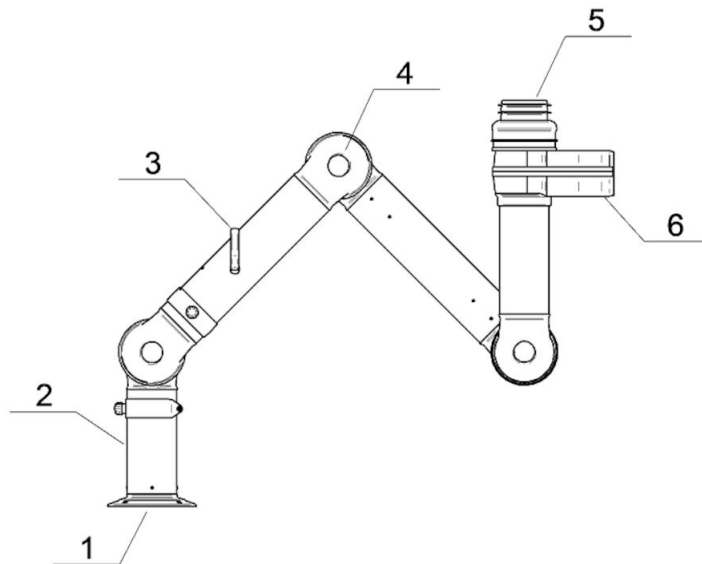
Sound Level diagram:

1) X- Axis: Air Flow Rate (cfm)

2) X- Axis: Air Flow Rate (m/h)

3) Y- Axis: Sound Pressure Level (dB) (A)

Braço extrator de bancada FX2 50 Original



Material:

1) Flange: Polipropileno

2) Tubos: Alumínio anodizado 10 µm

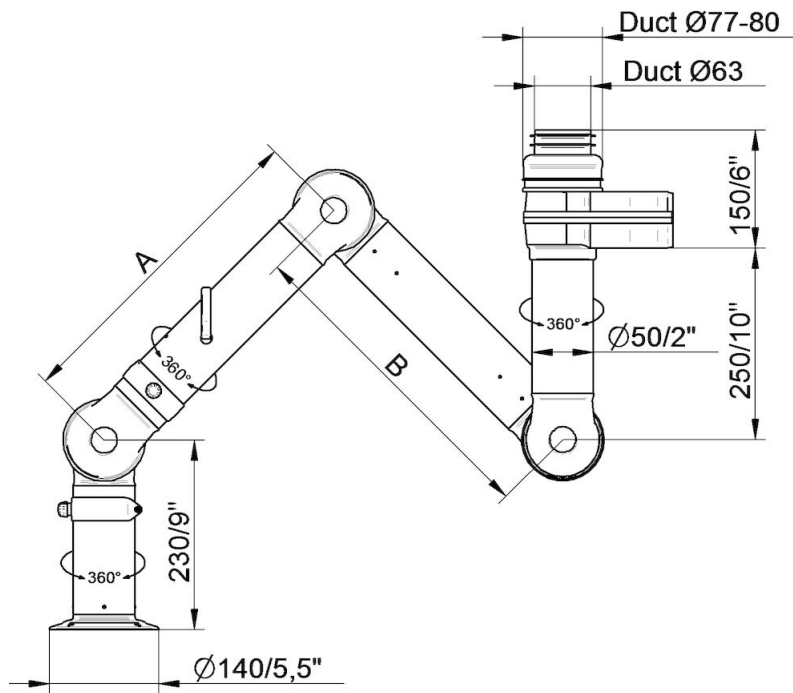
3) Alça do damper: Alumínio anodizado 10 µm
Mola interna: aço inoxidável
Swivel em Polipropileno com reforço em fibra de vidro
Chapa do damper: Elastômero termoplástico

4) Juntas: polipropileno com reforço em fibra de vidro
Anéis plásticos: polipropileno com reforço em fibra de vidro
Anéis de travamento: polipropileno com reforço em fibra de vidro
Botões de ajuste: polipropileno com fibra de vidro reforçado com aço galvanizado
Juntas internas do eixo: Aço inoxidável

5) Conector do tubos: EPDM borracha

6) Swivel: Alumínio, pintura PP
Rebites: Alumínio

Braço extrator de bancada FX2 50 Original

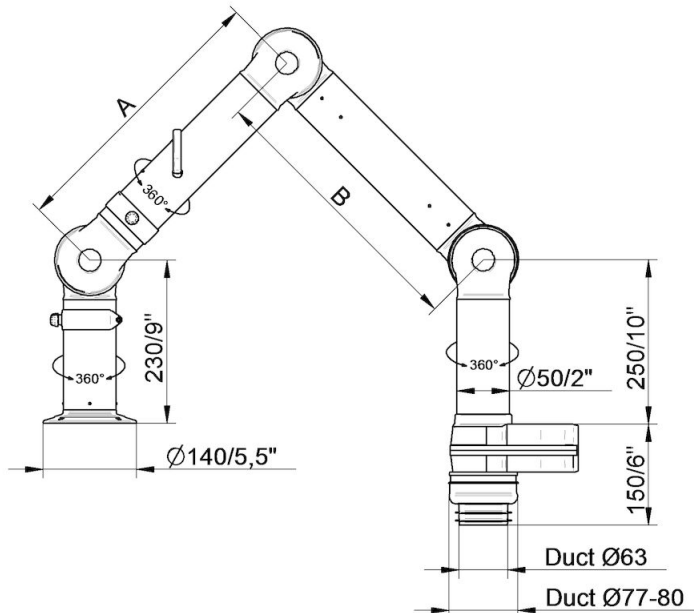


- FX2-ORIG-D50-L700-Up/Down-Low
Part number: 70600144
Max. working radius: 630 mm (24,8 in)
A: 400 mm (15,7 in)

- FX2-ORIG-D50-L1100-Up-Low
Part number: 70600444
Max. working radius: 1030 mm (40,5 in)
A: 400 mm (15,7 in)
B: 400 mm (15,7 in)

- FX2-ORIG-D50-L1500-Up-Low
Part number: 70600844
Max. working radius: 1430 mm (56,3 in)
A: 500 mm (19,7 in)
B: 700 mm (27,6 in)

Braço extrator de bancada FX2 50 Original

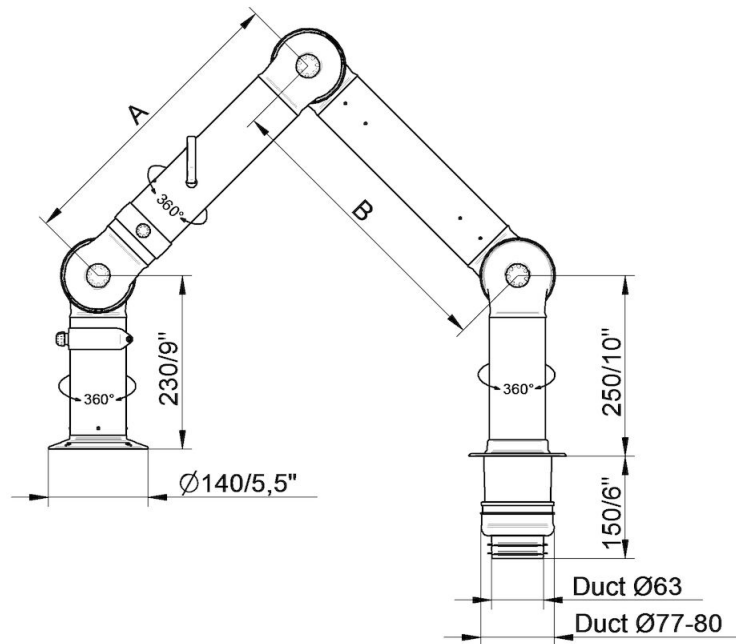


- FX2-ORIG-D50-L700-Up/Down-Low
Part number: 70600144
Max. working radius: 630 mm (24,8 in)
A: 400 mm (15,7 in)

- FX2-ORIG-D50-L1100-Down-Low
Part number: 70600644
Max. working radius: 1030 mm (40,5 in)
A: 400 mm (15,7 in)
B: 400 mm (15,7 in)

- FX2-ORIG-D50-L1500-Down-Low
Part number: 70601044
Max. working radius: 1430 mm (56,3 in)
A: 500 mm (19,7 in)
B: 700 mm (27,6 in)

Braço extrator de bancada FX2 50 Original

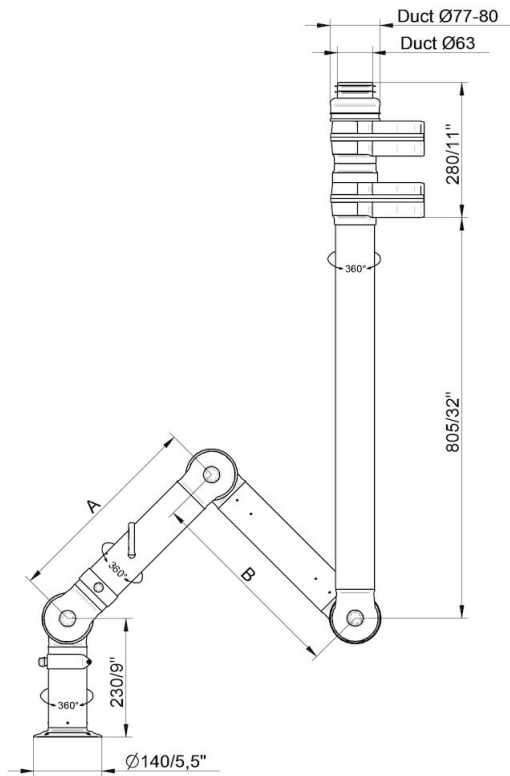


Part number: 70600344
 Max. working radius: 630 mm (24,8 in)
 A: 400 mm (15,7 in)

- FX2-ORIG-D50-L1100-Down-Through
 Part number: 70600744
 Max. working radius: 1030 mm (40,5 in)
 A: 400 mm (15,7 in)
 B: 400 mm (15,7 in)

- FX2-ORIG-D50-L1500-Down-Through
 Part number: 70601144
 Max. working radius: 1430 mm (56,3 in)
 A: 500 mm (19,7 in)
 B: 700 mm (27,5 in)

Braço extrator de bancada FX2 50 Original

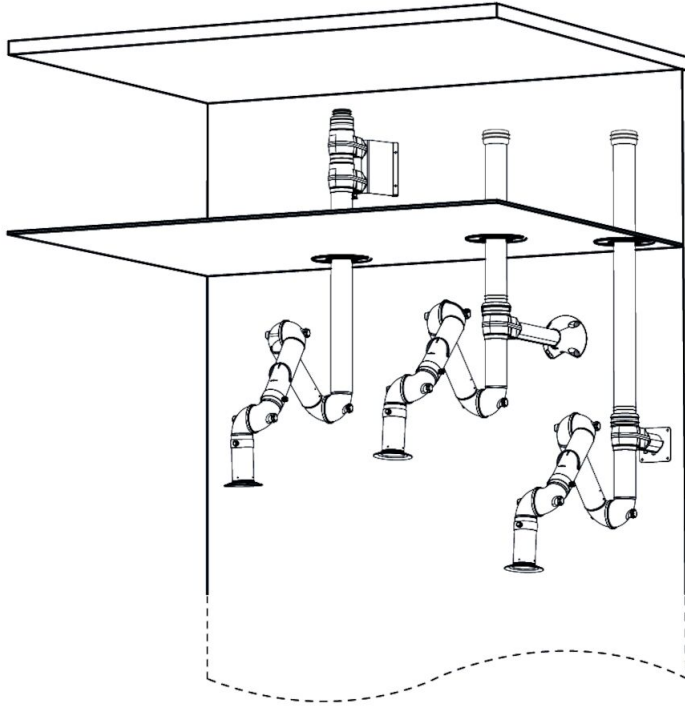


- FX2-ORIG-D50-L700-Up-PLUS
Part number: 70600244
Max. working radius: 630 mm (24,8 inch)
A: 400 mm (15,7 in)

- FX2-ORIG-D50-L1100-Up-PLUS
Part number: 70600544
Max. working radius: 1030 mm (40,5 in)
A: 400 mm (15,75 in)
B: 400 mm (15,7 in)

- FX2-ORIG-D50-L1500-Up-PLUS
Part number: 70600944
Max. working radius: 1430 mm (56,3 in)
A: 500 mm (19,7 in)
B: 700 mm (27,6 in)

Braço extrator de bancada FX2 50 Original



Wall mounting examples:

Left: FX2-Up-PLUS arm with following accessories:

- FX2-Wall-P BRKT kit-D50/75/100-L190
- FX2-Ceiling cover plate-PLUS

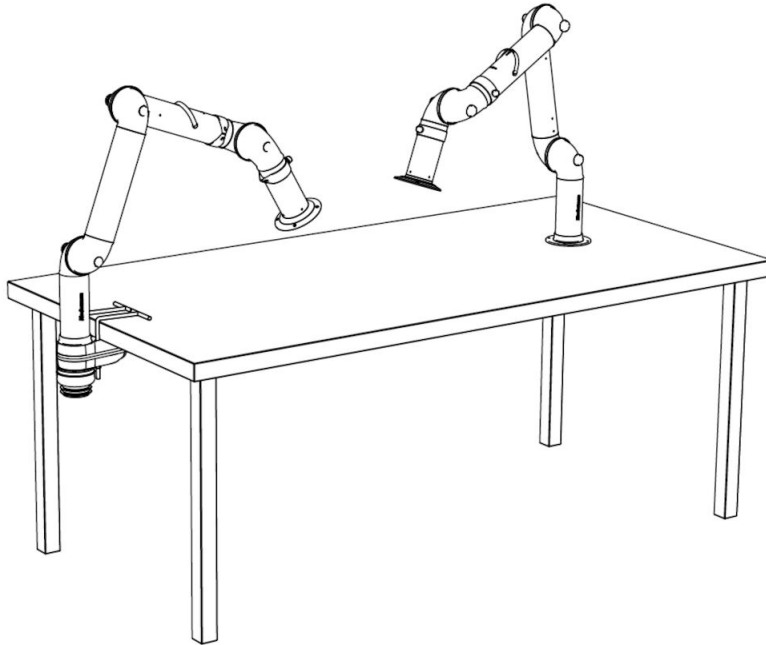
Middle: FX2-Up-Low arm with following accessories:

- FX2-Bracket kit-D50/75/100-L500
- FX2-Ceiling cover plate-PLUS
- FX2-Alu duct
- FX2-Duct connector-ORIG/CHEM-D75

Right: Up-Low arm with following accessories:

- FX2-Wall BRKT kit-Flat-L190-White
- FX2-Ceiling cover plate-PLUS
- FX2-Alu duct
- FX2-Duct connector-ORIG/CHEM-D75

Braço extrator de bancada FX2 50 Original



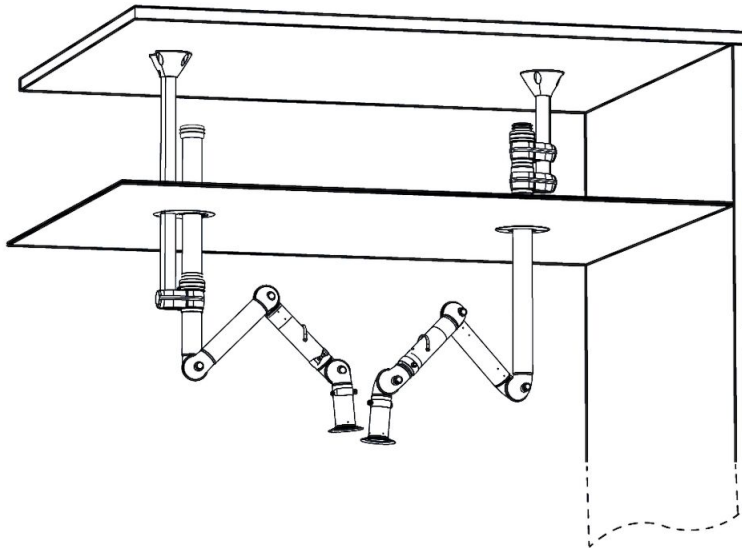
Bench mounting examples:

Left: FX2-Down-Low arm with following accessories:

-FX2-Bench bracket kit-D50/75/100

Right: FX2-Down-Through arm

Braço extrator de bancada FX2 50 Original



Ceiling mounting example:

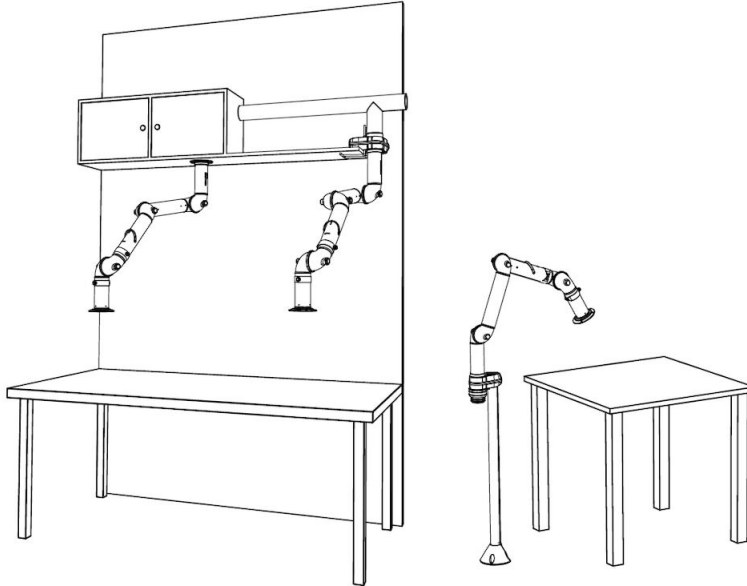
Left: FX2-Up-Low arm with following accessories:

- FX-Classic bracket
- FX-Cut2fit extension-L1100
- FX2-Alu duct
- FX2-Duct connector-ORIG/CHEM-D75
- FX-Ceiling cover plate

Right: FX2-Up-PLUS arm with following accessories:

- FX2-Bracket kit-D50/75/100-L500
- FX2-Ceiling cover plate-PLUS

Braço extrator de bancada FX2 50 Original



Other mounting examples:

Left: Over bench cabinet mounting with FX2-Up/Down-Through arm

Middle: Shelf mounting with FX2-Up-Low arm and following accessories:

-FX2-Bench bracket kit

Right: Floor mounting with FX2-Up-Low arm and following accessories:

-FX-Classic bracket

-FX-Cut2fit extension-L1100