

## FE 24/7 2.5

Mobile unit for continuous welding application and for one or two users. Fumes extracted directly at the torch.



The FE 24/7 2.5 is a mobile high vacuum unit designed to extract welding fumes in a continuous basis. Connected to a welding torch with integrated extraction, the FE 24/7 2.5 unit extracts the fumes directly at source for one or two welders. Automatic filter cleaning, side channel fans with high capacity and all special values that a Nederman product offers.

Upgrade with automatic start/stop function is available for user-friendly operation and improved energy efficiency.

The unit comes with 5m electric cable with CEE plug.

- Fumes are extracted efficiently during long shifts of welding thanks to the continuous run, efficient and maintenance-free side channel blower.
- Easy adjustment of air flow depending on application improves productivity and energy efficiency.
- Efficient and automatic filter cleaning assures long filter life for low operating cost.
- Integrated spark trap protects the FE 24/7 from sparks and minimizes the risk of damages to the filter cartridge.
- Filtered air can be re-circulated even when particulates are from high alloy steel. The unit is W3 approved (EN 15012).

Product name	FE 24/7 2.5
Noise level (dB(A))	73
Filter efficiency (%)	99
Installation	[Indoor]
Material	Sheet metal
Filter cleaning method	[CompressedAir]
Application	[fumes]
Working pressure (kPa)	37,5
Max Airflow (m3/h)	270
Filter Area (m²)	5
Power Voltage (V)	400
Frequency (Hz)	50 / 60
No of phases	3
Filter type	[cartridge]
Number of filter elements	1
Filter material	Polyester
Electric plug	Euro (CEE 7/2 P+E)
Noise level (dB(A))	73
Weight (kg)	59
Power (kW)	2,5



Fumes

## FE 24/7 2.5

[image]	Description	[model]
	FE 24/7 2.5	55999401

## FE 24/7 2.5



Accessories configuration for one user, 45mm welding machine connection.

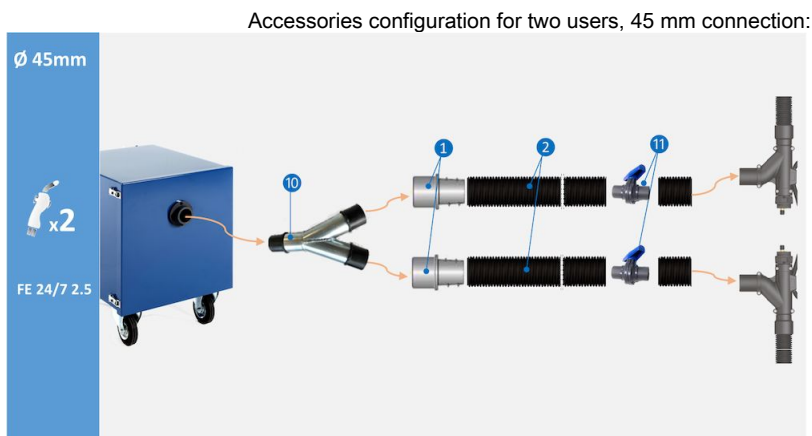
- (1) Hose Coupler M50-44P, art.no. 55999418
- (2) Hose Superflex Ø45mm Black 5m, art.no. 55999411
- (3) Nozzle TM-200 Funnel, art.no. 55999413
- (13) Sensor Clamp with plug for automatic start/stop, art.no. 55999410

## FE 24/7 2.5



Accessories configuration for one user, 50mm welding machine connection.

- (4) Hose Coupler M50-50P, art.no. 55999416
- (5) Hose PE-51 L=5m, art.no. 55999412
- (6) Hose Coupler F50-50P, art.no. 55999417
- (7) Nozzle CWN-S 105/50 Silencer, art.no. 55999415
- (8) Nozzle CWN-S 105/50L Silencer, art.no. 55999414
- (9) Magnetic foot for nozzle CWN-S, art.no. 55999419
- (13) Sensor Clamp with plug for automatic start/stop, art.no. 55999410

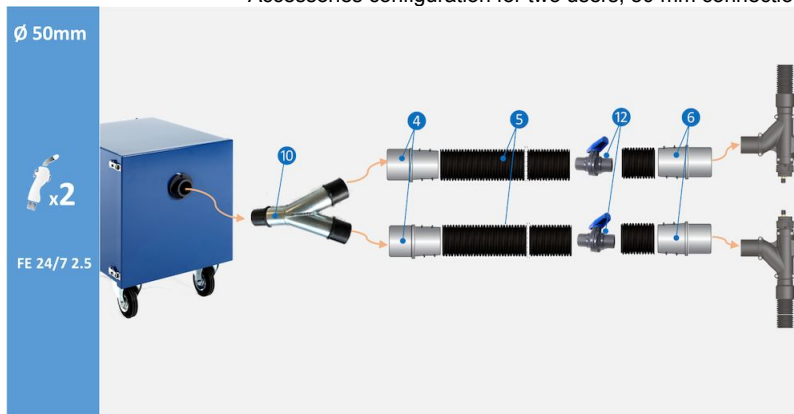


Accessories configuration for two users, 45mm welding machine connection.

- (10) Branch 50/50/50, art.no. 55999420
- (1) Hose Coupler M50-44P, art.no. 55999418
- (2) Hose Superflex Ø45mm Black 5m, art.no. 55999411
- (11) Ball valve 44mm, art.no. 55999422

## FE 24/7 2.5

Accessories configuration for two users, 50 mm connection:



Accessories configuration for two users, 50mm welding machine connection.

- (10) Branch 50/50/50, art.no. 55999420
- (4) Hose Coupler M50-50P, art.no. 55999416
- (5) Hose PE-51 L=5m, art.no. 55999412
- (12) Ball valve 51mm, art.no. 55999421
- (6) Hose Coupler F50-50P, art.no. 55999417

