

## Exhaust rail system 920 for stationary vehicles

---



Easy to handle systems for all types of workshops. Consists of a basic rail system which is completed with an exhaust extraction kit. Very high extraction efficiency. One extraction unit can serve several workbays. Extraction units are easy to move, thanks to lightweight material and ball bearing wheels. Two 400 units serve cars with twin exhaust pipes. Manual disconnection of exhaust nozzles.









For choice of nozzles, see Exhaust nozzles.

- Compact, modern design
- Easy to position and move by hand
- Automatic damper for airflow control
- Quick and simple installation - less ducting work, reduces cost

Product name	Exhaust rail system 920 for stationary vehicles
Installation	[Indoor]
Material	Rail - Aluminium. Sealing lips - EPDM rubber. Trolley - Glassfibre Composite
Operating Temperature	Max 150 °C ( 300 °F)
Colour	Grey



## Exhaust rail system 920 for stationary vehicles

Image	Description	Type of hose <sup>1</sup>	Diameter, hose (mm)	Hose length (m)	Model
	Trolley 400 extraction unit with nozzle storage and damper	NTP	100	5	20915720*
	Trolley 400 extraction unit with nozzle storage and damper	NR-CP	100	5	20915220*
	Trolley 400 extraction unit with nozzle storage and damper	NTP	100	7,5	20915120*
	Trolley 400 extraction unit with balancer, damper and hose suspension	NTP	100	5	20915620*
	Trolley 400 extraction unit with balancer, damper and hose suspension	NR-CP	100	5	20915520*
	Trolley 400 extraction unit with balancer, damper and hose suspension	NTP	100	7,5	20915020*
	Trolley 1500 extraction unit with balancer, damper and hose suspension	NR-CP	150	5	20914020**
	Trolley 1500 extraction unit with nozzle storage and damper	NR-CP	150	5	20914320**
	Extraction unit 920/400 for Stationary vehicles to be used with a Ø100 hose.				20919320
	Extraction unit 920/1500 without balancer for stationary vehicles to be used with a Ø150 hose.				20919120

\*For cars

\*\*For trucks


<sup>1</sup> See table below

Hose type	Specification	Temperature range, °C	Hose fittings in free hose end, distribution hose	Hose fitting on free hose end, inlet hose	Hose connection on reel, distribution hose	Hose connection on reel, inlet hose
NTP		up to 150				
NRCP	Polyester fabric, EPDM/PP coated. Helix in Polyester with EPDM cover. Max bending radius 225mm (inside)	-40 to +150 Deg. C (Intermittent +170 Deg. C)				

## Exhaust rail system 920 for stationary vehicles

	Accessory	Part No
	Exhaust rail 920 L= 2.5 m (8')	20916020*
	Exhaust rail 920 L= 5.0 m (17')	20916120*
	Exhaust rail 920 L= 7.5 m (25')	20916220*
	Exhaust rail 920 L= 10.0 m (33')	20916320*
	Exhaust rail 920 L= 12.5 m (41')	20916420*
	Exhaust rail 920 L= 15.0 m (50')	20916520*
	Exhaust rail 920 L= 17.5 m (57')	20916620*
	Exhaust rail 920 L= 20.0 m (66')	20916720*
	Exhaust rail 920 L= 22.5 m (74')	20916820*
	Exhaust rail 920 L= 25.0 m (82')	20916920*
	Exhaust rail 920 L= 27.5 m (90')	20917020*
	Exhaust rail 920 L= 30.0 m (99')	20917120*
	Exhaust rail 920 L= 32.5 m (106')	20918220*
	Exhaust rail 920 L= 35.0 m (115')	20917220*
	Exhaust rail 920 L= 40.0 m (132')	20917320*
	Exhaust rail 920 L= 45.0 m (148')	20917420*
	Exhaust rail 920 L= 50.0 m (165')	20917520*
	Top outlet Ø200 for 920	20374246
	Balancer trolley 920	20374652**
	Balancer with 8 m cord ø 4 mm, 5-11 kg	20800431**
	Balancer with 8 m cord ø 4 mm, 7-15 kg	20800631**
	Balancer Kit, for 920/400	20373759***

## Exhaust rail system 920 for stationary vehicles

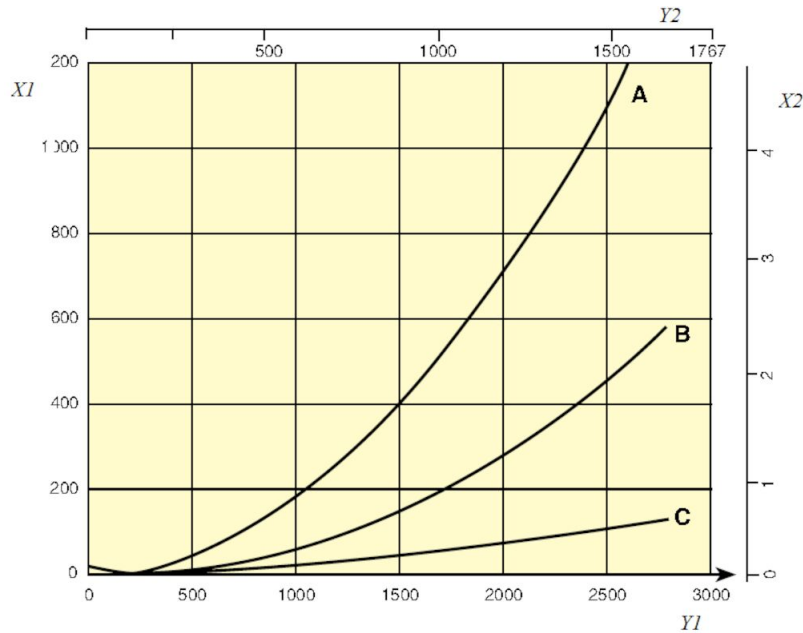
Accessory		Part No
	Safety coupling ø125 (5")	20374264

*\*Complete with suspension parts, joint connectors, rubber seals, end covers and end stops.*

*\*\*For extra long hose*

*\*\*\*For upgrade of 400 extraction unit*

## Exhaust rail system 920 for stationary vehicles



Pressure drop 920 Rail

X1= Pressure, Pa

Y1 = Air flow, m³/h

X2 = Pressure, in. w.g.

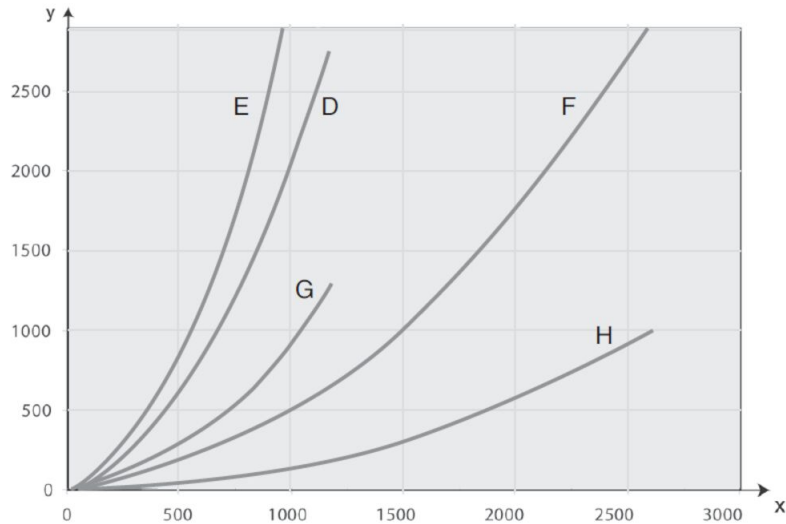
Y2 = Airflow, CFM

A= Top connection, Ø200 mm

B= Side connection, Ø160 mm

C= Rail 920, per metre (Pa/m)

## Exhaust rail system 920 for stationary vehicles



Pressure drop extraction units and trolleys

D = Extraction unit 400, 5 m Ø 100 mm

E = Extraction unit 400, 7.5 m Ø 100 mm

F = Extraction unit 1500, 5 m Ø 150 mm

G = Trolley 400 (without hose)

H = Trolley 1500 (without hose)