

## Trilhos de exaustão 920 para veículos estacionados



Sistema fácil de manusear para todos os tipos de oficinas. Consiste de um sistema básico de Trilho exaustora, que é completado com um kit de extração de gases de escapamento. Eficiência de extração muito alta. Uma unidade de extração pode servir várias baias de serviço. As unidades de extração são fáceis de se mover, graças ao material leve e rodas de rolamento de esferas. Duas unidades 400 podem servir carros com tubos de escape duplos. Desconexão manual dos bocais de escape.












Para a escolha de bocais, favor consultar bocais de exaustão.

- Design compacto e moderno
- Fácil de posicionar e mover à mão
- Damper mecânico automático para controle de fluxo de ar
- De instalação rápida e simples - menos trabalho com tubulações, custo reduzido

Nome do Produto	Trilhos de exaustão 920 para veículos estacionados
Instalação	Interior
Material	Rail - Aluminium. Sealing lips - EPDM rubber. Trolley - Glassfibre Composite
Operating Temperature	Max 150 °C ( 300 °F)
Cor	Grey



## Trilhos de exaustão 920 para veículos estacionados

[image]	Descrição	Tipo de mangueira <sup>1</sup>	Diâmetro, mangueira (mm)	Comprimento da mangueira (m)	[model]
	Trolley 400 extraction unit with nozzle storage and damper	NTP	100	5	20915720*
	Trolley 400 extraction unit with nozzle storage and damper	NR-CP	100	5	20915220*
	Trolley 400 extraction unit with nozzle storage and damper	NTP	100	7,5	20915120*
	Trolley 400 extraction unit with balancer, damper and hose suspension	NTP	100	5	20915620*
	Trolley 400 extraction unit with balancer, damper and hose suspension	NR-CP	100	5	20915520*
	Trolley 400 extraction unit with balancer, damper and hose suspension	NTP	100	7,5	20915020*
	Trolley 1500 extraction unit with balancer, damper and hose suspension	NR-CP	150	5	20914020**
	Trolley 1500 extraction unit with nozzle storage and damper	NR-CP	150	5	20914320**
	Extraction unit 920/400 for Stationary vehicles to be used with a Ø100 hose.				20919320
	Extraction unit 920/400 with balancer for stationary vehicles to be used with a Ø100 hose.				20919220
	Extraction unit 920/1500 without balancer for stationary vehicles to be used with a Ø150 hose.				20919120
	Extraction unit 920/1500 for stationary vehicles to be used with a Ø150 hose.				20919020





\*For cars

\*\*For trucks

<sup>1</sup> See table below

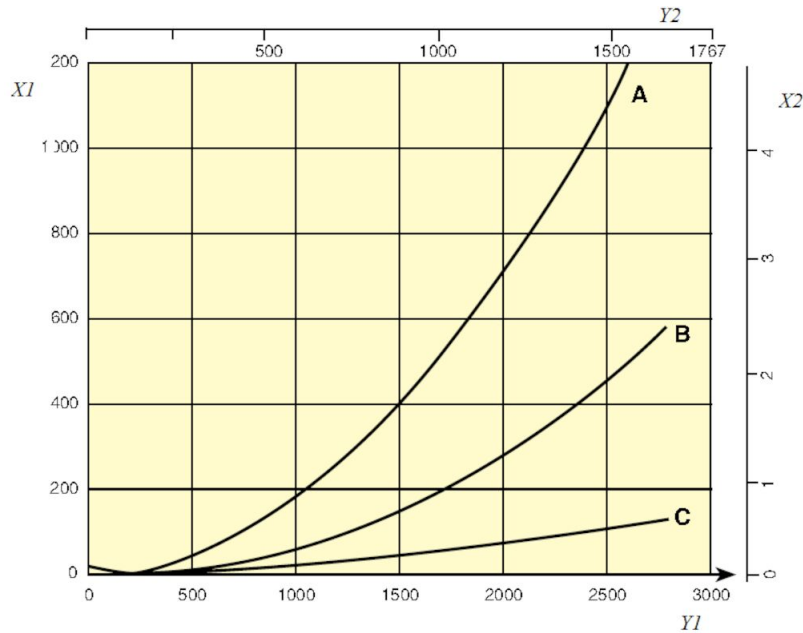
Tipo de mangueira	Especificações	Gama de temperatura, °C	Acopladores na extremidade livre, mangueira de distribuição	Acopladores na extremidade livre, mangueira de entrada	Ligação da mangueira no enrolador, mangueira de distribuição	Ligação da mangueira no enrolador, mangueira de entrada
NTP		up to 150				
NRCP		-40 to +150 Deg. C (Intermittent +170 Deg. C)				

# Trilhos de exaustão 920 para veículos estacionados

	[accessory]	[partno]
	Trilho de exaustão 920 L= 5,0 M (17')	20916120*
	Trilho de exaustão 920 L= 7,5 M (25')	20916220*
	Trilho de exaustão 920 L= 10,0 M (33')	20916320*
	Trilho de exaustão 920 L= 12,5 M (41')	20916420*
	Trilho de exaustão 920 L= 15,0 M (50')	20916520*
	Trilho de exaustão 920 L= 17,5 M (57')	20916620*
	Trilho de exaustão 920 L= 20,0 M (66')	20916720*
	Trilho de exaustão 920 L= 22,5 M (74')	20916820*
	Trilho de exaustão 920 L= 25,0M (82')	20916920*
	Trilho de exaustão 920 L= 27,5 M (90')	20917020*
	Trilho de exaustão 920 L= 30,0M (99')	20917120*
	Trilho de exaustão 920 L= 32,5m (106')	20918220*
	Trilho de exaustão 920 L= 35,0M (115')	20917220*
	Exhaust rail 920 L= 40,0 m (132')	20917320*
	Exhaust rail 920 L= 45,0 m (148')	20917420*
	Exhaust rail 920 L= 50,0 m (165')	20917520*

\*Complete with suspension parts, joint connectors, rubber seals, end covers and end stops.

## Trilhos de exaustão 920 para veículos estacionados



Pressure drop 920 Rail

X1 = Pressure, Pa

Y1 = Air flow, m<sup>3</sup>/h

X2 = Pressure, in. w.g.

Y2 = Airflow, CFM

A = Top connection, Ø200 mm

B = Side connection, Ø160 mm

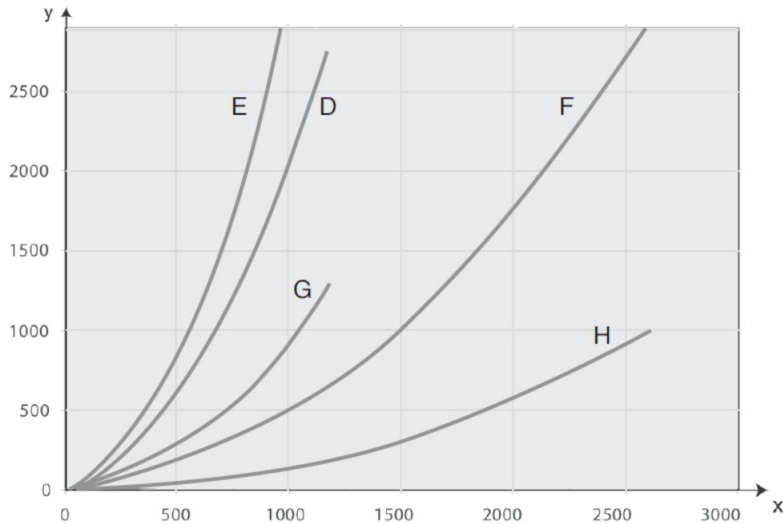
C = Rail 920, per metre (Pa/m)

Airflow recommendations:

Car: 400 - 600 m<sup>3</sup>/h (235 - 350 cfm)

Truck/Bus: 1000 - 1200 m<sup>3</sup>/h (590 - 700 cfm)

## Trilhos de exaustão 920 para veículos estacionados



Pressure drop extraction units and trolleys

D = Extraction unit 400, 5 m Ø 100 mm

E = Extraction unit 400, 7.5 m Ø 100 mm

F = Extraction unit 1500, 5 m Ø 150 mm

G = Trolley 400 (without hose)

H = Trolley 1500 (without hose)

Airflow recommendations:

Car: 400 - 600 m<sup>3</sup>/h ( 235 - 350 cfm)

Truck /Bus: 1000 - 1200 m<sup>3</sup>/h ( 590 - 700 cfm)

Max design airflow / trolley:

Trolley 400: 400 m<sup>3</sup>/h ( 235 cfm)

Trolley 1500: 1500 m<sup>3</sup>/h ( 885 cfm)