

## 用于静止车辆的920尾气导轨系统



方便操作所有类型车间的系统。包括配有抽排工具的基本的滑轨系统。抽排效率非常高。一个抽排装置可满足数个工位的作业要求。因使用了轻质材料和滚珠轮子，抽排装置易于移动。两个400装置用双排气管为汽车提供作业。手动断开排气喷嘴。

如何选择喷嘴，请见排气喷嘴部分。

紧凑,现代化设计  
便于手动定位

移动用于气流控制的自动调风门  
安装快速、简单-管道安装工作更少，可降低成本

品名	用于静止车辆的920尾气导轨系统
安装	室内
材料	Rail – Aluminium. Sealing lips – EPDM rubber. Trolley – Glassfibre Composite
工作温度	Max 150 ° C ( 300 ° F)
颜色	Grey



## 用于静止车辆的920尾气导轨系统

[image]	产品名称	软管类型	软管直径 (毫米)	软管长度 (米)	产品编号
	小车 400 抽吸装置, 带吸嘴储存器与风门	NTP	100	5	20915720*
	小车 400 抽吸装置, 带吸嘴储存器与风门	NR-CP	100	5	20915220*
	小车 400 抽吸装置, 带吸嘴储存器与风门	NTP	100	7,5	20915120*
	小车 400 抽吸装置, 带平衡器、风门和软管悬挂件。	NTP	100	5	20915620*
	小车 400 抽吸装置, 带平衡器、风门和软管悬挂件。	NR-CP	100	5	20915520*
	小车 400 抽吸装置, 带平衡器、风门和软管悬挂件。	NTP	100	7,5	20915020*
	小车 1500 抽吸装置, 带平衡器、风门和软管悬挂件。	NR-CP	150	5	20914020**
	小车 1500 抽吸装置, 带吸嘴储存器与风门	NR-CP	150	5	20914320**
	Extraction unit 920/400 for Stationary vehicles to be used with a 100 hose.				20919320
	Extraction unit 920/400 with balancer for stationary vehicles to be used with a 100 hose.				20919220
	Extraction unit 920/1500 without balancer for stationary vehicles to be used with a 150 hose.				20919120
	Extraction unit 920/1500 for stationary vehicles to be used with a 150 hose.				20919020















\*适合小汽车

\*\*适合卡车


See table below

软管类型	描述	温度范围, 摄氏度	管尾接头, 输送软管	管尾接头, 进气软管	盘管器, 输送软管	盘管器, 进气软管
NTP		up to 150				
NRCP	涤纶织物, EPDM / PP 包覆。在 EPDM 聚酯螺旋盖。最大弯曲半径应 (内部)	-40 to +150 Deg. C (Intermittent +170 Deg. C)				

## 用于静止车辆的920尾气导轨系统

附件		产品编号
	尾气抽排导轨 920 L= 2.5 m (8)	20916020*
	尾气抽排导轨 920 L= 5.0 m (17)	20916120*
	尾气抽排导轨 920 L= 7.5 m (25)	20916220*
	尾气抽排导轨 920 L= 10.0 m (33)	20916320*
	尾气抽排导轨 920 L= 12.5 m (41)	20916420*
	尾气抽排导轨 920 L= 15.0 m (50)	20916520*
	尾气抽排导轨 920 L= 17.5 m (57)	20916620*
	尾气抽排导轨 920 L= 20.0 m (66)	20916720*
	尾气抽排导轨 920 L= 22.5 m (74)	20916820*
	尾气抽排导轨 920 L= 25.0 m (82)	20916920*
	尾气抽排导轨 920 L= 27.5 m (90)	20917020*
	尾气抽排导轨 920 L= 30.0 m (99)	20917120*
	尾气抽排导轨 920 L= 32.5 m (106')	20918220*
	尾气抽排导轨 920 L= 35.0 m (115)	20917220*
	尾气抽排导轨 920 L= 40.0 m (132)	20917320*
	尾气抽排导轨 920 L= 45.0 m (148)	20917420*
	尾气抽排导轨 920 L= 50.0 m (165)	20917520*
	顶部出风口 200用于 920	20374246
	Balancer trolley 920	20374652**
	平衡器带8m悬绳, 直径4mm	20800431**
	平衡器带8m悬绳, 直径4mm	20800631**
	平衡器用于920/400	20373759***

## 用于静止车辆的920尾气导轨系统

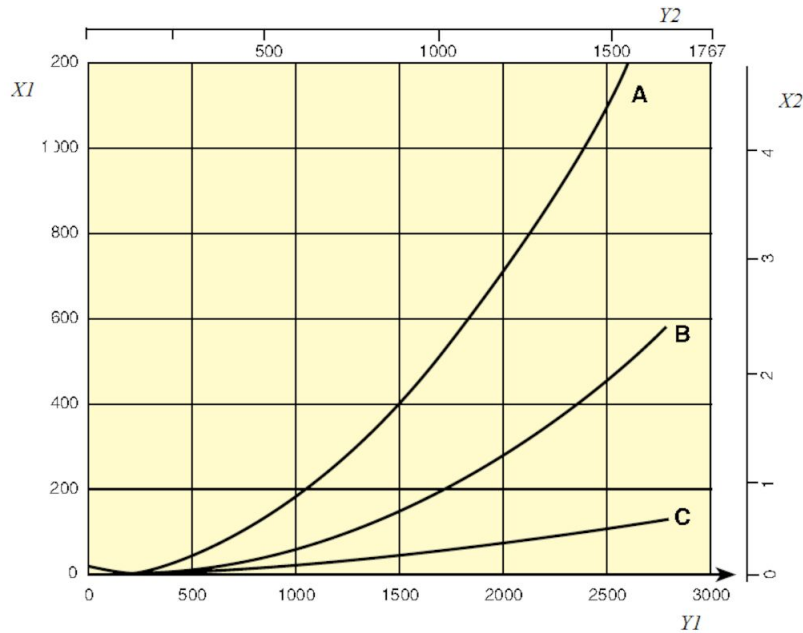
附件		产品编号
	安全接头 125 (5")	20374264

\*套件含悬挂零件、连接接头、橡胶密封、端盖与端止停器。

\*\*超长软管

\*\*\*For upgrade of 400 extraction unit

## 用于静止车辆的920尾气导轨系统



Pressure drop 920 Rail

X1= Pressure, Pa

Y1 = Air flow, m<sup>3</sup>/h

X2 = Pressure, in. w.g.

Y2 = Airflow, CFM

A= Top connection, 200 mm

B= Side connection, 160 mm

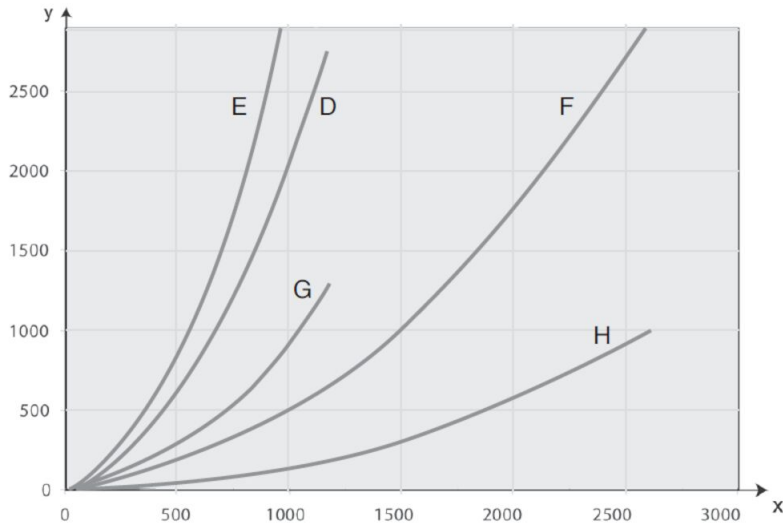
C= Rail 920, per metre (Pa/m)

Airflow recommendations:

Car: 400 – 600 m/h (235 – 350 cfm)

Truck/Bus: 1000 – 1200 m/h (590 – 700 cfm)

## 用于静止车辆的920尾气导轨系统



Pressure drop extraction units and trolleys

D = Extraction unit 400, 5 m 100 mm

E = Extraction unit 400, 7.5 m 100 mm

F = Extraction unit 1500, 5 m 150 mm

G = Trolley 400 (without hose)

H = Trolley 1500 (without hose)

Airflow recommendations:

Car: 400 – 600 m/h ( 235 – 350 cfm)

Truck /Bus: 1000 – 1200 m/h ( 590 – 700 cfm)

Max design airflow / trolley:

Trolley 400: 400 m/h ( 235 cfm)

Trolley 1500: 1500 m/h ( 885 cfm)