

NCF风机

尼的曼NCF风机使用直驱电机，这意味着操作安全、成本低廉。安装节能NCF风机及我们的其他尼的曼产品可节省时间，降低能源成本。这是一款离心风机，用于所有类型的工业工序和通风系统，安装于室内及室外。风机按标准配有减震器。






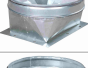
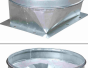
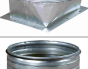

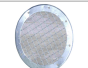
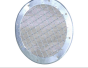
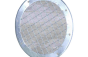
品名	NCF风机
保护等级	IP 55
安装	室外, 室内
材料	金属板, 涂为灰色, RAL 7045
环境温度范围	-30 to +40 ° C (22 F to 104 F)
工作温度	Max. 60 ° C
频率 (Hz)	50
电源相数	3



NCF风机

[image]	产品名称	电压 (V)	安培数 (安)	Noise level (dB(A))	重量 (公斤)	功率 (kW)	产品编号
	风机 NCF120/15	230/400	24,0/13,8	85 db(A) at 10000 m/h	123	7,5	14550228
	风机 NCF30/15	230/400	7,9 / 4,6	69 db(A) at 2500 m/h	67	2,2	14550128
	风机 NCF30/25	230/400	13,6/7,8	74 db(A) at 4000 m/h	105	4	14550328
	风机 NCF40/25	230/400	17,9/10,3	75 db(A) at 4000 m/h	110	5,5	14550428
	风机 NCF50/25	230/400	17,9/10,3	78 db(A) at 3500 m/h	112	5,5	14550528
	FAN NCF80/20	230/400	24,0/13,8	77 db(A) at 6000 m/h	150	7,5	14550628
	FAN NCF120/25	230/400	46,1/26,5	82 db(A) at 8000 m/h	232	15	14550728
	FAN NCF160/25	230/400	56,5/32,5	84 db(A) at 10000 m/h	292	18,5	14550828
	FAN NCF120/15	400/690	13,8/8,0	85 db(A) at 10000 m/h	123	7,5	14550928
	FAN NCF30/25	400/690	7,8/4,5	74 db(A) at 4000 m/h	105	4	14551028
	FAN NCF40/25	400/690	10,3/6,0	75 db(A) at 4000 m/h	110	5,5	14551128
	FAN NCF50/25	400/690	10,3/6,0	78 db(A) at 3500 m/h	112	5,5	14551228
	FAN NCF80/20	400/690	13,8/8,0	77 db(A) at 6000 m/h	150	7,5	14551328
	FAN NCF120/25	400/690	26,5/15,3	82 db(A) at 8000 m/h	232	15	14551428
	FAN NCF160/25	400/690	32,5/18,8	84 db(A) at 10000 m/h	292	18,5	14551528

NCF风机

附件		产品编号
	进风口转接器, d250, 30/15, 40/25, 5	14374438
	进风口转接器, d315, 30/25	14374439
	进风口转接器, d400, 80/20, 120/25	14374440
	进风口转接器 d500, 120/15, 160/25	14374441
	出风口转接器, 288x205, d315, 30/15	14374442
	出风口转接器, 322x229, d400, 30/25	14374443
	出风口转接器, 361x256, d400, 80/20	14374444
	出风口转接器, 453x322, d500, 120/15, 160/25	14374445
	出风口转接器, 256x183, d250, 50/25	14374446
	进风口活动转接器, d250, 30/15, 40/2	14374447
	进风口活动转接器, d315, 30/25	14374448
	进风口活动转接器, d400, 80/20, 120/	14374449
	进风口活动转接器, d500, 120/15, 160	14374450
	出风口活动转接器, 288x205, d315, 30	14374451
	出风口活动转接器, 322x229, d400, 30	14374452
	出风口活动转接器, 361x256, d400, 80	14374453
	出风口活动转接器, 453x322, d500, 12	14374454
	出风口活动转接器, 256x183, d250, 50	14374455
	进风口安全网罩, d250, 30/15, 40/25	14374456
	进风口安全网罩, d315, 30/25	14374457
	进风口安全网罩, d400, 80/20, 120/25	14374458
	进风口安全网罩, d500, 120/15, 160/2	14374459

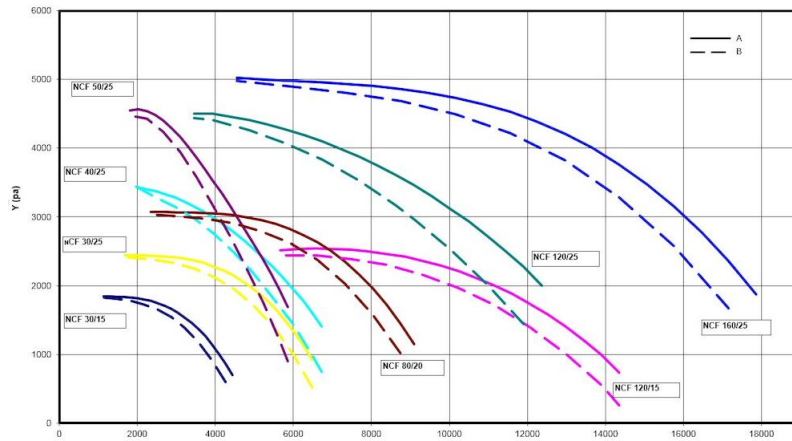
NCF风机

	附件	产品编号
	出风口安全网罩, 30/15, 40/25	14374460
	出风口安全网罩, 30/25	14374461
	出风口安全网罩, 80/20, 120/25	14374462
	出风口安全网罩, 120/15, 160/25	14374463
	出风口安全网罩, 50/25	14374464
	减震器AM 40, 1套	14374624
	减震器AM 30, 1套	14374628
	减震器AM 25, 1套	14374629
	减震器AM 50, 1套	14374630
	进口转接器 d250,30/20	14375076
	Fan starter 5.5kW (2,2 – 5,5 kW motor power)	14514837
	Fan starter 11kW (4,0 – 11,0 kW motor power)	14514937
	Fan starter 18.5kW (15,0 – 18,5 kW motor power)	14515037
	Fan starter 22kW (18,5 – 22,0 kW motor power)	14515537
	风机变频器, 适合 5.5 kW 电机电源	14522037*
	风机变频器, 适合 7.5 kW 电机电源	14522137**
	风机变频器, 适合 11 kW 电机电源	14522237**
	风机变频器, 适合 15 kW 电机电源	14522637**
	风机变频器, 适合 18.5 kW 电机电源	14525137**
	风机变频器, 适合 22 kW 电机电源	14525237**

*压力传感器 2000 Pa

**压力传感器 5000 Pa

NCF风机

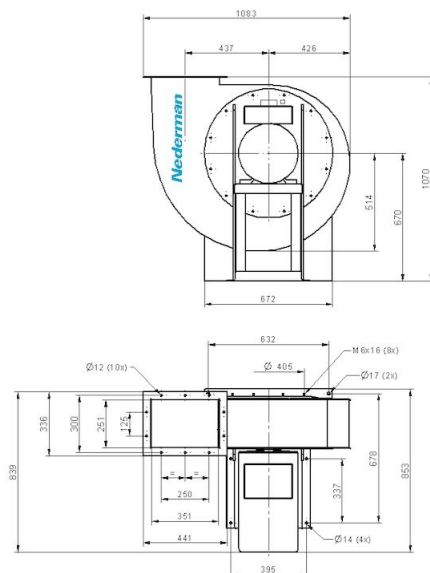


Y = Pressure drop

X = Air flow

A = Total pressure

B = Static pressure

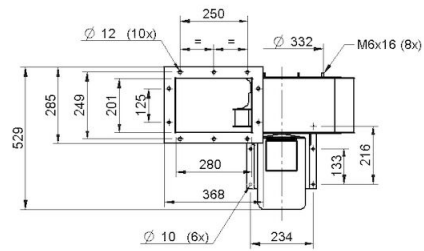
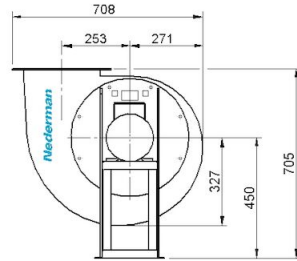


Fan NCF 120/25

Duct inlet diameter 400 mm

Duct outlet diameter 400 mm

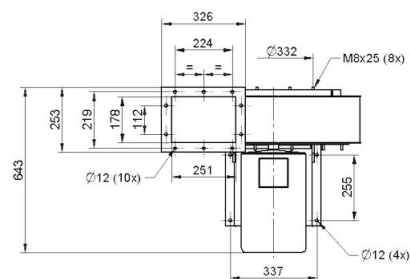
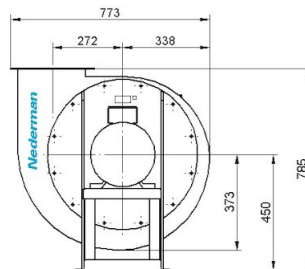
NCF风机



NCF 30/15

Duct inlet diameter 250 mm

Duct outlet diameter 315 mm

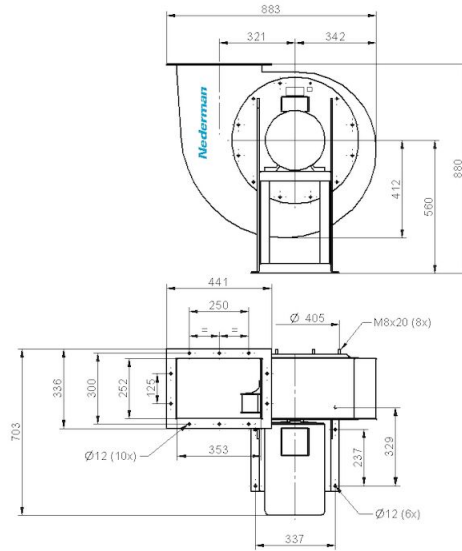


NCF 50/25

Duct inlet diameter 250 mm

Duct outlet diameter 250 mm

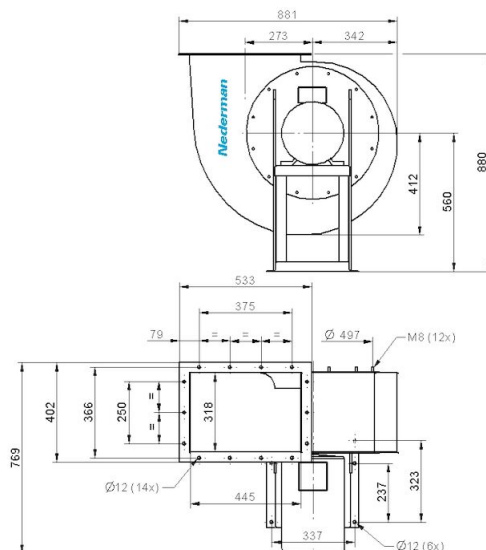
NCF风机



NCF 80/20

Duct inlet diameter 400 mm

Duct outlet diameter 400 mm

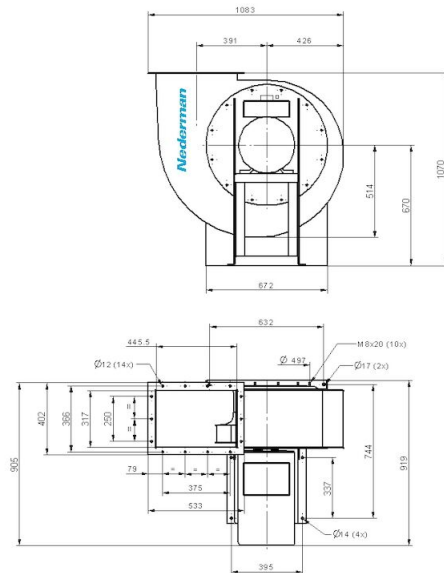


NCF 120/15

Duct inlet diameter 500 mm

Duct outlet diameter 500 mm

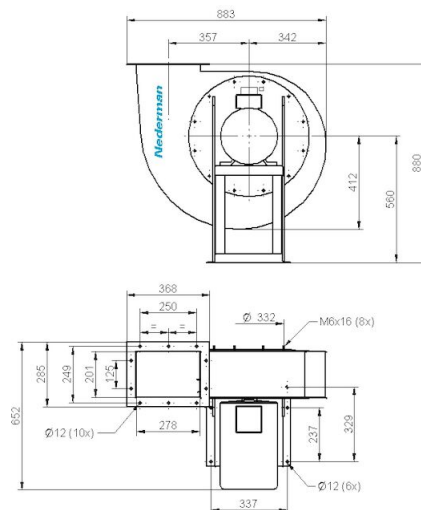
NCF风机



NCF 160/25

Duct inlet diameter 500 mm

Duct outlet diameter 500 mm

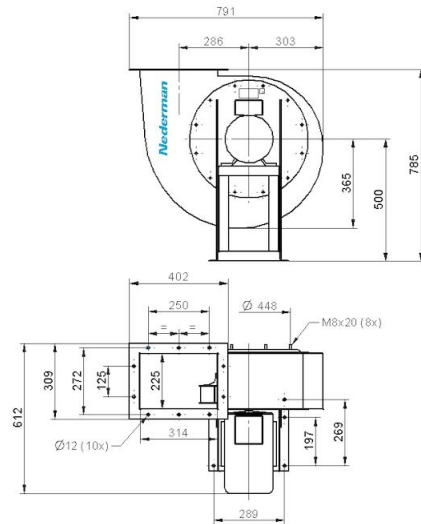


NCF 40/25

Duct inlet diameter 250 mm

Duct outlet diameter 315 mm

NCF风机



NCF 30/25

Duct inlet diameter 315 mm

Duct outlet diameter 400 mm