

Air driven ATEX series

115A EX - NE32, S50, ATEX Ex II 3GD

42211500

Original manual

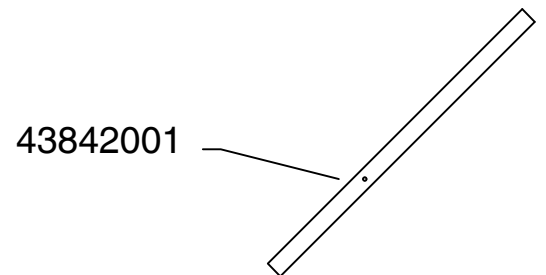
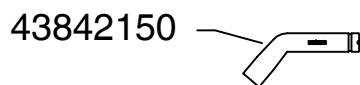
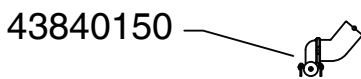
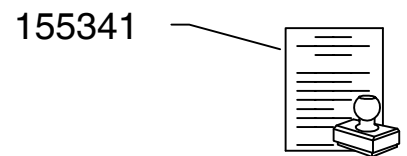
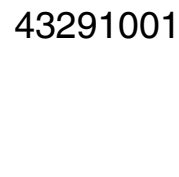
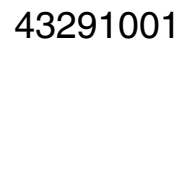
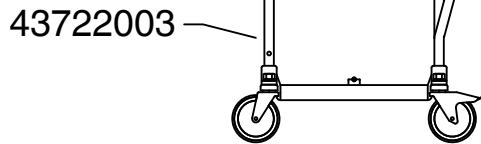
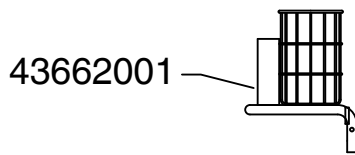
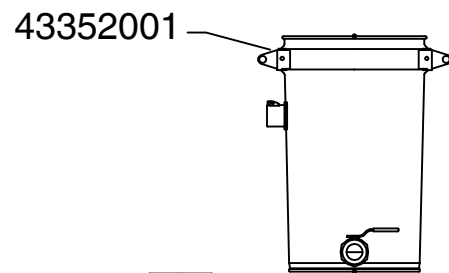
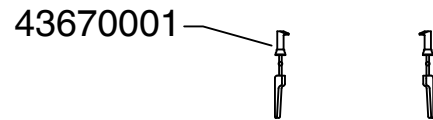
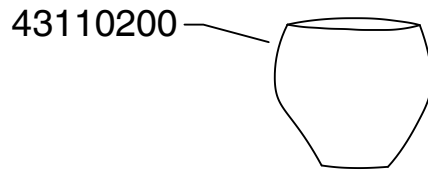
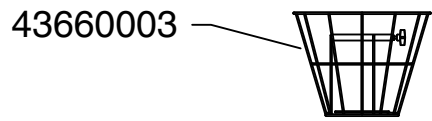
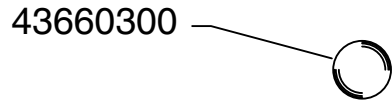
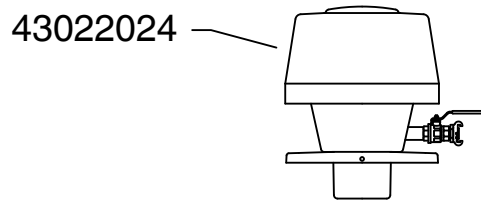
EN MODEL SPECIFICATION AND SPARE PARTS

Model Specification

Description: 115A Ex - NE32, S50, ATEX Ex II 3 GD

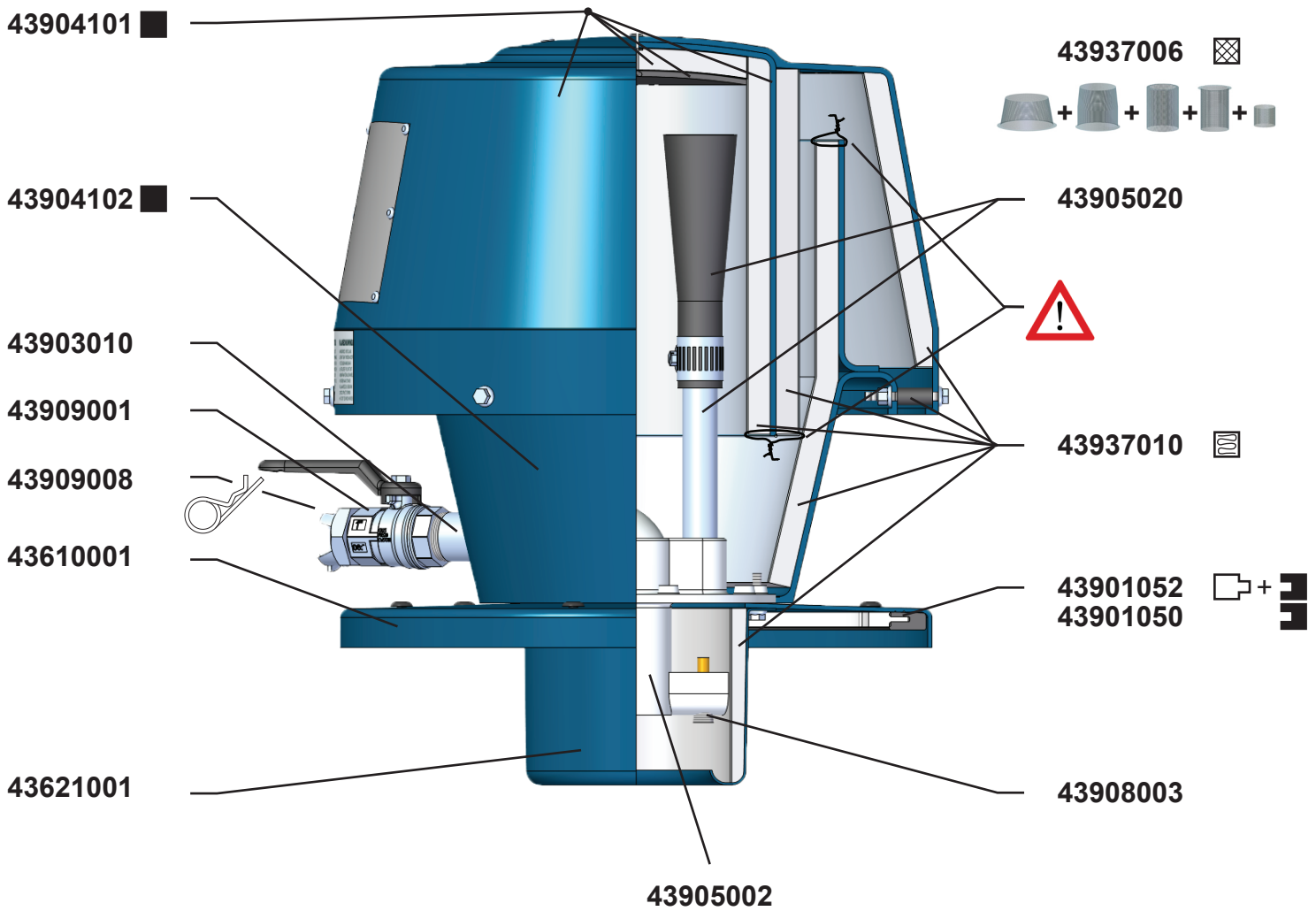
Model: 42211500

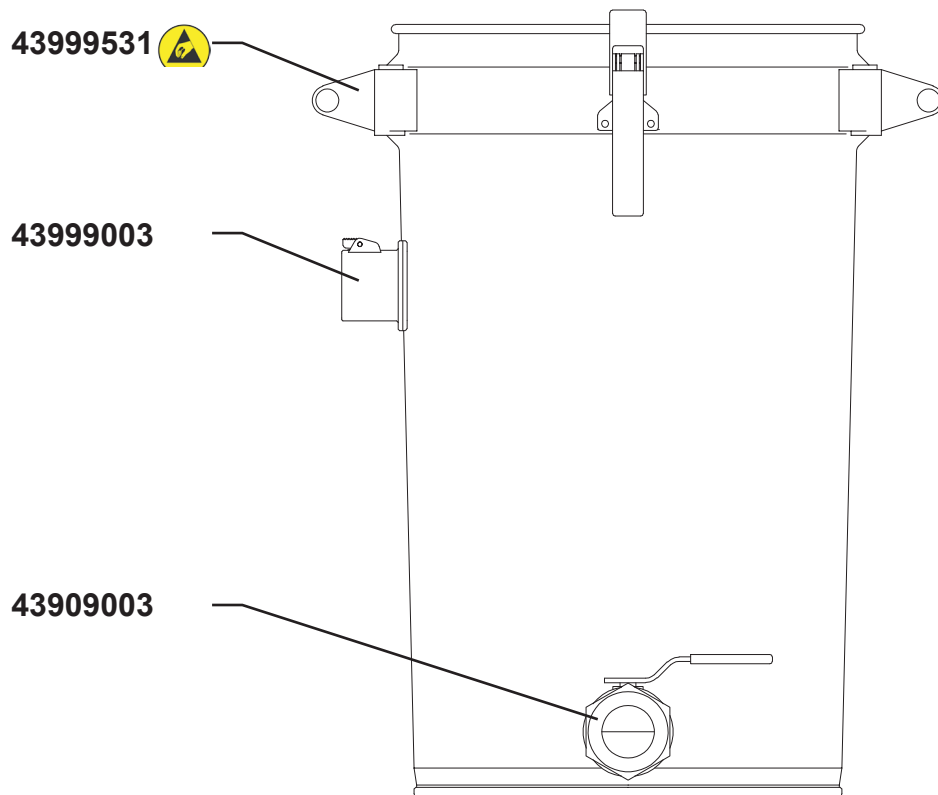
Code no.	Description	Qty.	Page
43022024	NE32, S50 antistatic	1	4
43110200	Filter bag S50 antistatic	1	-
43291001	Earthingkit	2	-
43352001	Container S50 A4 inlet d51	1	5
43660003	Basket S50 A4	1	6
43660300	Float ball S50/200	1	-
43662001	Accessory basket S50	1	-
43670001	Fastener complete	1	-
43722003	Trolley S50 tippable antistatic	1	7
43812103	Hose PE/C-51 L=7,5m	1	-
43840150	Floor suct head d51/500	1	8
43842001	Suction pipe d51 PEHD-el 1m	1	-
43842150	Pipe bend d51 antistatic	1	-
155341	Test protocol 115A Ex 422115XX	1	-





MAX 8 bar







43908004



43660003

