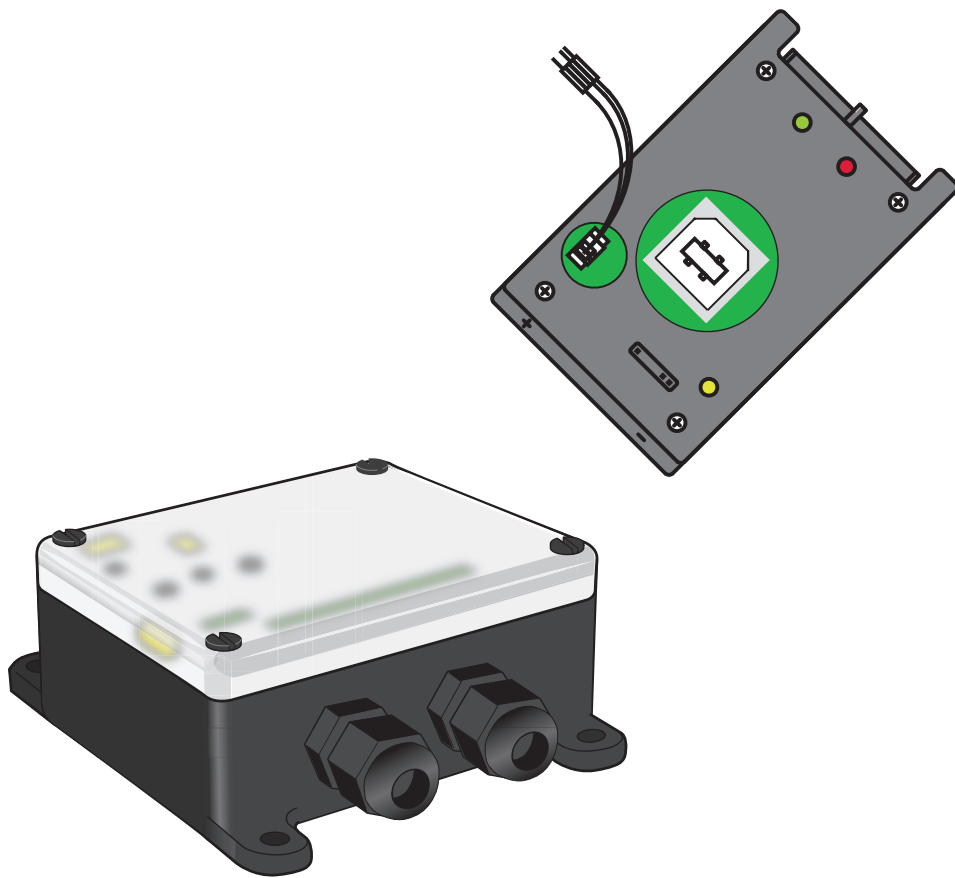


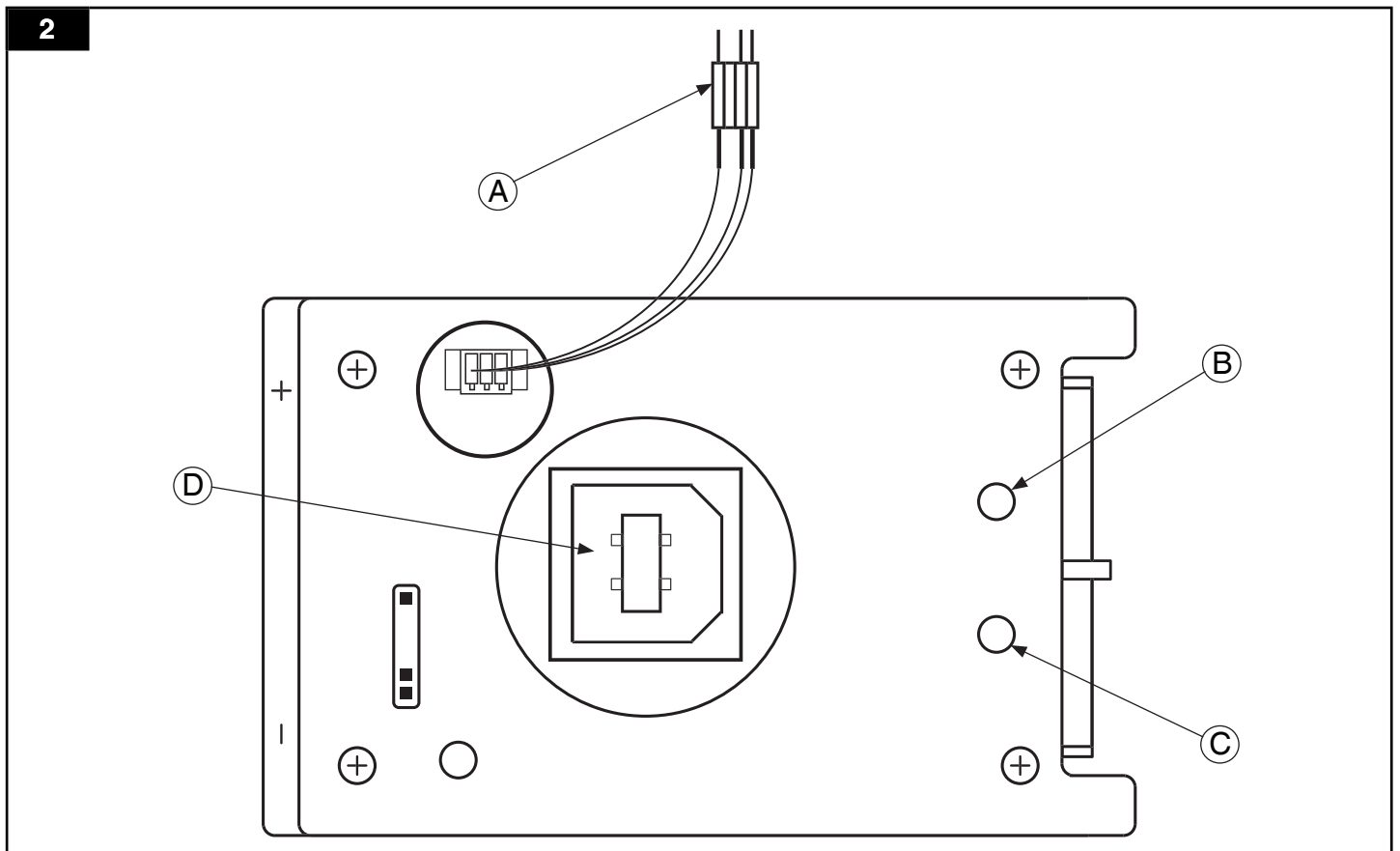
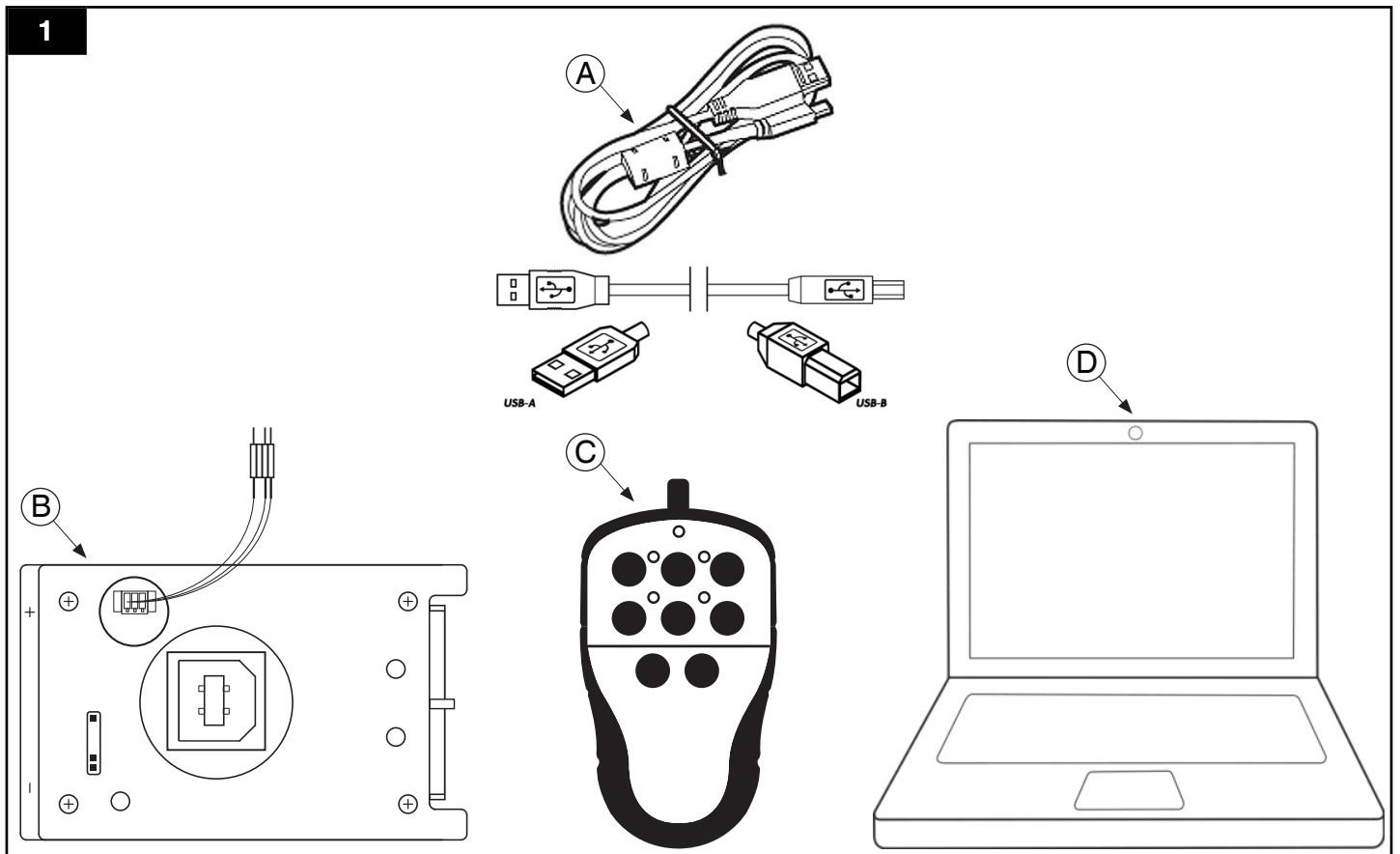
Control Equipment
**Fan Start/Stop Device
Program Kit D2-3**

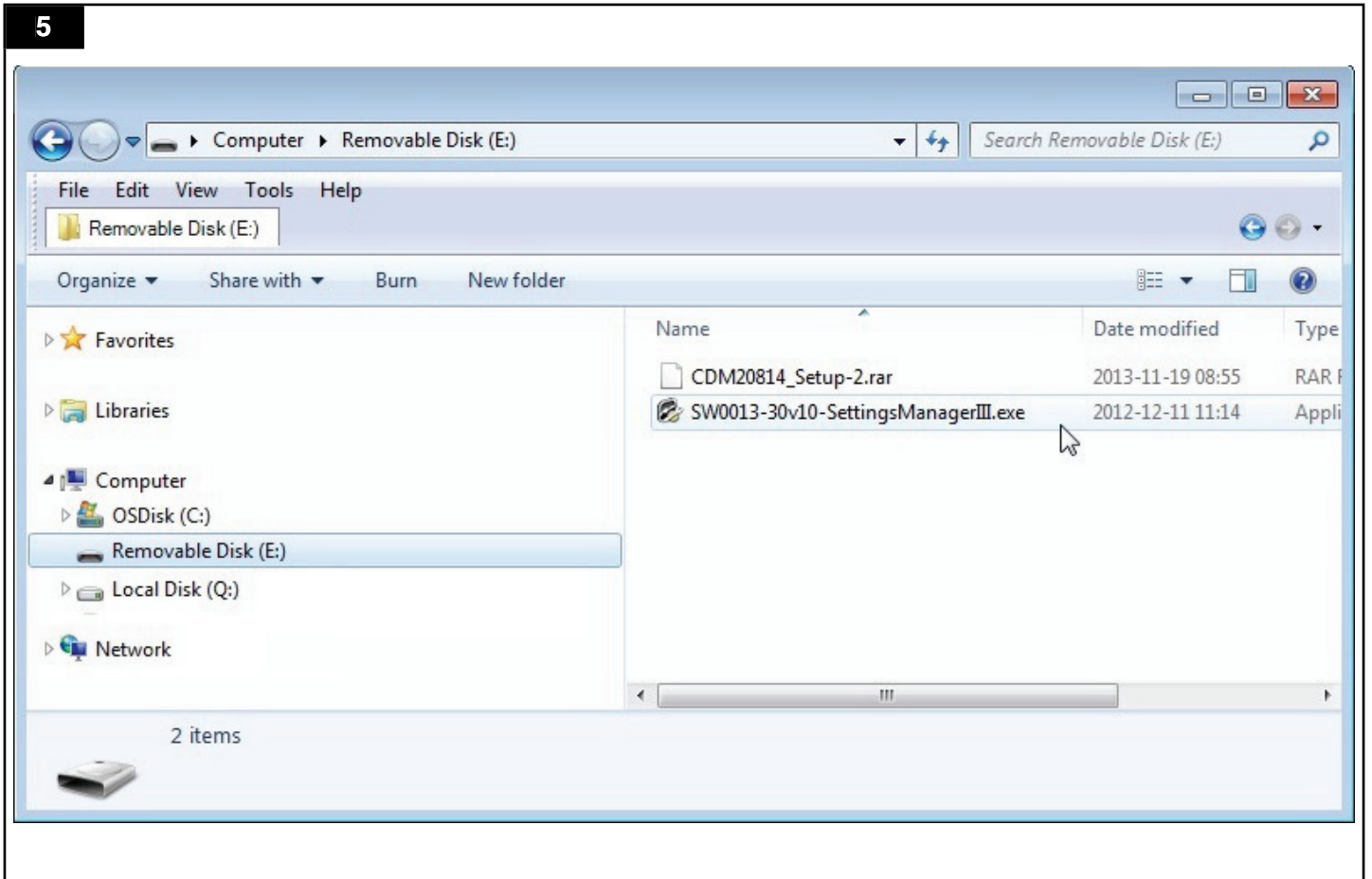
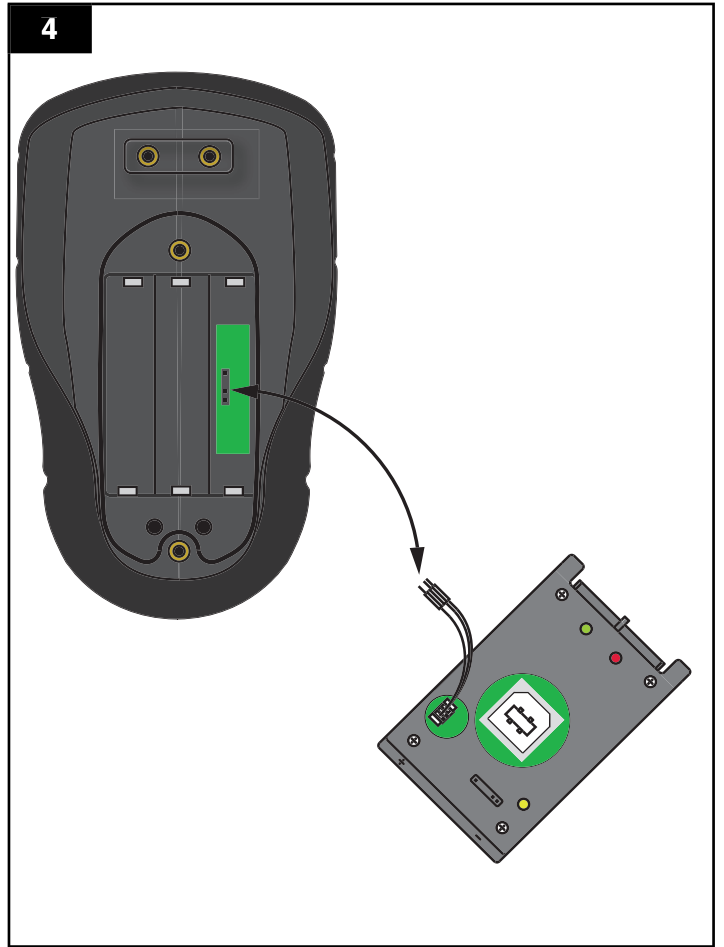
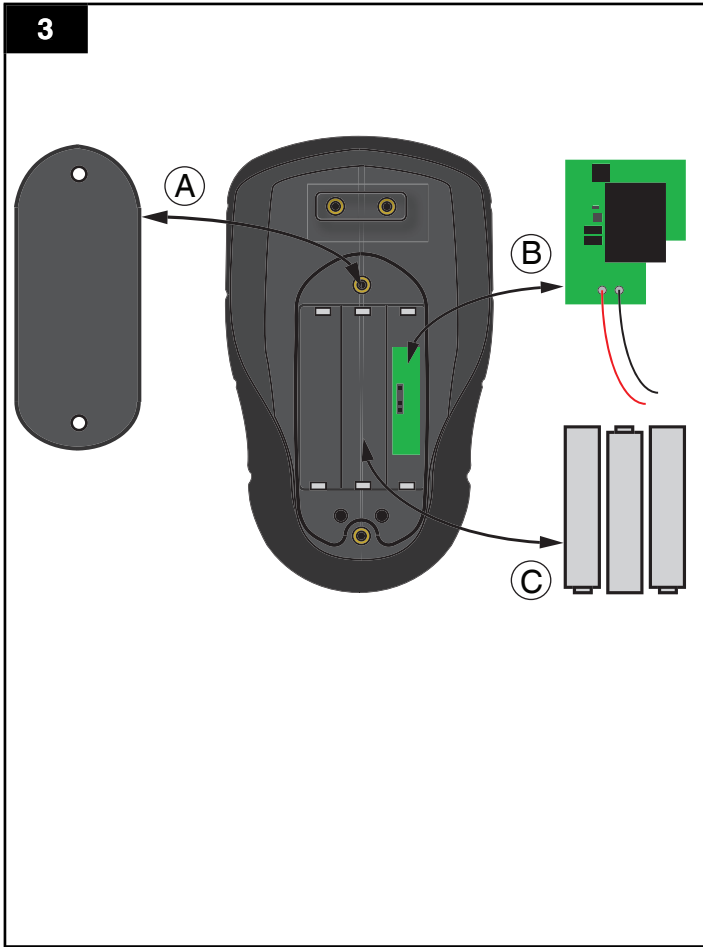


Original instruction manual
EN INSTRUCTION MANUAL

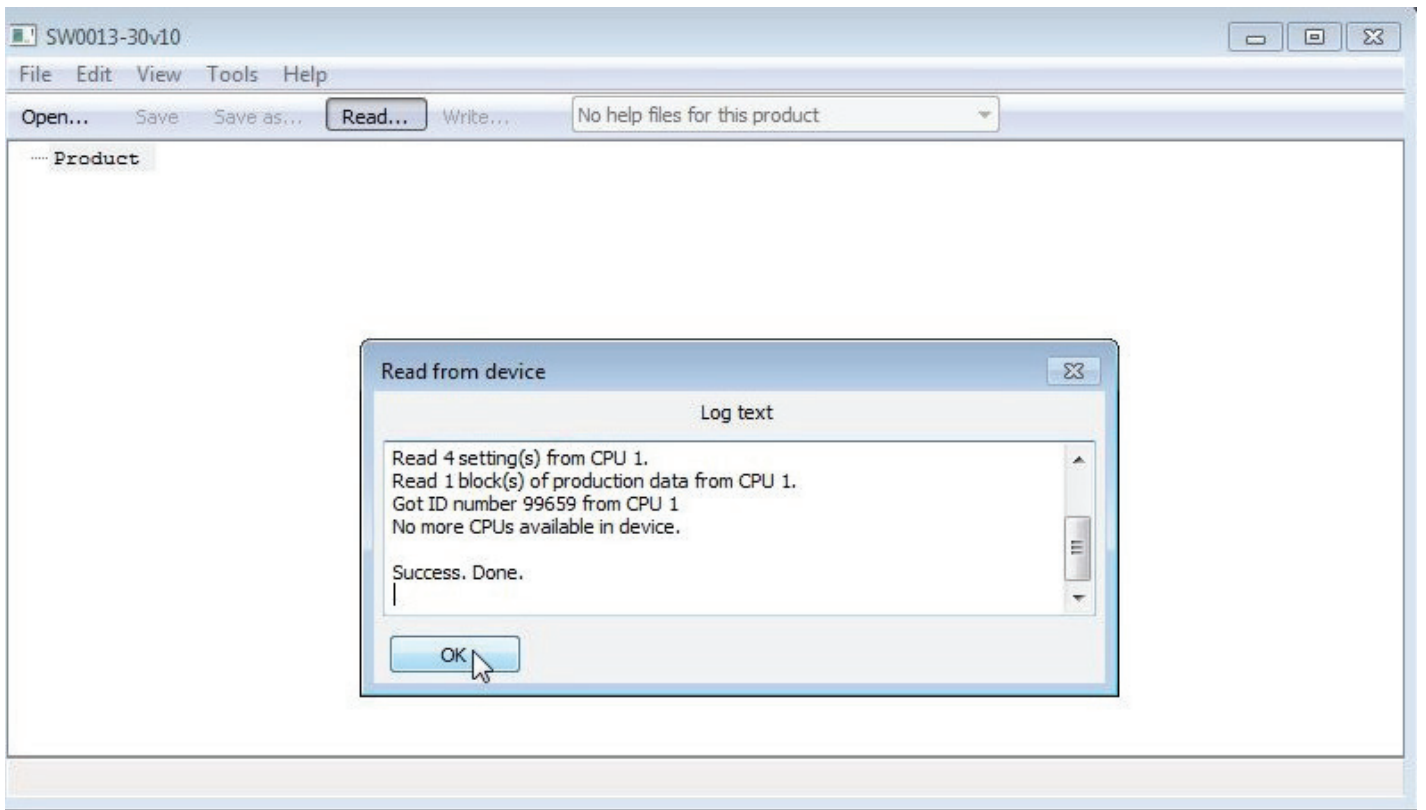
Figures	3
English	7

Figures

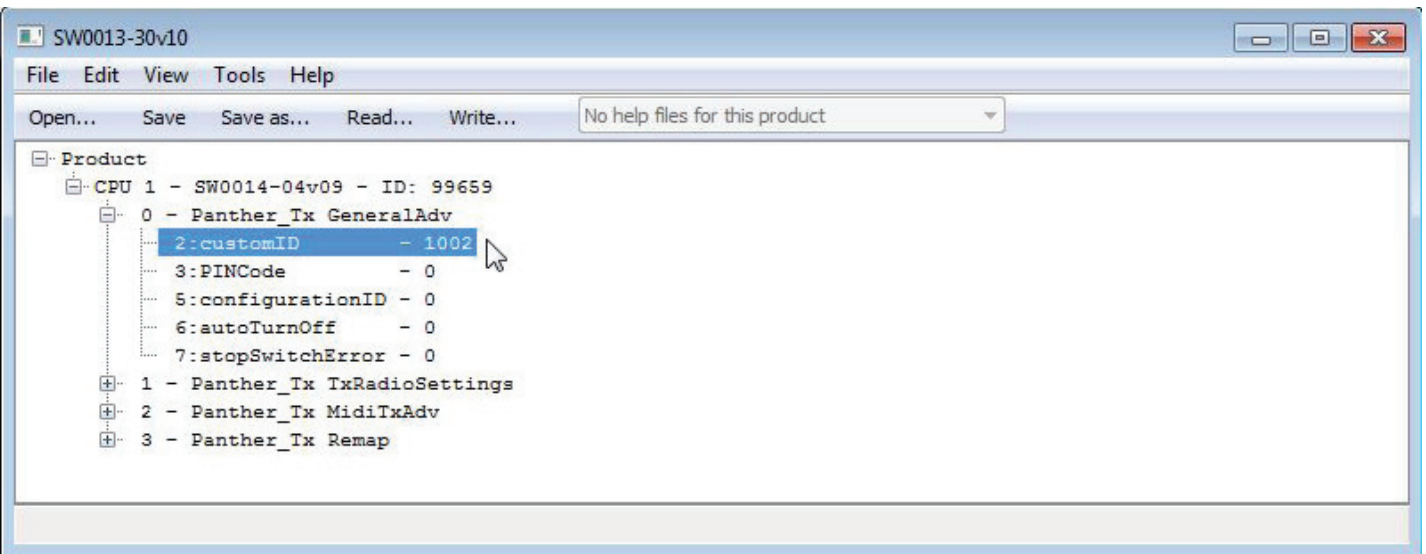




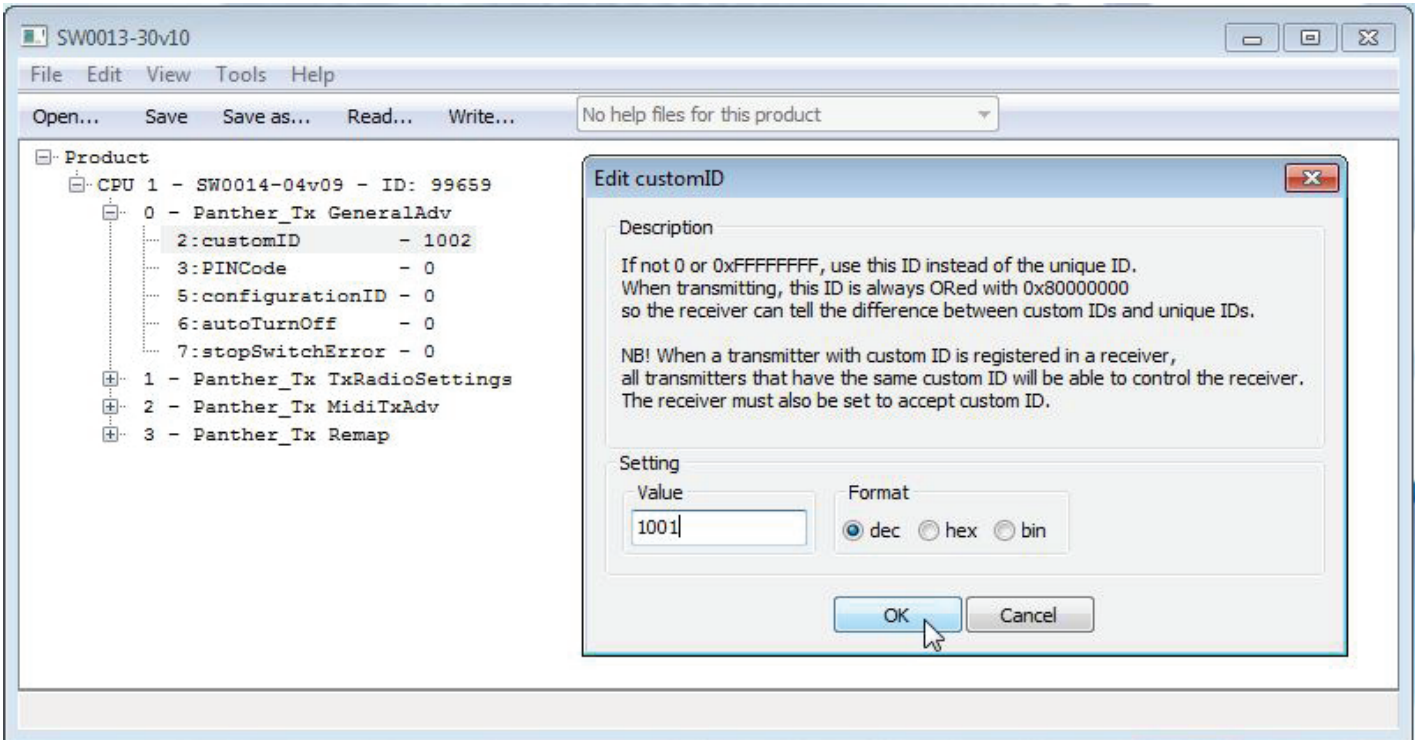
6



7



8



9

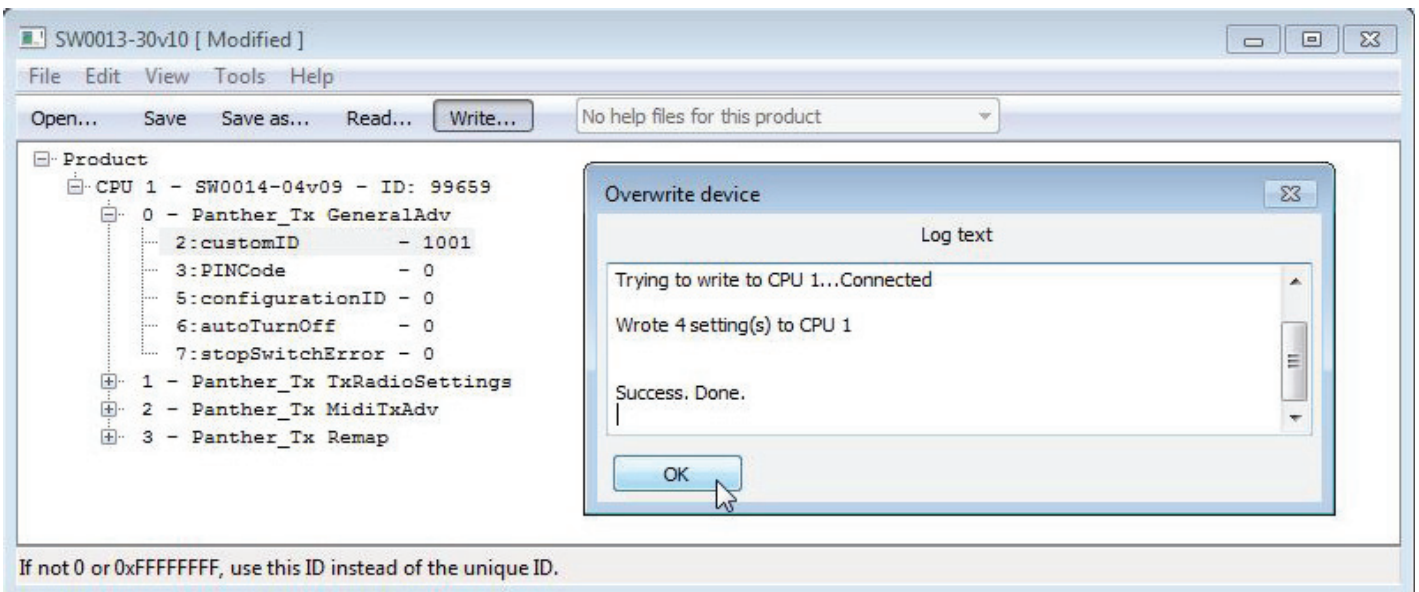


Table of contents

1	Preface.....	7
2	Notices.....	7
3	Description	8
3.1	Intended use.....	8
3.2	Main components	8
3.2.1	Description of Programming Kit D2-3	8
3.2.2	Description of the programming device	8
4	Programming.....	8
4.1	Prepare the Programming Kit D2-3.....	8
4.2	Reprogram a transmitter.....	9
4.3	Reprogram additional transmitters.....	9
5	Recycling	10
6	Spare parts.....	10

1 Preface

Read this manual carefully before installation, use and service of this product. Replace the manual immediately if lost. Nederman reserves the right, without previous notice, to modify and improve its products including documentation.

This product is designed to meet the requirements of relevant EC directives. To maintain this status, all installation, maintenance and repair is to be done by qualified personnel using only original spare parts. Contact the nearest authorized distributor or Nederman for advice on technical service and obtaining spare parts. If there are any damaged or missing parts when the product is delivered, notify the carrier and the local Nederman representative immediately.

2 Notices

This document contains important information that is presented either as a warning, caution or note. See the following examples:

**WARNING! Type of injury.**

Warnings indicate a potential hazard to the health and safety of personnel, and how that hazard may be avoided.

Caution! Type of Risk.

Cautions indicate a potential hazard to the product but not to personnel, and how that hazard may be avoided.

NOTE! Notes contain other information that is of special interest to the user.

3 Description

3.1 Intended use

This product is designed to reprogram factory set transmitters that are used with the Fan Start/Stop Device, which is used together with Nederman exhaust extraction systems such as MagnaTrack, MagnaStack or MagnaRail.

In a standard Nederman installation, all transmitters from the factory are programmed to send a Nederman unique signal to the receiver to start the fan for that system. However, if a vehicle from another Nederman installation comes within 50 meters of the receiver, the transmitter in that vehicle will also send a signal to the receiver, which will start the fan. The Programming Kit D2-3 makes it possible to reprogram transmitters to only start the intended receiver, in order to avoid different systems accidentally starting one another.

3.2 Main components

- Programming Kit D2-3, see Figure 1(A), 1(B) and 1(C), and Section '3.2.1' below.
- Transmitter (Separate sales part), see Figure 3.
- Computer, see Figure 1(D).

3.2.1 Description of Programming Kit D2-3

- USB cable, see Figure 1(A).
- Programming device, see Figure 1(B) and Section '3.2.2' below.
- USB memory stick, see Figure 1(C).

3.2.2 Description of the programming device

- Programming device cable, see Figure 2(A).
- LED (Green), see Figure 2(B).
- LED (Red), see Figure 2(C).
- USB-B slot, see Figure 2(D).

4 Programming



WARNING! Risk of electric shock.

Work with electric equipment is to be carried out by a qualified electrician.



WARNING! Risk of personal injuries.

Before programming the unit, ensure that the input power supply to the Fan Start/Stop Device has been off for at least 5 minutes.

To program a transmitter, first prepare the Programming Kit D2-3 by connecting it to a computer to install its driver. When the programming kit's driver is properly installed, the computer and programming kit can be connected to a transmitter for programming.

4.1 Prepare the Programming Kit D2-3

Follow the procedure below to prepare the Programming Kit D2-3:

1. Connect the USB-A end of the USB cable to a computer, see Figure 1(A) and 1(D), and the USB-B end to the programming device, see Figures 1(A) and 2(D).
2. The driver is installed to the computer and the programming device is ready when the LED (Green) is lit, see Figure 2(B).

NOTE! If the driver is not correctly installed, the LED (Red) is lit, see Figure 2(C). Go to step 3 below.

3. Connect the USB memory stick to the computer, see Figures 1(C) and 1(D).
4. Open the USB memory stick to show its files and folders, see Figure 5.

5. Double click to open the driver, 'file.rar' (for example 'CDM20814_Setup-2.rar'), and follow its instructions to install the driver. When the programming device is ready, the LED (Green) is lit, see Figure 2(B).

4.2 Reprogram a transmitter

Follow the procedure below to reprogram a transmitter using the Programming Kit D2-3:

1. Unscrew and remove cover from the back of a transmitter, see Figure 3(A):
 - Remove the PCB from standard transmitter, see Figure 3(B).
 - Remove batteries from hand held transmitter, see Figure 3(C).
2. Connect the programming device cable to the transmitter, see Figures 2(A) and 4.
3. Connect the USB-A end of the USB cable to a computer, see Figure 1(A) and 1(D), and the USB-B end to the programming device, see Figure 2(D).
4. When the programming device's LED (Green) is lit, see Figure 2(B), connect the USB memory stick to the computer, see Figure 1(C) and 1(D).
5. Open the USB memory stick to show its files and folders, see Figure 5.
6. Double click to open the application, 'file.exe' (For example 'SW0013- 30v10- SettingsManagerIII.exe'), see Figure 5.
7. Click 'Read...', see Figure 6.
8. When 'Success. Done.' is displayed, click 'OK', see Figure 6.
9. Click the cross to the left of 'Panther_TX GeneralAdv', see Figure 7.
10. Double click to open 'CustomID', see Figure 7.
11. Change the default value '1002' to another value and click 'OK', see Figure 8.
12. Click 'Write...' and then 'OK', see Figure 9.
13. To reprogram additional transmitters, see Section '4.3'.
14. When all transmitters are programmed, select 'File > Exit' to close the program.
15. Disconnect the Programming device from the transmitter, put back the PCB or batteries, and put back and secure the cover on the back of the transmitter, see Figures 3 and 4.

The transmitter is now reprogrammed so that when the receiver for that transmitter is programmed, it will only start the fan when it receives a signal from that transmitter, or other transmitter that are programmed with the same 'customID'.

NOTE! Each transmitter that is to be used with receiver needs to be reprogrammed.

NOTE! If a receiver that has been previously programmed for a specific CustomID is to be used again for a new or different CustomID, the receiver must be reset and reprogrammed before programming the transmitter. See the section 'Reset the receiver' in the Instruction Manual for the Fan Start/Stop Device.

4.3 Reprogram additional transmitters

Follow the procedure below to reprogram additional transmitters using the Programming Kit D2-3:

1. Unscrew and remove cover from the back of a transmitter, see Figure 3(A):
 - Remove the PCB from standard transmitter, see Figure 3(B).
 - Remove batteries from hand held transmitter, see Figure 3(C).
2. Connect the programming device cable to the transmitter, see Figures 2(A) and 4.
3. Double click to open the application, 'file.exe' (For example 'SW0013- 30v10- SettingsManagerIII.exe'), see Figure 5.
4. Click 'Read...', see Figure 6.
5. When 'Success. Done.' is displayed, click 'OK', see Figure 6.
6. Click the cross to the left of 'Panther_TX GeneralAdv', see Figure 7.
7. Double click to open 'CustomID', see Figure 7.

8. Change the default value '1002' to another value and click 'OK', see Figure 8.
9. Click 'Write...' and then 'OK', see Figure 9.
10. To reprogram additional transmitters, return to step 1.
11. When all transmitters are programmed, select 'File > Exit' to close the program.
12. Disconnect the Programming device from the transmitter, put back the PCB or batteries, and put back and secure the cover on the back of the transmitter, see Figures 3 and 4.

5 Recycling

The product has been designed for component materials to be recycled. Its different material types must be handled according to relevant local regulations. Contact the distributor or Nederman if uncertainties arise when scrapping the product at the end of its service life.

6 Spare parts

Contact your nearest authorized distributor or Nederman for advice on technical service or if you require help with spare parts. See also www.nederman.com.

When ordering spare parts always state the following:

- Part number and control number (see the product identification nameplate).
- Detail number and name of the spare part (see www.nederman.com).
- Quantity of the parts required.

