

Lubrication Equipment

Nederman Monitoring System

(NMS)

Original instruction manual

EN INSTRUCTION MANUAL

Table of contents

1 Declaration of conformity.....	3
2 Preface.....	4
3 Description.....	4
4 Main components.....	4
4.1 Operator terminal.....	4
4.2 Supervisor management application.....	5
4.2.1 Configure SafeRecord.....	5
5 Use operator terminal.....	5
6 Use supervisor management application.....	6
6.1 Add new operator.....	6
6.2 Change operator data.....	6
6.3 Remove operator.....	7
6.4 Disable operators.....	7
6.5 Management tasks.....	8
6.5.1 Control tank fluid levels.....	8
6.5.2 View tank level alarms.....	8
6.5.3 Enable automatic printing of alarms.....	8
6.5.4 Register refilled tank fluid.....	9
6.6 Manage mini terminal from PC.....	9
6.6.1 Open order.....	9
6.6.2 Terminate order.....	10
7 Maintenance.....	10
7.1 Spare parts.....	10
8 Recycling.....	10

1 Declaration of conformity

We, AB Ph. Nederman & Co., declare under our sole responsibility that the Nederman product:
Nederman Monitoring System with accessories to which this declaration relates, are in conformity with the following:

Standards

EN 61 010-1:2001.

AB Ph. Nederman & Co.
P.O. Box 602
SE-251 06 Helsingborg
Sweden



Christian Norman
Technical Manager



2 Preface

Read this manual carefully before installation, use and service of this product. Replace the manual immediately if lost. Nederman reserves the right, without previous notice, to modify and improve its products including documentation.

This product is designed to meet the requirements of relevant EC directives. To maintain this status, all installation, maintenance and repair is to be done by qualified personnel using only original spare parts. Contact the nearest authorized distributor or Nederman for advice on technical service and obtaining spare parts. If there are any damaged or missing parts when the product is delivered, notify the carrier and the local Nederman representative immediately.

3 Description

Nederman Monitoring System (NMS) Saferecord is a computerised system for monitoring and registering different fluid media used in service installations such as for trucks and cars. The purpose of the system is partly to:

- Achieve smooth registration of the various media grades and quantities that are part of a specific service job, in order to easily generate documentation for debiting.
- Minimise waste that would otherwise occur in a service hall. This is achieved by each tap having a solenoid valve and a flow sensor that are controlled from the software in the computer.

4 Main components

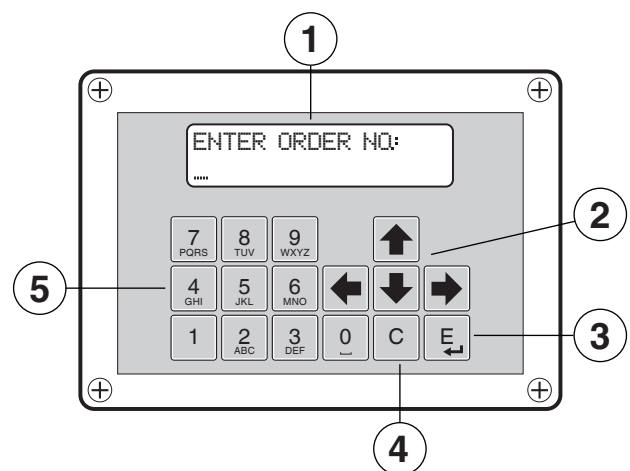
There are two main components to the NMS system:

- Operator terminal to manage work orders.
- Supervisor management application to manage tanks, terminals and operators.

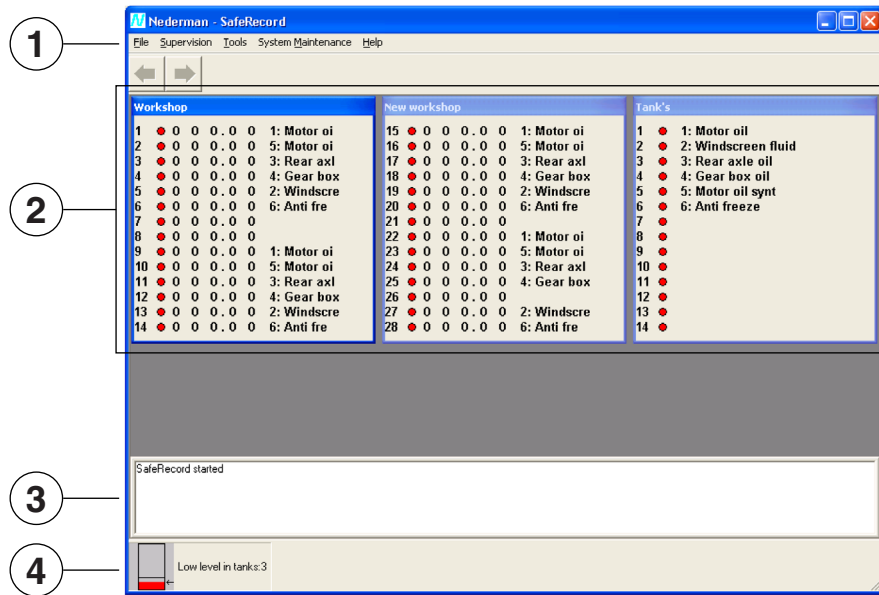
4.1 Operator terminal

1. Display
2. Cursor arrows: ◀▶ ▲▼
3. E: Enter
4. C: Close
5. Alphanumeric key pad: (0 - 9) (A - Z)
(Space key $_$)

Work orders are entered using the terminal's alphanumeric keypad. To enter a number press once. To enter a letter, press two to four times for the desired letter. To delete, press left arrow.



4.2 Supervisor management application



The supervisor management application consists of four main areas:

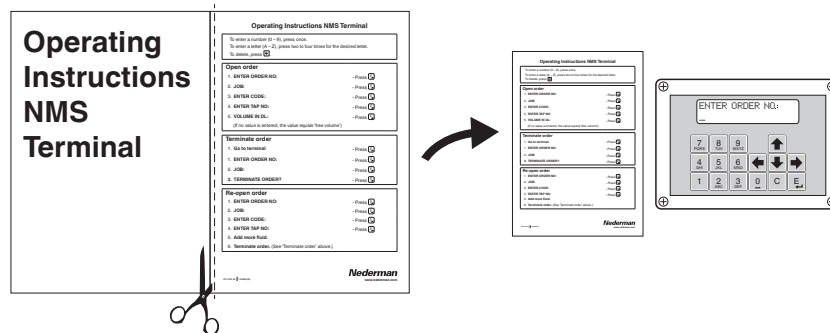
1. File menu
2. Main screen
3. Activity screen
4. Alarm screen

4.2.1 Configure SafeRecord

System Maintenance > Configuring... is used during the initial installation and configuration of NMS. If any change needs to be made to this menu, see the **Help** menu, and contact Nederman for assistance.

5 Use operator terminal

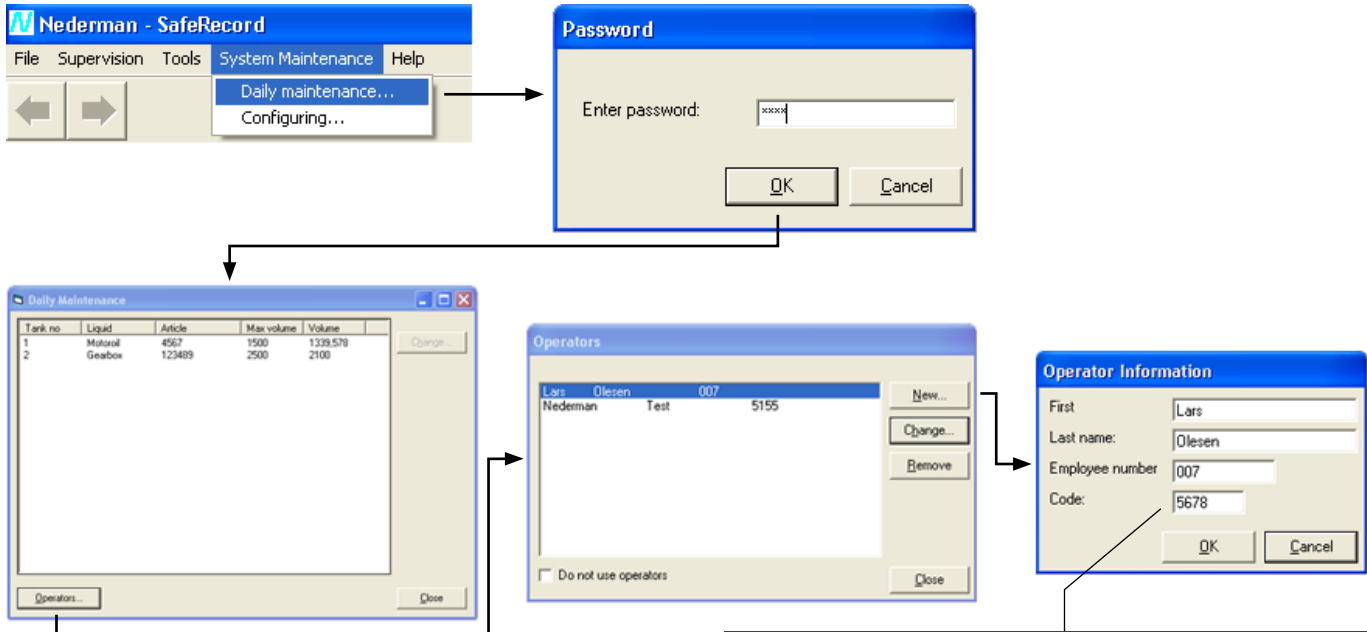
Cut out the desired language version of the ‘Operating Instructions’ included with NMS, and attach it near the terminal. Follow its instructions.



6 Use supervisor management application

NOTE! Operator data is not needed for tapping fluids.

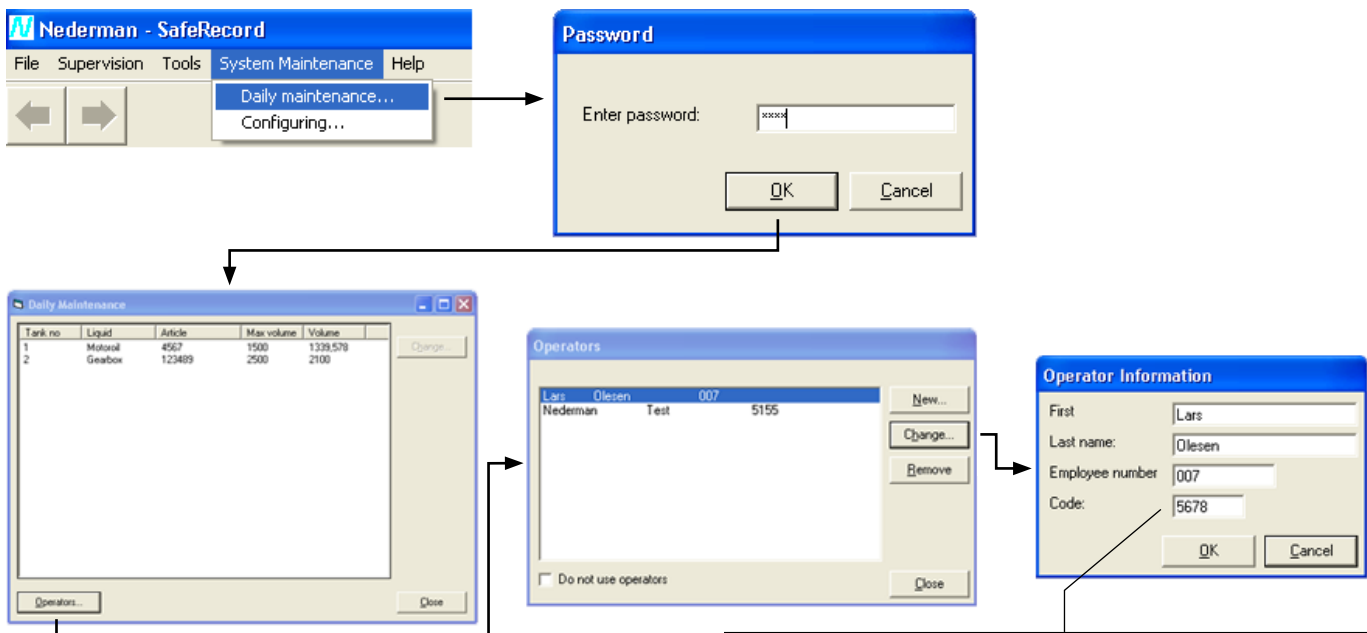
6.1 Add new operator



NOTE! The operator code cannot begin with a zero (0).

~~0256~~ 1256
~~⊗~~ ⊗ 1-9 ✓

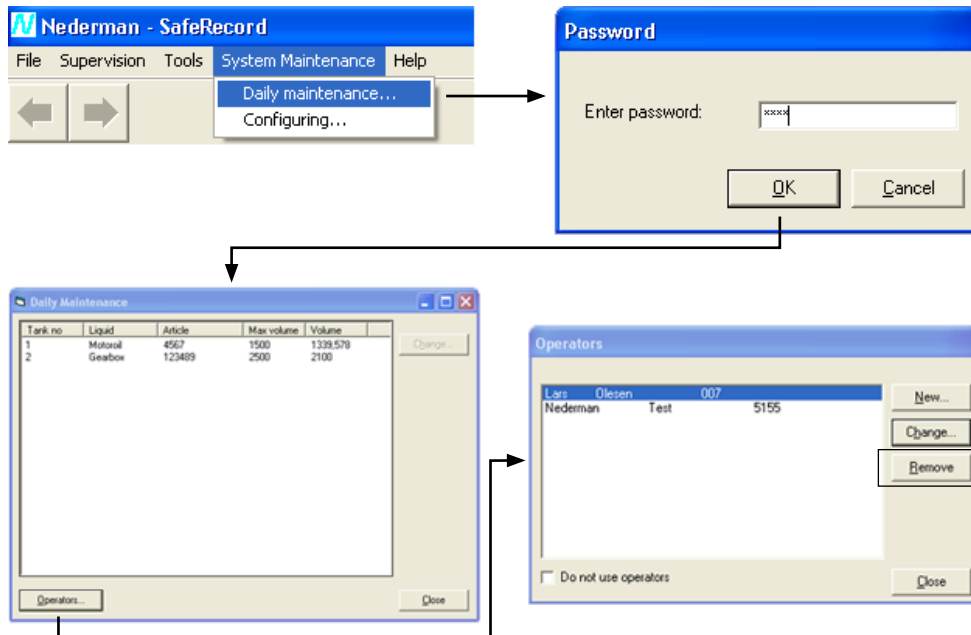
6.2 Change operator data



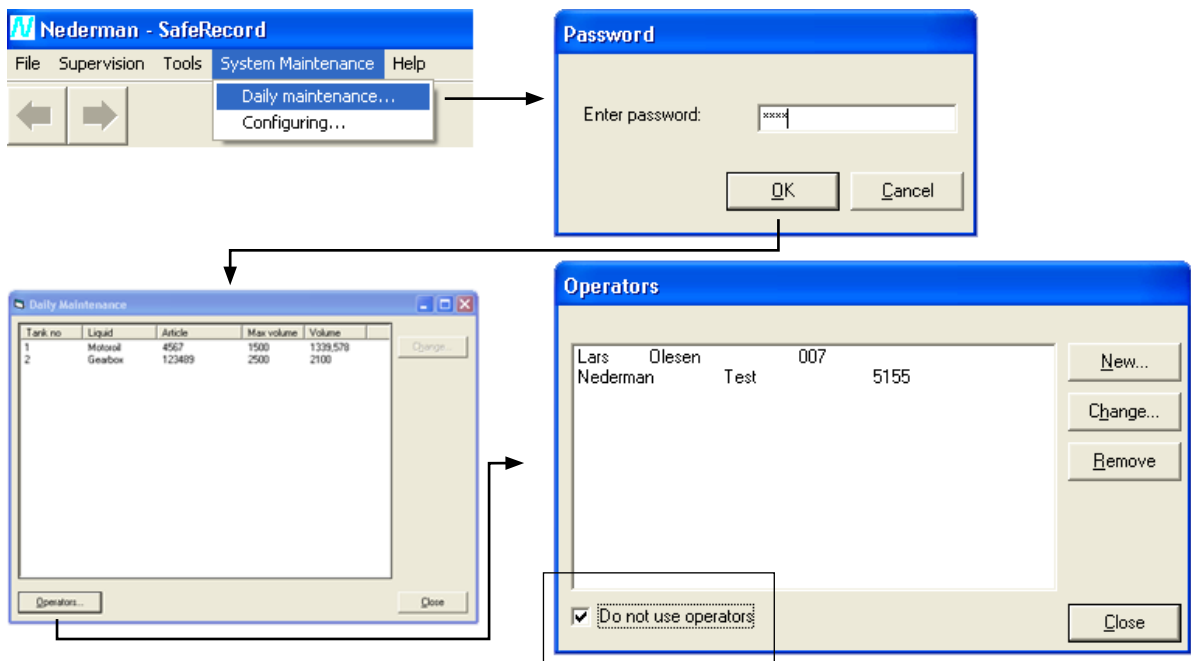
NOTE! The operator code cannot begin with a zero (0).

~~0256~~ 1256
~~⊗~~ ⊗ 1-9 ✓

6.3 Remove operator

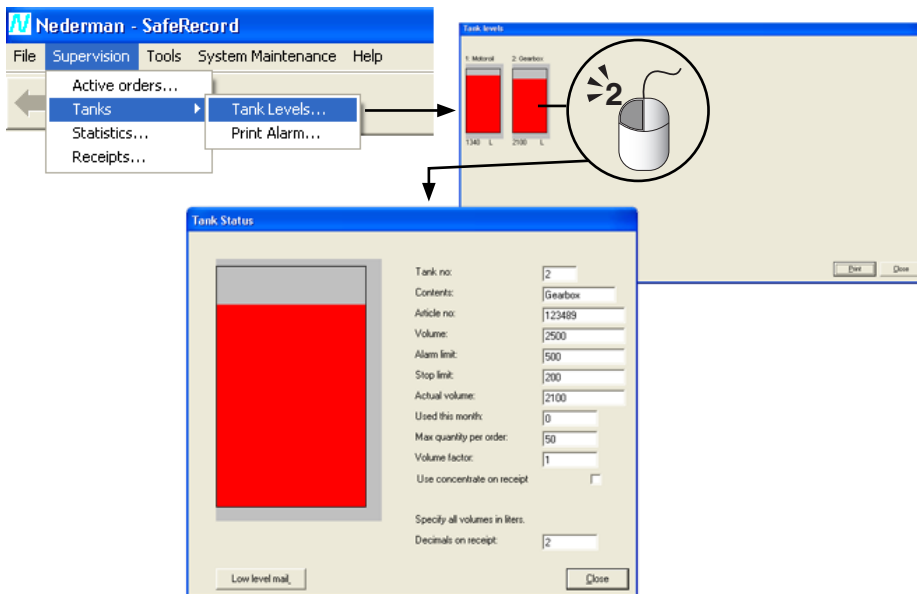


6.4 Disable operators

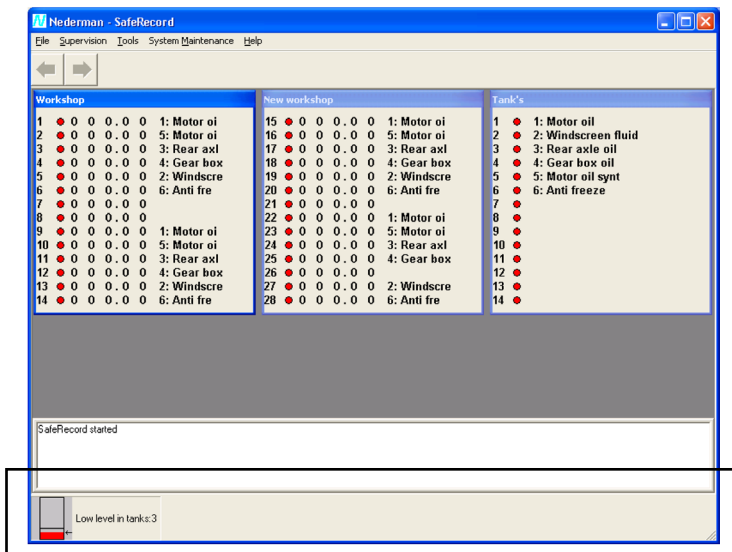


6.5 Management tasks

6.5.1 Control tank fluid levels

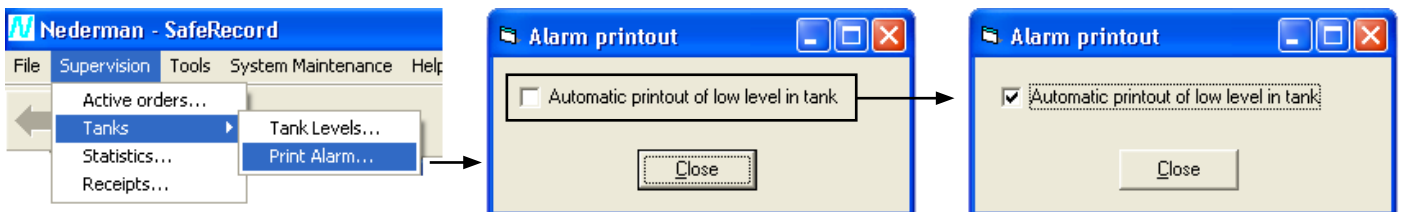


6.5.2 View tank level alarms

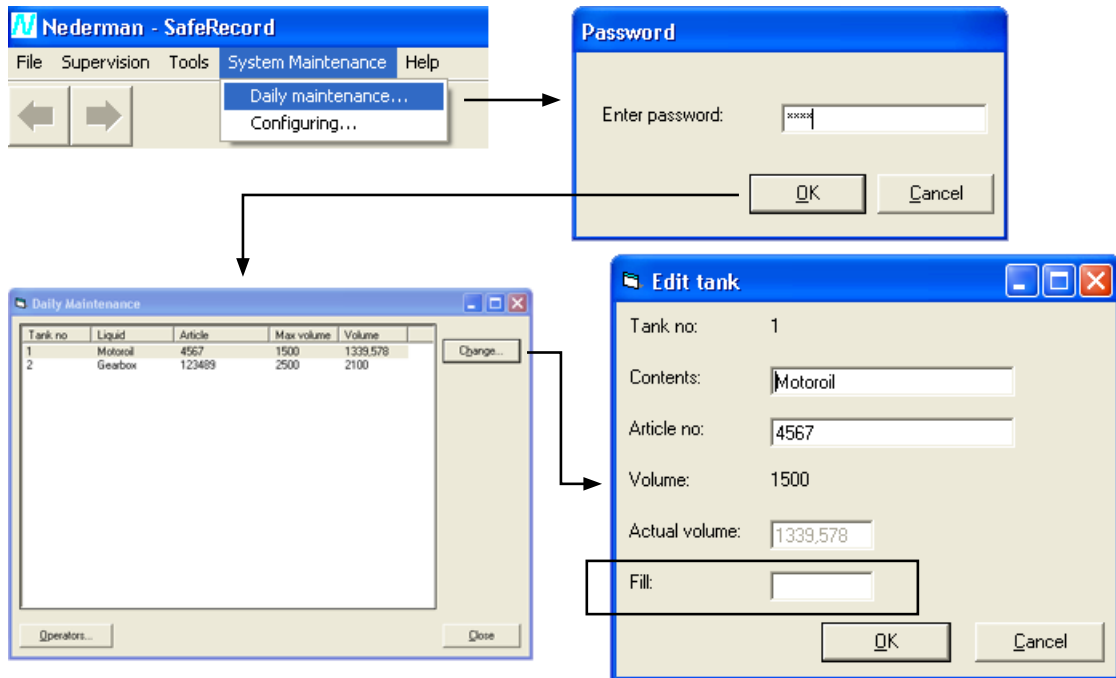


6.5.3 Enable automatic printing of alarms

NOTE! The printout is preset to the default printer of the computer.

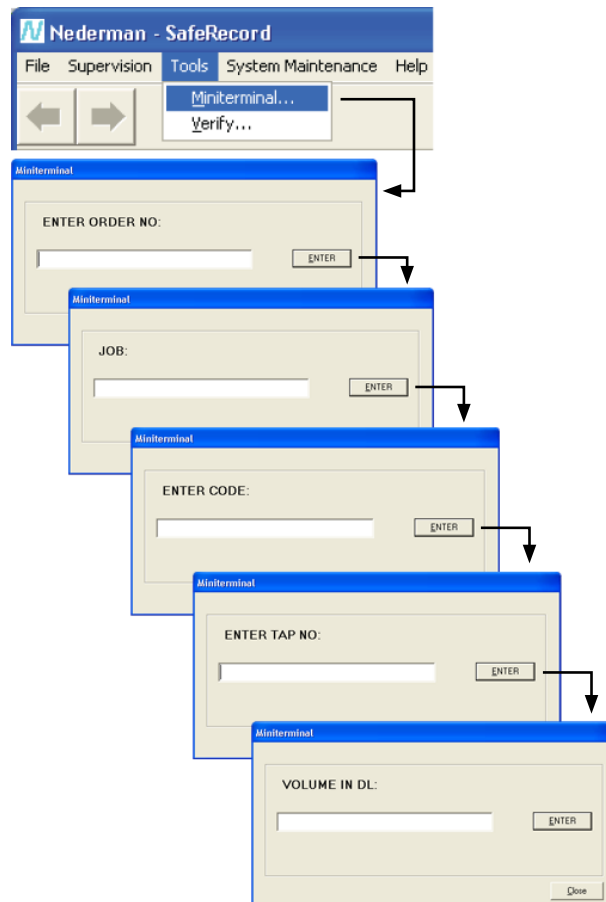


6.5.4 Register refilled tank fluid

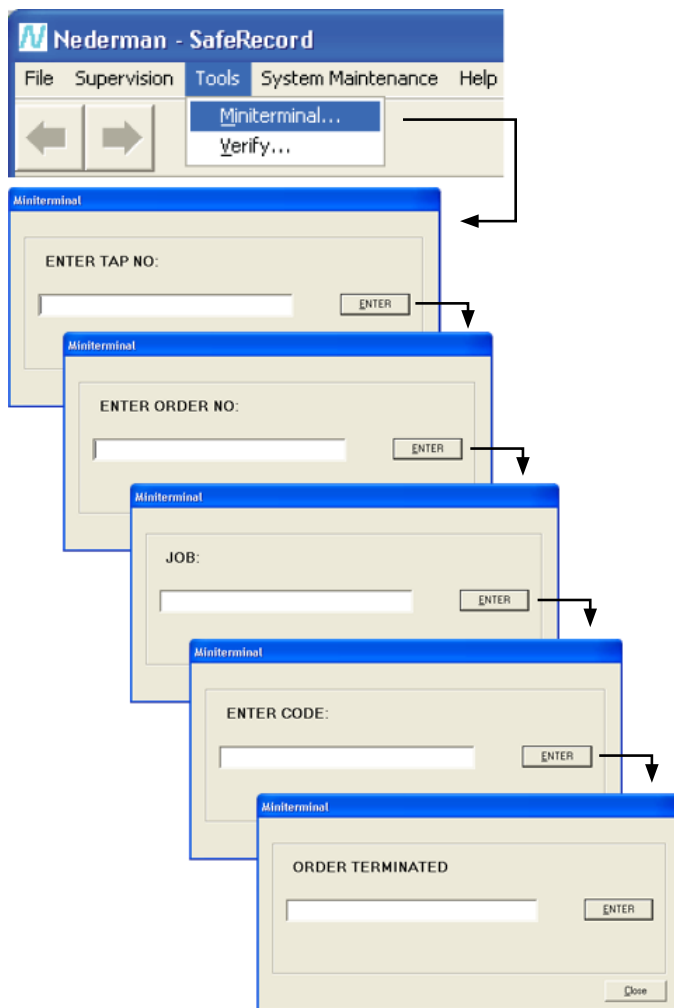


6.6 Manage mini terminal from PC

6.6.1 Open order



6.6.2 Terminate order



7 Maintenance

Installation, repair and maintenance work is to be carried out by qualified personnel using only original Nederman spare parts. Contact your nearest authorized distributor or Nederman for advice on technical service.

7.1 Spare parts

Contact your nearest authorized distributor or Nederman for advice on technical service or if you require help with spare parts. See also www.nederman.com.

When ordering spare parts always state the following:

- Part number and control number (see the product identification plate).
- Detail number and name of the spare part (see www.nederman.com).
- Quantity of the parts required.

8 Recycling

The product has been designed for component materials to be recycled. Its different material types must be handled according to relevant local regulations. Contact the distributor or Nederman if uncertainties arise when scrapping the product at the end of its service life.

