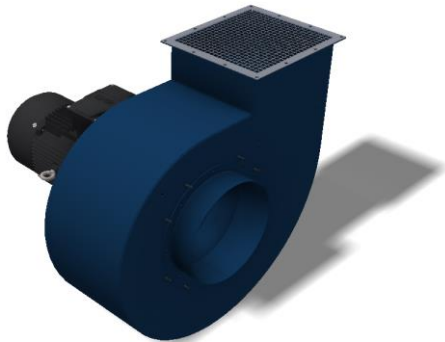


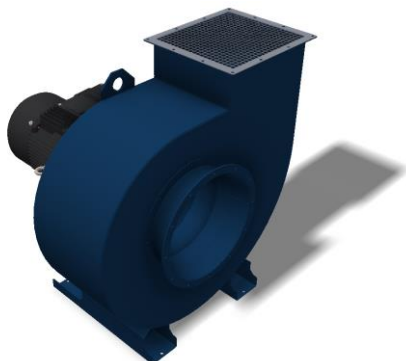
NF Fan



NF fan - assembly for a filter



NF WS fan - free standing



NF is a series of industrial radial fans. Their main application is in extraction systems used in stationary dust collectors produced by NEDERMAN. Usually the NF Radial fan is used for handling clean air, sucking the air through the filter elements of a dust collector.

Fans NF should not be used for gases containing aggressive substances or toxic.

The fans are only available in RD version.

WS version of the fan provided with feet welded to the housing mantle is intended for other applications.

Technical parameters

- Fans with motors of power rating in the range from 0.75 kW up to 18.5 kW.
- Temperature of gas flowing $-20 \div +80$ °C
- Ambient temperature $-20 \div +40$ °C
- Air flow range $500 \div 14\,000$ m³/h.
- Maximum positive pressure 4500 Pa.
- Maximum material quantity [g/m³] –
< 5
- Maximum grain size soft material [mm] –
< 2×2×2

The main design components are made of metal sheets and steel profiles of standard quality, painted in the standard painting system in the color RAL 5009.

NF fans are also available with frequency of 60 Hz.

Dimensions and weights

Table 1. Dimensions and weights of fans NF (WS) type

NF fan Item number	NF WS fan Item number	Fan motor power [kW]	Dimension A* [mm]	Figure number	Diagram working on the figure number	Weight [kg]	Noise level dB(A) ^{***}	
							with silencer	without silencer
7992940	73001170	0,75	409	4	1	43	68	82
73004815	73001171	1,1	443	4	1	45	68	82
73004816	73001172	2,2	501	4	1	51	75	83
73004817	73001173	3	522	4	1	56	77	85
73004818	73001174	4	634	5	2	78	77	85
7992942	73001175	5,5	671	5	2	92	79	85
7992943	73000007	7,5 (S)**	671	5	2	97	81	85
73004819	73000008	7,5 (L)**	835	6	3	147	82	85
73004820	73000009	11	940	6	3	179	84	87
73004821	73000010	15	940	6	3	192	84	90
73004822	73000012	18,5	940	6	3	210	85	94

* - dimension dependent on power / the engine type. See Figures 4, 5 and 6

** - two quantities of the fan with an engine power 7,5 kW

*** - Measuring surface sound pressure level in 1 m distance for an open outlet or silencer at the outlet [dB(A)]. Applies to all fans with a frequency of 50 Hz.

Figure 1. Air flow range for 0.75 to 3.0 kW

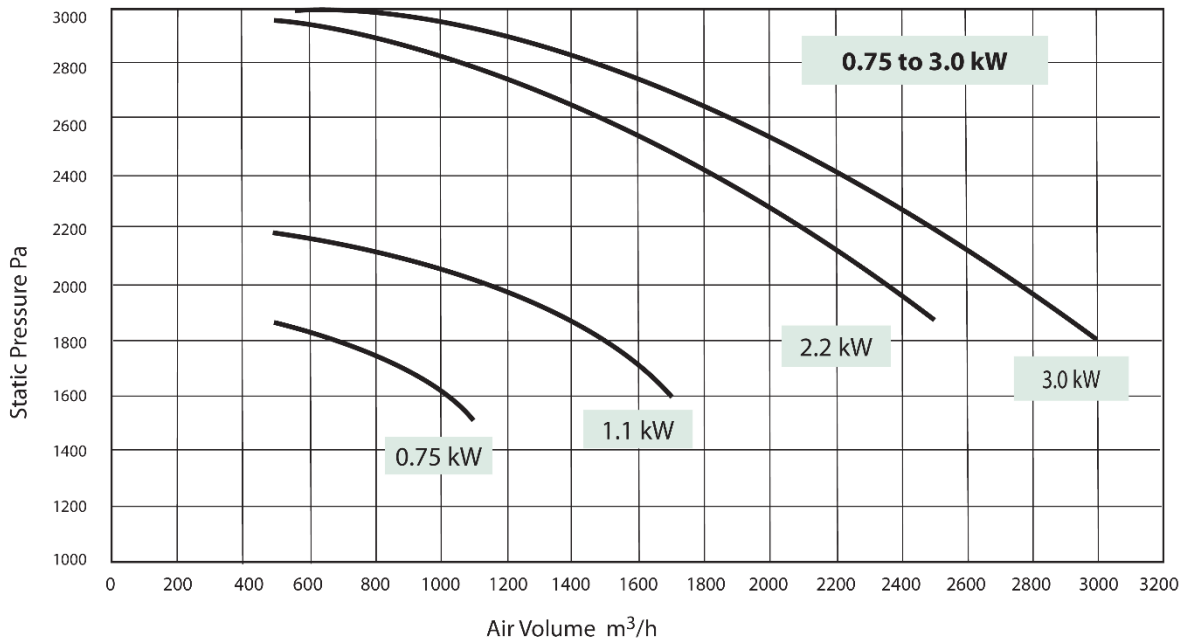


Figure 2. Air flow range for 4.0 to 7.5 S kW

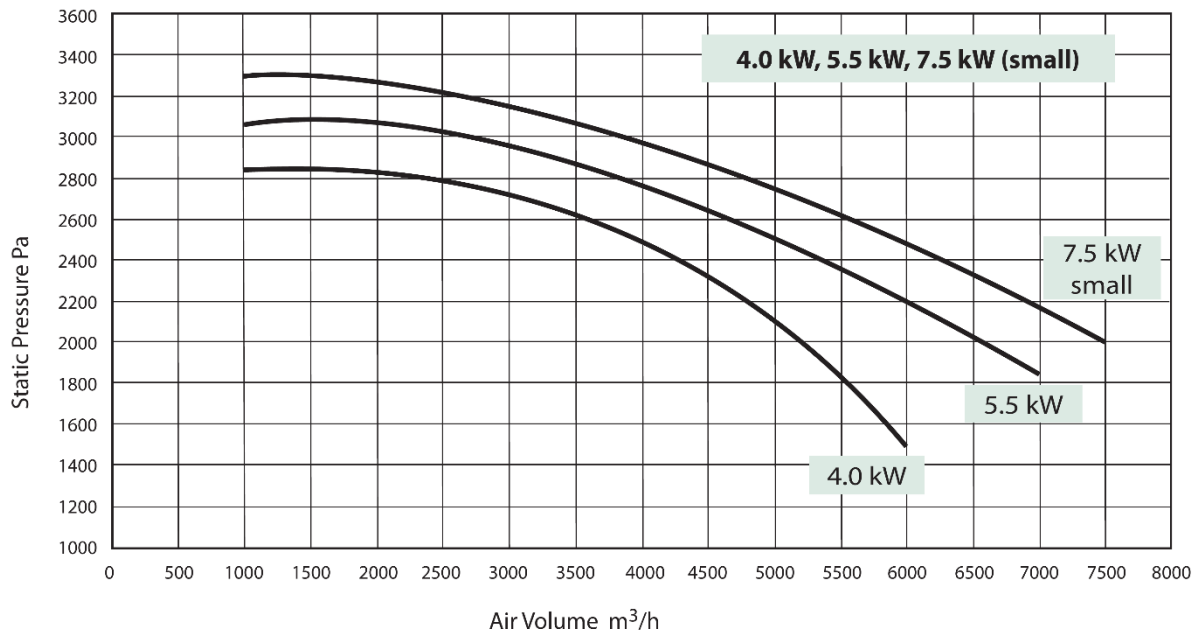


Figure 3. Air flow range for 7.5 L to 18,5 kW

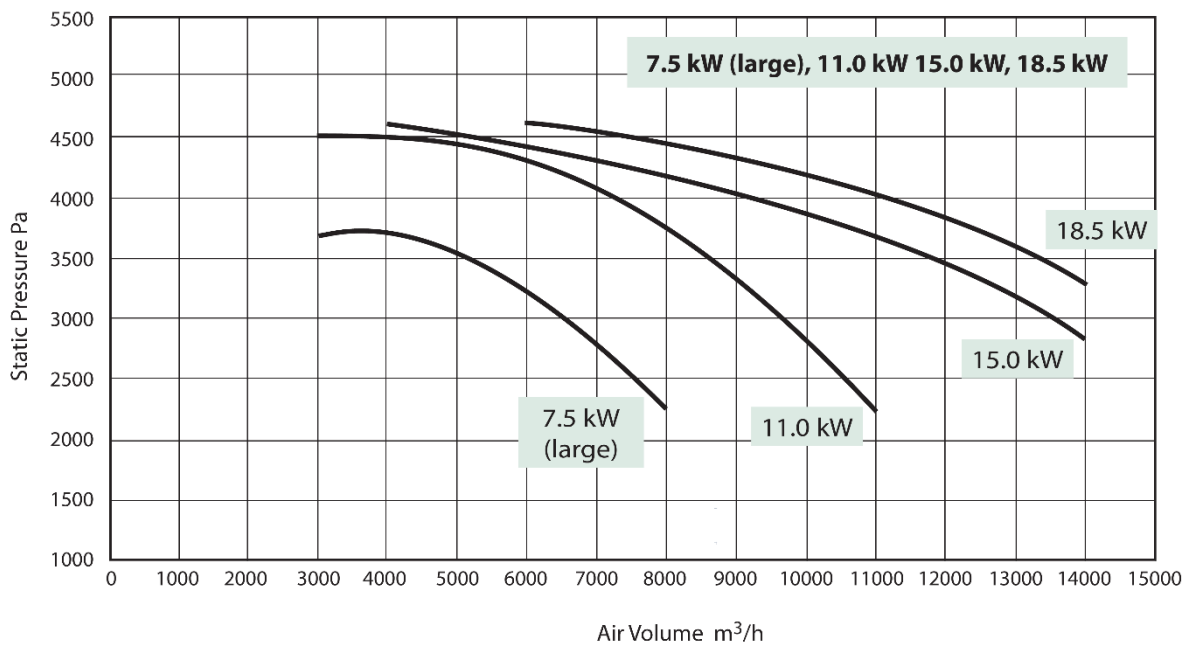


Figure 4. NF WS fan 0,75 – 3 kW

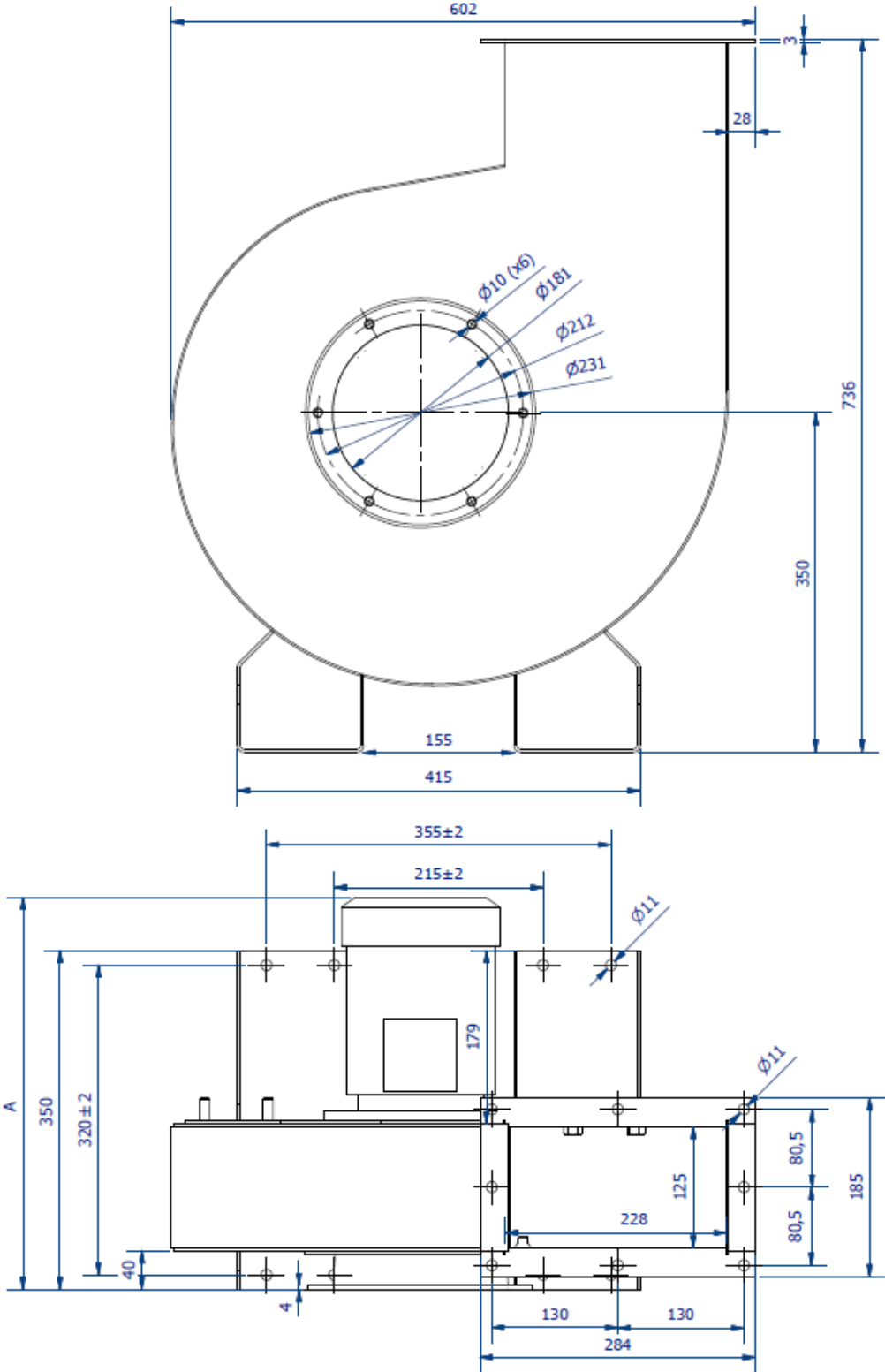
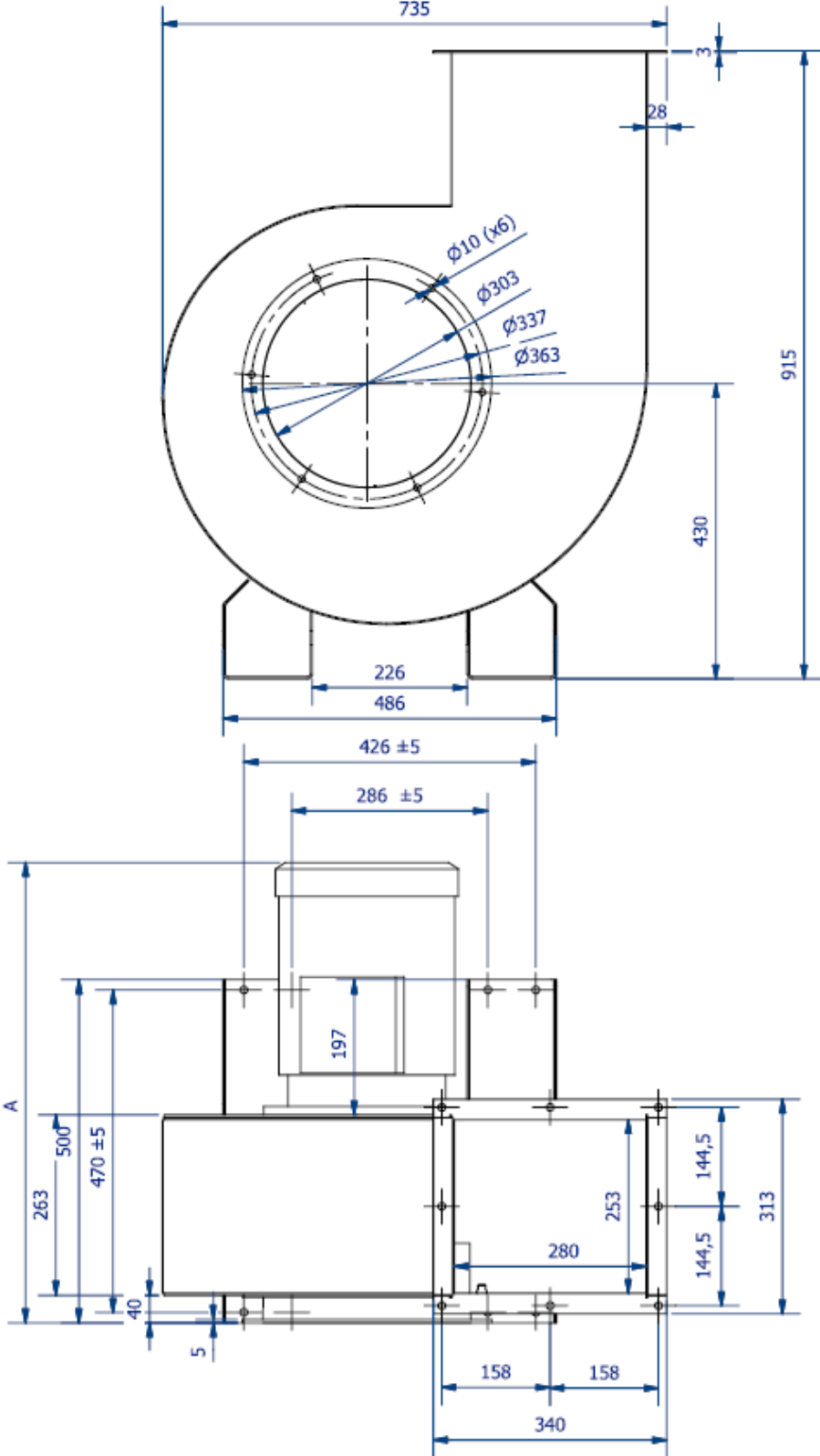


Figure 5. NF WS fan 4 – 7,5 S kW



Accessories

NF Radial fan may be optionally equipped with:

1. Fan silencer (fig. 7 pos. 1) decreases emission of noise down.
2. Throttle valve (butterfly type) mounted inside the silencer, with adjusting leverage system fitted.
3. Weather cover (fig. 7 pos. 2).
4. Spark-proof version.
5. Inlet and outlet transition for NF WS (table 2 and table 3).

Figure 7. Fan silencer and weather cover

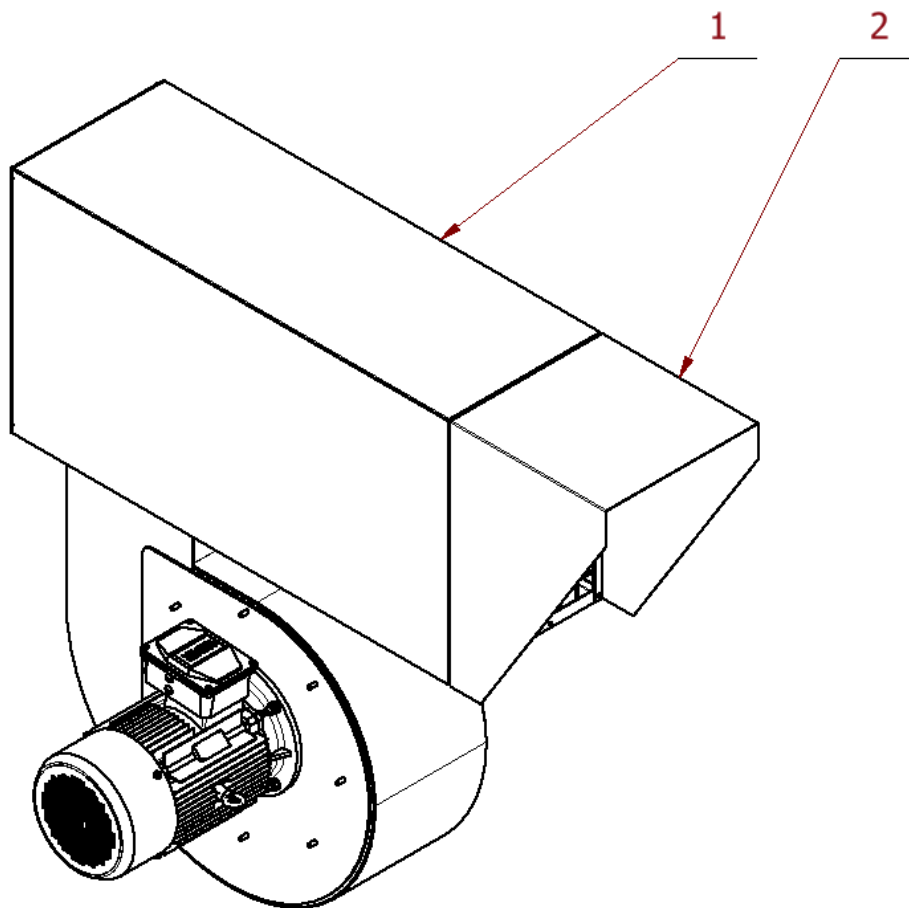


Table 2. Inlets for NF WS fan.

Item number	Item name	Drawing number	Remark
73008193	Inlet galv. for fan dia180/QF100	22020_100_180	For NF fan 0,75kW – 3,0kW
73008194	Inlet galv. for fan dia180/QF125	22020_125_180	For NF fan 0,75kW – 3,0kW
73007705	Inlet galv. for fan dia180/QF160	22020_160_180	For NF fan 0,75kW – 3,0kW
73003331	Inlet galv. for fan dia180/QF180	22020_180_180	For NF fan 0,75kW – 3,0kW
73007706	Inlet galv. for fan dia180/QF200	22020_200_180	For NF fan 0,75kW – 3,0kW
73008195	Inlet galv. for fan dia300/QF224	22020_224_300	For NF fan 4,0kW – 7,5(S)kW
73008196	Inlet galv. for fan dia300/QF250	22020_250_300	For NF fan 4,0kW – 7,5(S)kW
73008197	Inlet galv. for fan dia300/QF315	22020_315_300	For NF fan 4,0kW – 7,5(S)kW
73008198	Inlet galv. for fan dia300/QF350	22020_350_300	For NF fan 4,0kW – 7,5(S)kW
73008199	Inlet galv. for fan dia300/QF400	22020_400_300	For NF fan 4,0kW – 7,5(S)kW
73003348	Inlet galv. for fan dia400/QF315	22020_315_400	For NF fan 7,5(L)kW – 18,5kW
73003352	Inlet galv. for fan dia400/QF350	22020_350_400	For NF fan 7,5(L)kW – 18,5kW
73003356	Inlet galv. for fan dia400/QF400	22020_400_400	For NF fan 7,5(L)kW – 18,5kW
73003359	Inlet galv. for fan dia400/QF450	22020_450_400	For NF fan 7,5(L)kW – 18,5kW
73003363	Inlet galv. for fan dia400/QF500	22020_500_400	For NF fan 7,5(L)kW – 18,5kW
73007149	Inlet galv. for fan dia400/QF560	22020_560_400	For NF fan 7,5(L)kW – 18,5kW
73008200	Inlet galv. for fan dia400/QF630	22020_630_400	For NF fan 7,5(L)kW – 18,5kW

Table 3. Outlet transition for NF WS fan.

Item number	Item name	Drawing number
73008201	Outlet transition for NF WS fan 0,75-3,0 kW / QF100 galv.	22021_100_007_030
73008202	Outlet transition for NF WS fan 0,75-3,0 kW / QF125 galv.	22021_125_007_030
73008203	Outlet transition for NF WS fan 0,75-3,0 kW / QF160 galv.	22021_160_007_030
73008204	Outlet transition for NF WS fan 0,75-3,0 kW / QF180 galv.	22021_180_007_030
73008205	Outlet transition for NF WS fan 0,75-3,0 kW / QF200 galv.	22021_200_007_030
73008206	Outlet transition for NF WS fan 4,0-7,5S kW / QF224 galv.	22021_224_040_075S
73008207	Outlet transition for NF WS fan 4,0-7,5S kW / QF250 galv.	22021_250_040_075S
73008208	Outlet transition for NF WS fan 4,0-7,5S kW / QF315 galv.	22021_315_040_075S
73008209	Outlet transition for NF WS fan 4,0-7,5S kW / QF350 galv.	22021_350_040_075S
73008210	Outlet transition for NF WS fan 4,0-7,5S kW / QF400 galv.	22021_400_040_075S
73008211	Outlet transition for NF WS fan 7,5L-18,5 kW / QF315 galv.	22021_315_075L_185
73008212	Outlet transition for NF WS fan 7,5L-18,5 kW / QF350 galv.	22021_350_075L_185
73008213	Outlet transition for NF WS fan 7,5L-18,5 kW / QF400 galv.	22021_400_075L_185
73008214	Outlet transition for NF WS fan 7,5L-18,5 kW / QF450 galv.	22021_450_075L_185
73008215	Outlet transition for NF WS fan 7,5L-18,5 kW / QF500 galv.	22021_500_075L_185
73008216	Outlet transition for NF WS fan 7,5L-18,5 kW / QF560 galv.	22021_560_075L_185
73008217	Outlet transition for NF WS fan 7,5L-18,5 kW / QF630 galv.	22021_630_075L_185